

**DELAVAN LAKE SANITARY DISTRICT
ADMINISTRATOR'S REPORT
NOVEMBER ACTIVITY 2021**

ADMINISTRATION

View Crest Sewer manhole repairs are finished.

Crews rented a backhoe to start repairing manholes on the South Shore project prior to asphalt going down.

Water Clarity still doing well over 9 feet.

Lake Harvesting operations are complete and equipment going thru major maintenance and winterizing.

New Vac truck arrived and getting put in operation.

Lift Station #4 second phase plans are submitted for final review by staff and cooperative agreement with Ravenswood in progress to make some changes to prevent station flooding issues.

Sewer crews doing preventative maintenance for winter to protect lift stations.

Negotiations with The City of Delavan in progress for Lift Station #11 serving Lake Lawn to determine if it can serve further development in that area.

WalCoMet is in a design stage to install a 24-inch force main and leave the shared force main owned by DLSD.

SEWER SYSTEM OPERATIONS

Building Sewer Connections

New Connections for the Month - 0

Reconnections for the Month - 2

Disconnections for the Month - 2

Total Number of Structures Connected to Date - 3,111

Total ERU Count for the Month - 4,033

Operation and Maintenance

Average November Daily Wastewater Flow to WalCoMet - 416,724 gallons

Peak November Flow - 461,402 gallons

Diggers Requests Marked for the Month - 81

Emergency Call Outs - 2

Lateral Leaks

Sump Pump Discharges - 4
Current Lateral Leaks - 51
Completed Lateral Leak Orders – 3

The following charts are attached: *Wastewater Flow comparison with Precipitation for November, 2021*
Average Daily Wastewater Flow comparison with Peak Flow
Precipitation comparison with “normal”
Wastewater Flow comparison with “normal”
Environmental Data Summary
Daily Lake Elevation for November, 2021
Lake Elevation comparison with “normal”

Lake Monitoring/Lake Level

Precipitation Total for the Month – 0.46 inches
Below Normal – 1.78 inches
Ice On Date – January 21, 2021
Ice Off Date – March 18, 2021
Secchi Disc Reading Main Lake – 13.0 feet on 11/10/2021

See attached Lake Elevation Graph and Chart.

Lake Information

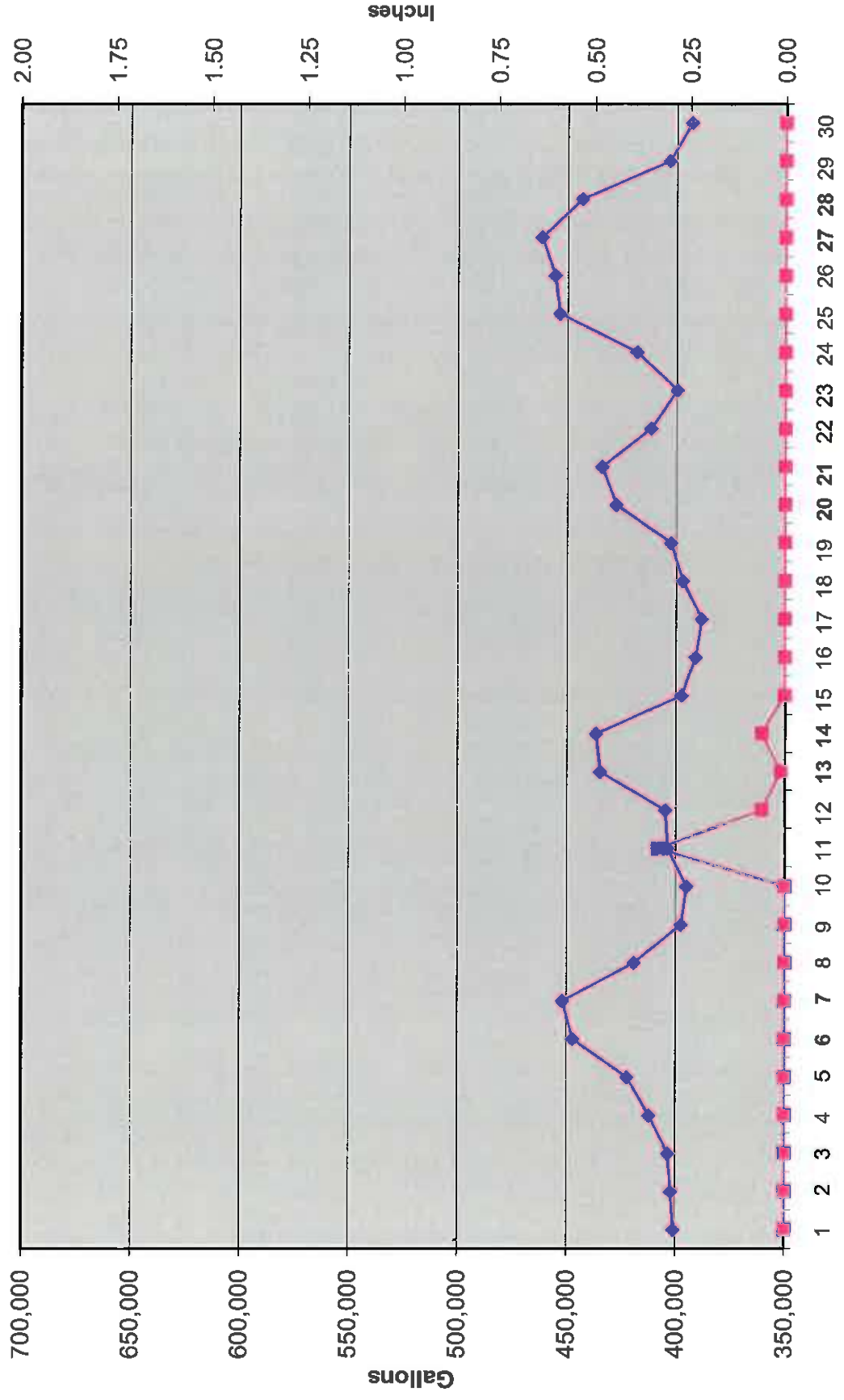
DNR Lake Level Goal – 927.86 feet
Average Lake Elevation – 927.57 feet

Lake Committee

The next meeting of the Lake Committee is scheduled for 7:00 P.M. on Wednesday, January 5, 2022 at the Town Hall.

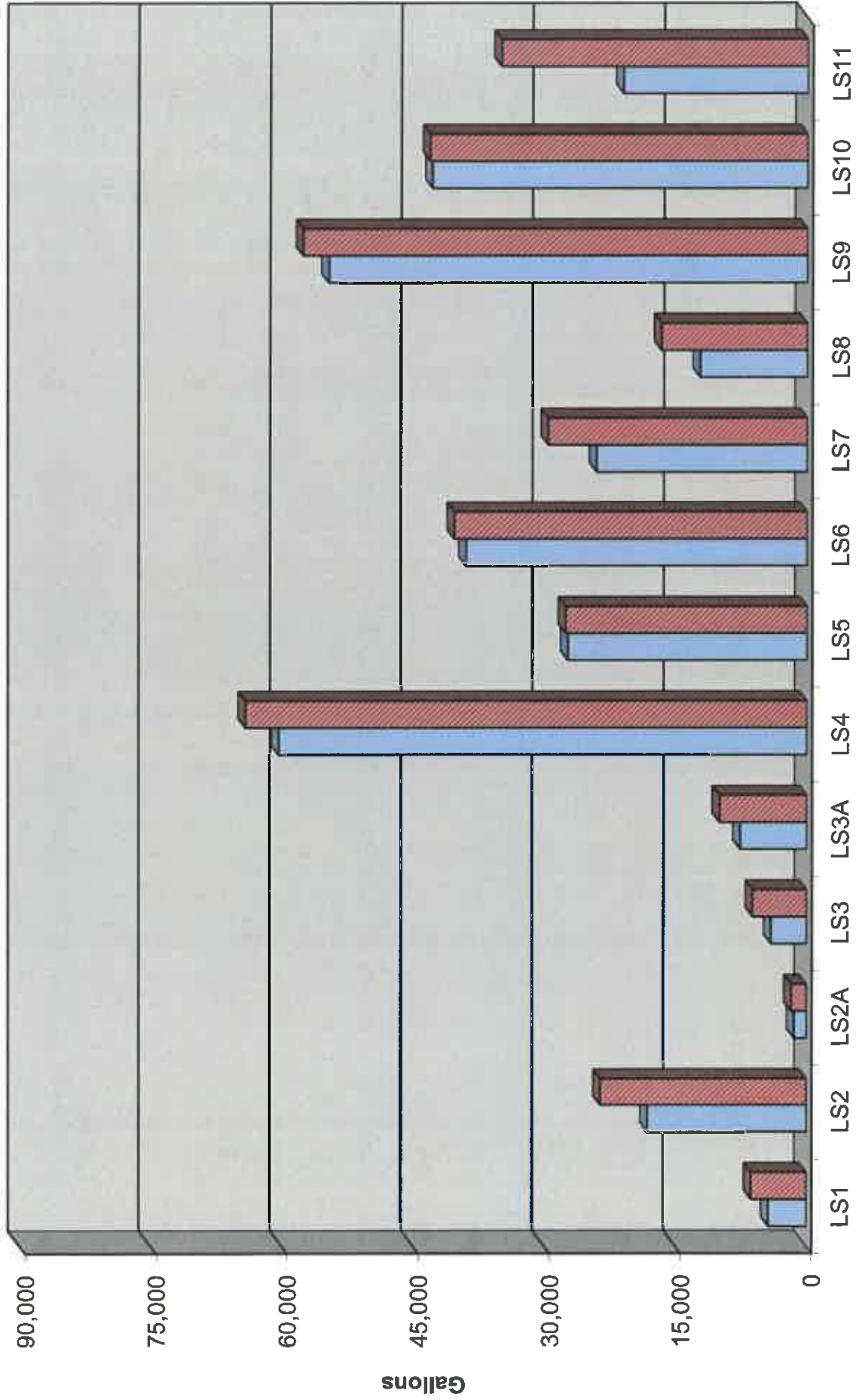
Attachments

Wastewater Flow/Precipitation - November, 2021

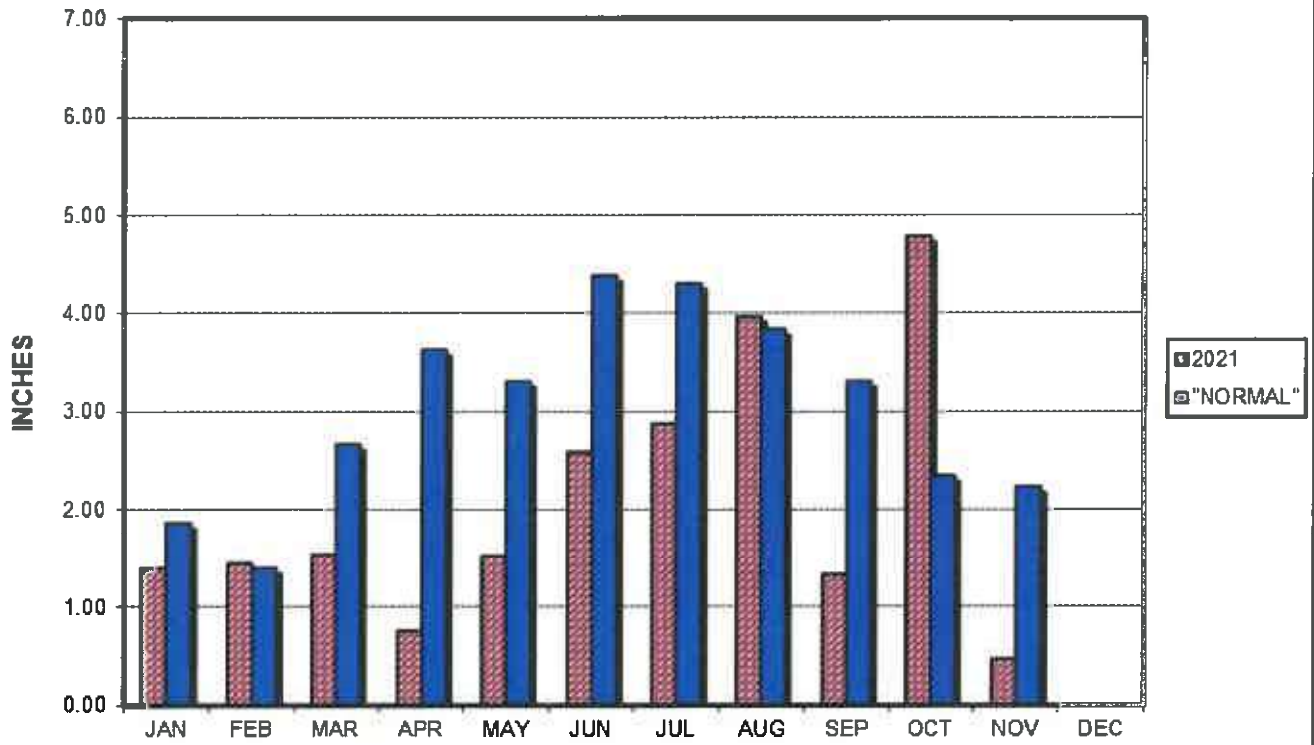


Average Daily Flow/Peak Flow by Area - November, 2021

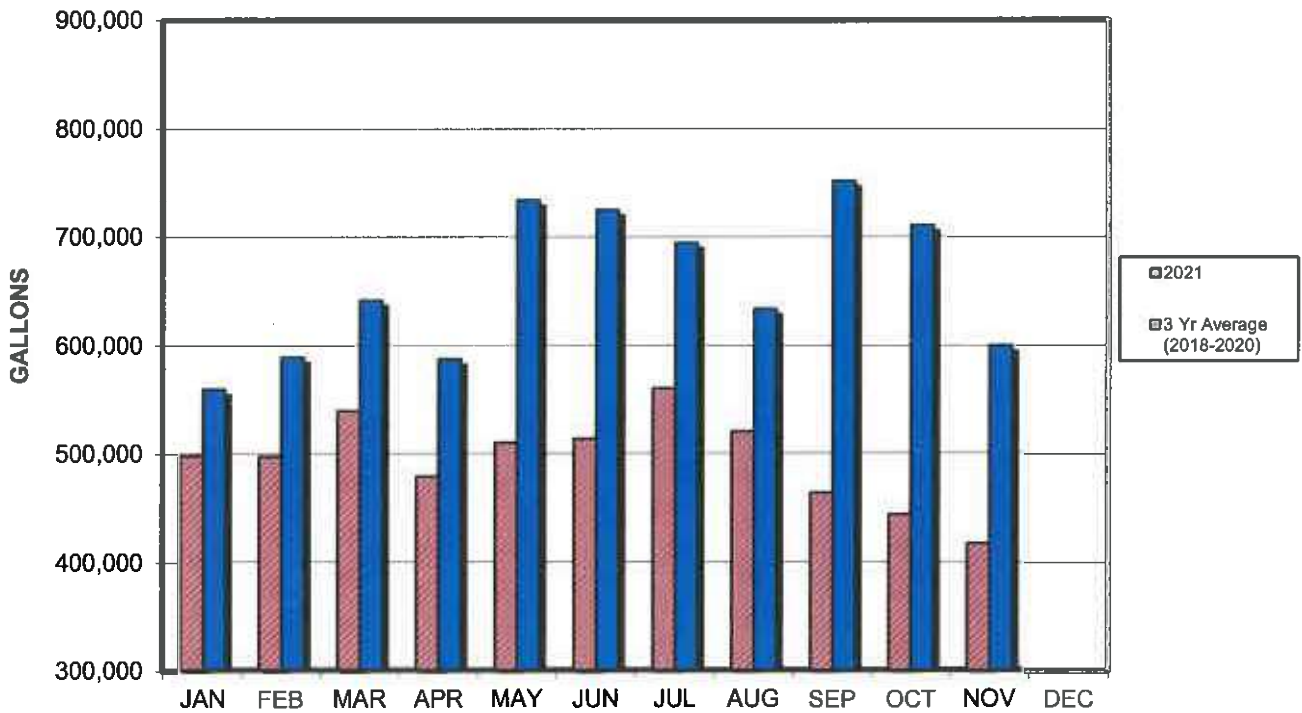
□ Average ■ Peak



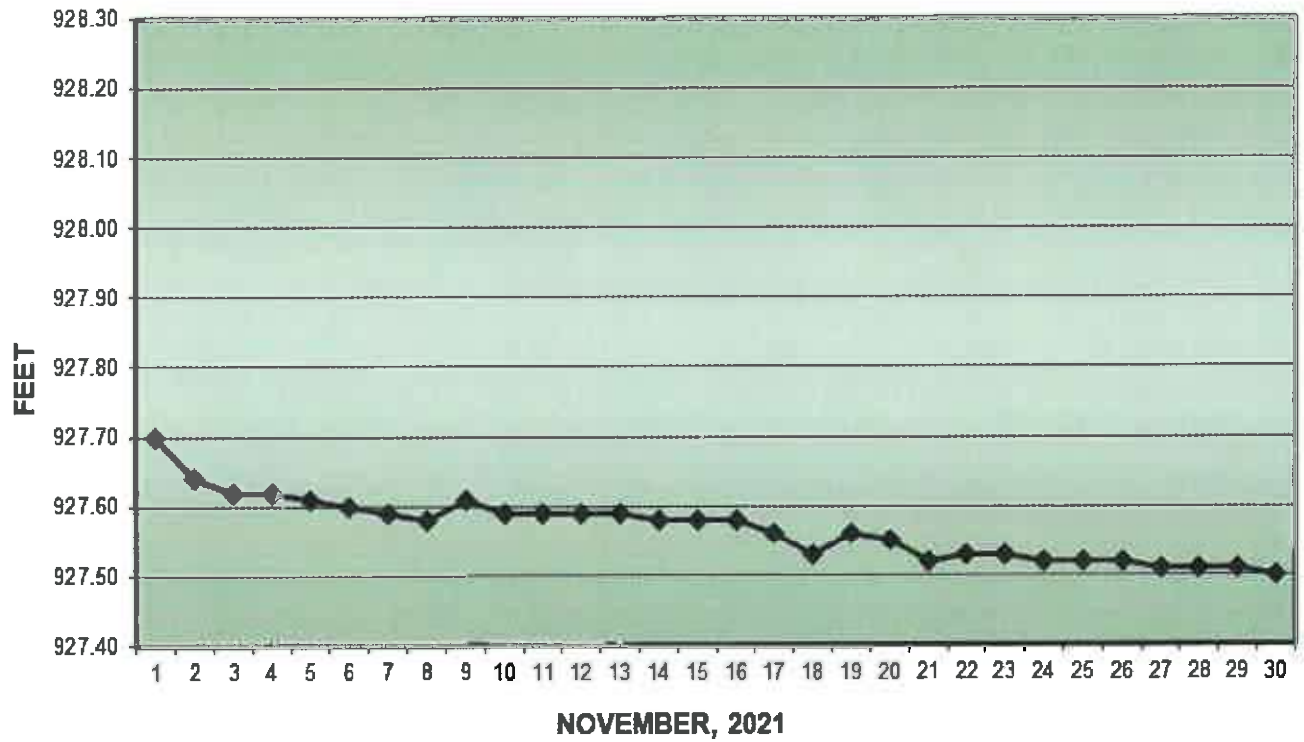
PRECIPITATION - DELAVAN LAKE, WI



AVERAGE WASTEWATER FLOWS



LAKE ELEVATION - DELAVAN LAKE, WI



AVERAGE LAKE ELEVATION - DELAVAN LAKE, WI

