

**DELAVAN LAKE SANITARY DISTRICT
ADMINISTRATOR'S REPORT
AUGUST ACTIVITY 2023**

ADMINISTRATION

Manholes adjusted by crew on HWY O.

Slowly losing summer help and removing harvesters from lake has begun.

Borg Rd easement with WalCoMet is complete and access path to metering station in progress.

WalCoMet will be lining a sewer on Borg Road.

Dry weather is a challenge to keeping lake levels up, however infiltration of clearwater into the sewer system has reduced sewer flows and is reflected in the monthly billing from WalCoMet.

Engineer is finalizing reviews of Shores of Delavan development.

Budget cycle is kicking in for 2024.

SEWER SYSTEM OPERATIONS

Building Sewer Connections

New Connections for the Month - 0

Reconnections for the Month - 0

Disconnections for the Month - 1

Total Number of Structures Connected to Date - 3,123

Total ERU Count for the Month - 4,046

Operation and Maintenance

Average August Daily Wastewater Flow to WalCoMet - 489,927 gallons

Peak August Flow - 565,044 gallons

Diggers Requests Marked for the Month - 111

Emergency Call Outs - 2

Lateral Leaks

Sump Pump Discharges - 4

Current Lateral Leaks - 51

Completed Lateral Leak Orders - 5

The following charts are attached: *Wastewater Flow comparison with Precipitation August, 2023*
Average Daily Wastewater Flow comparison with Peak Flow
Precipitation comparison with "normal"
Wastewater Flow comparison with "normal"
Environmental Data Summary
Daily Lake Elevation for August, 2023
Lake Elevation comparison with "normal"

Lake Monitoring/Lake Level

Precipitation Total for the Month – 1.88 inches
Below Normal – 1.96 inches
Ice On Date – December 19, 2022
Ice Off Date – March 10, 2023
Secchi Disc Reading Main Lake – 7.5 feet 8/28/2023

See attached Lake Elevation Graph and Chart.

Lake Information

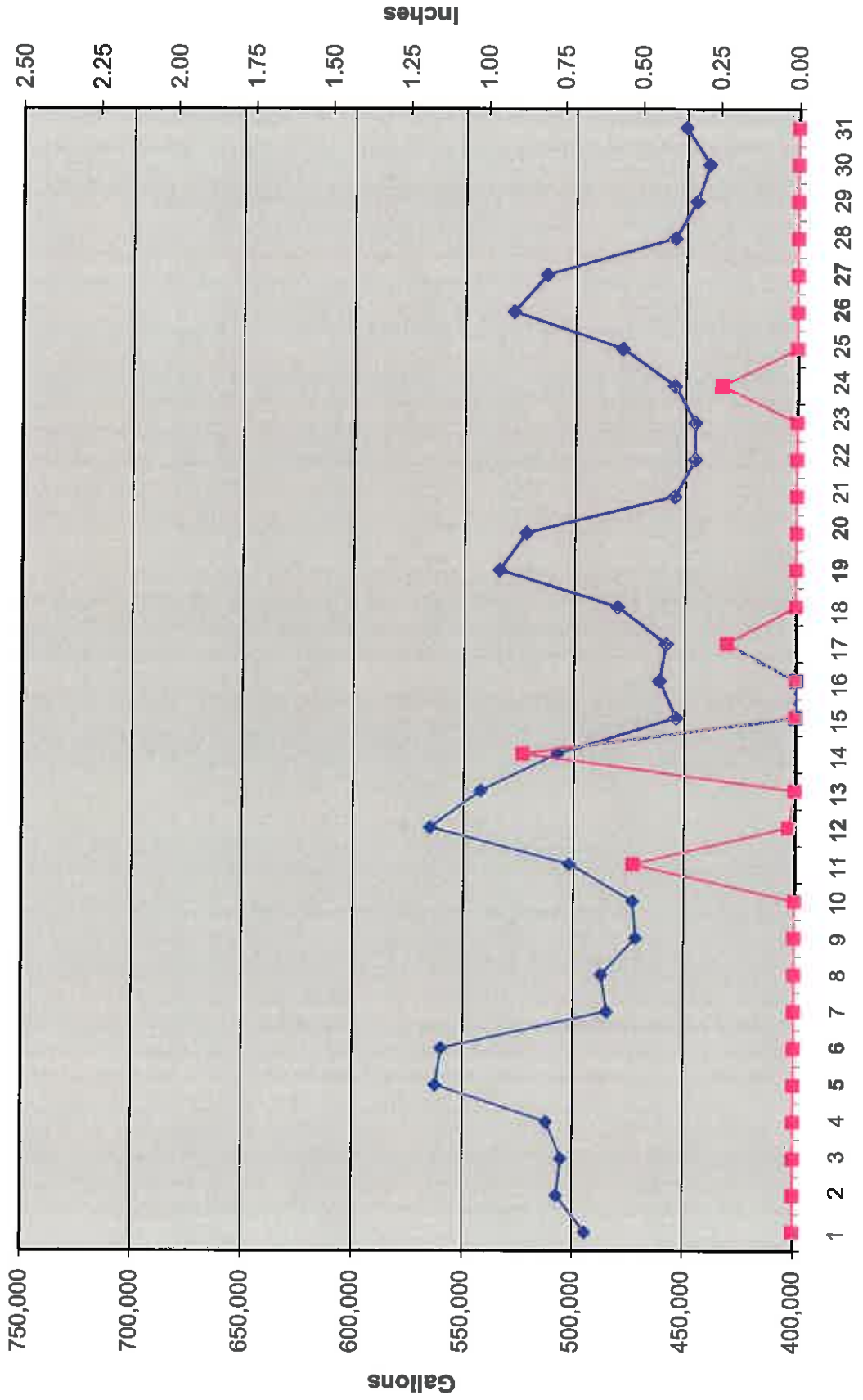
DNR Lake Level Goal – 927.86 feet
Average Lake Elevation – 927.83 feet

Lake Committee

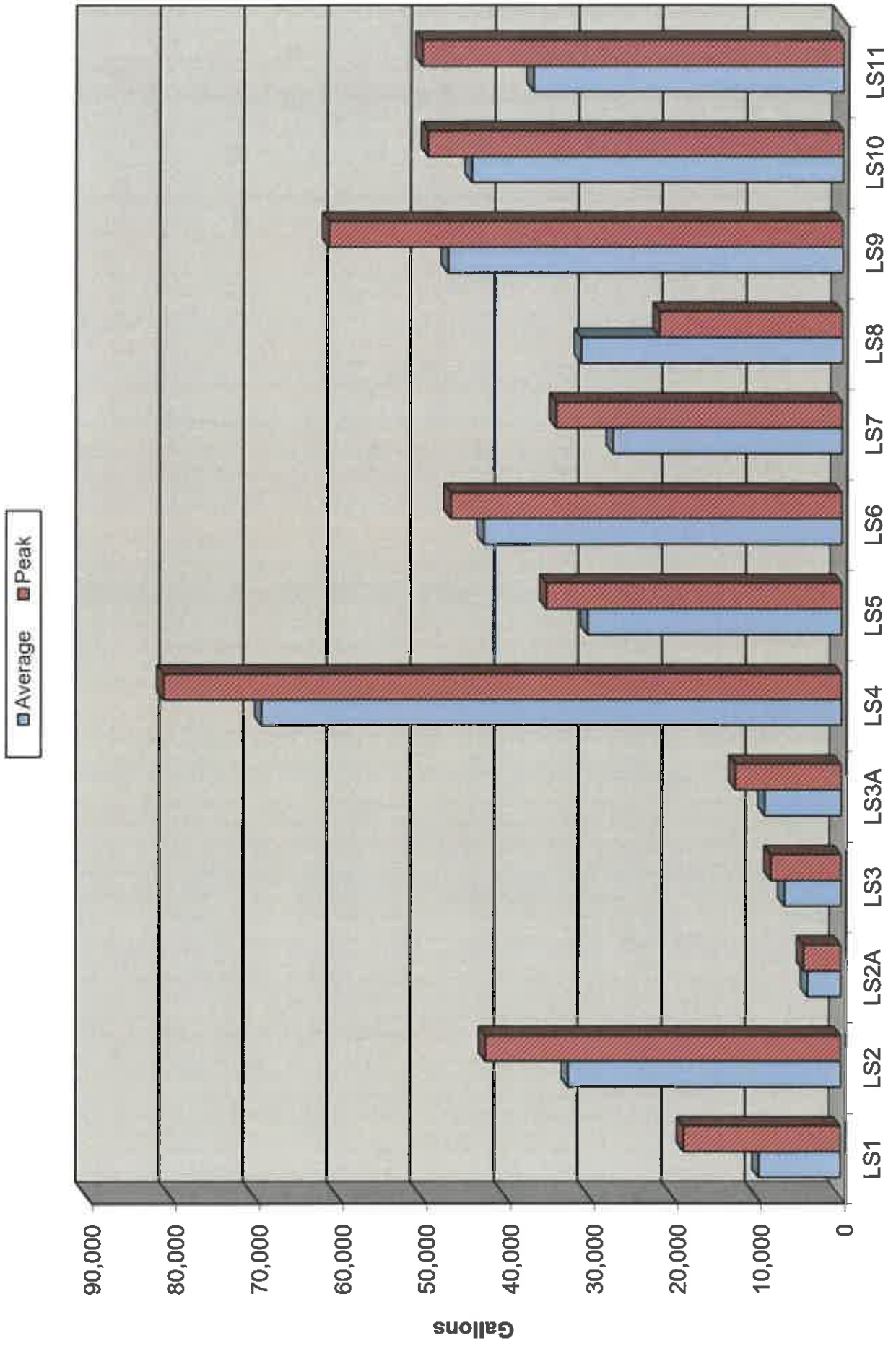
The next meeting of the Lake Committee is scheduled for 7:00 P.M. on Wednesday, October 4, 2023 at the Town Hall.

Attachments

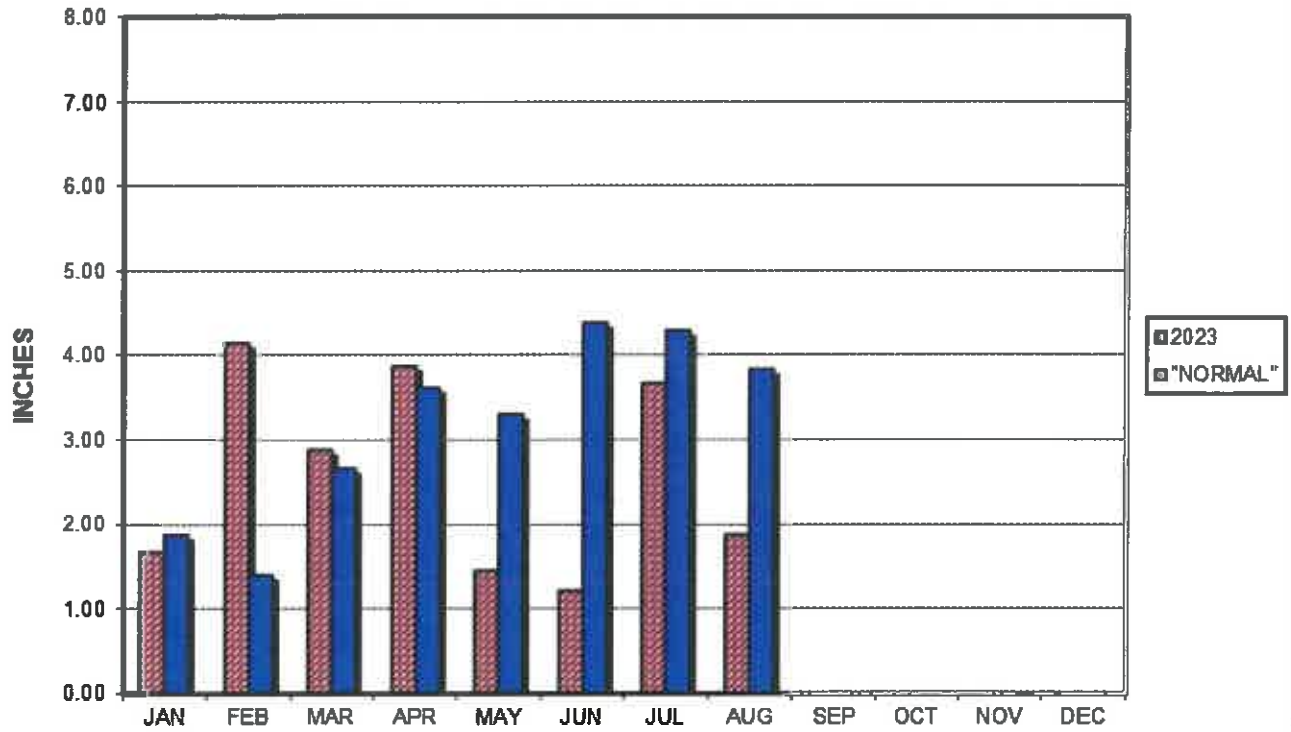
Wastewater Flow/Precipitation - August, 2023



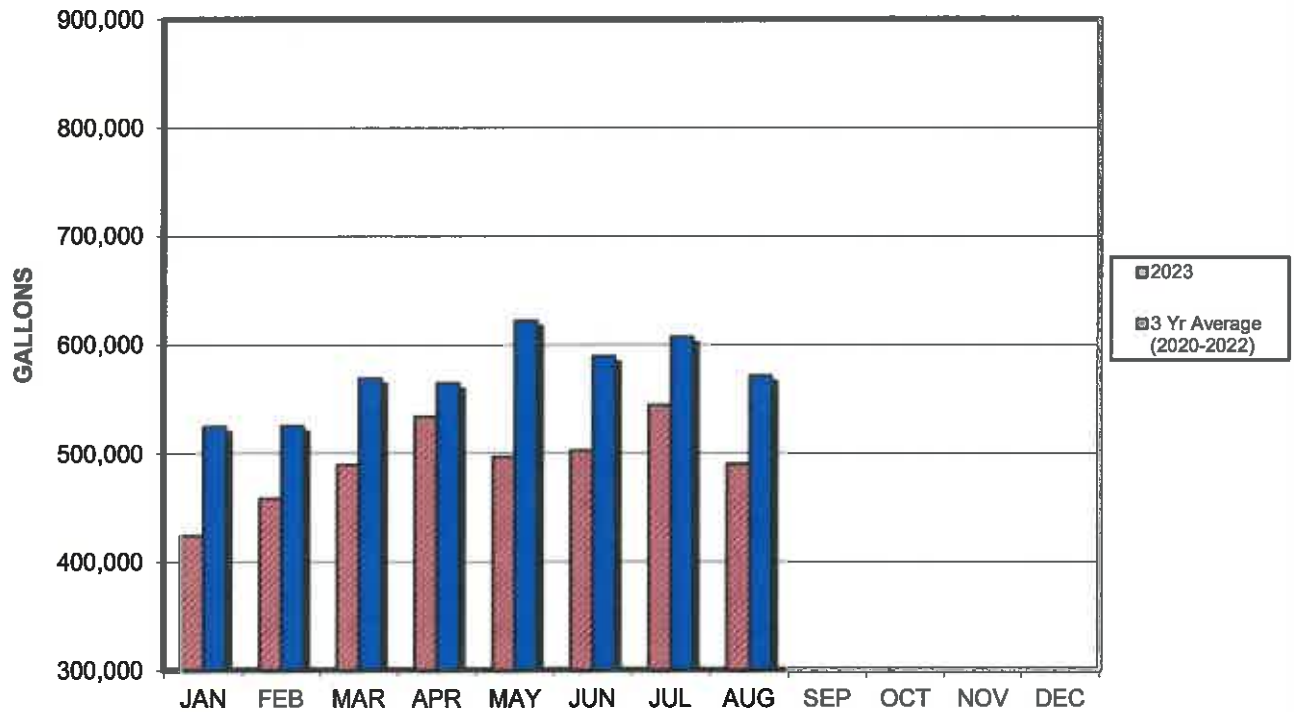
Average Daily Flow/Peak Flow by Area - August, 2023



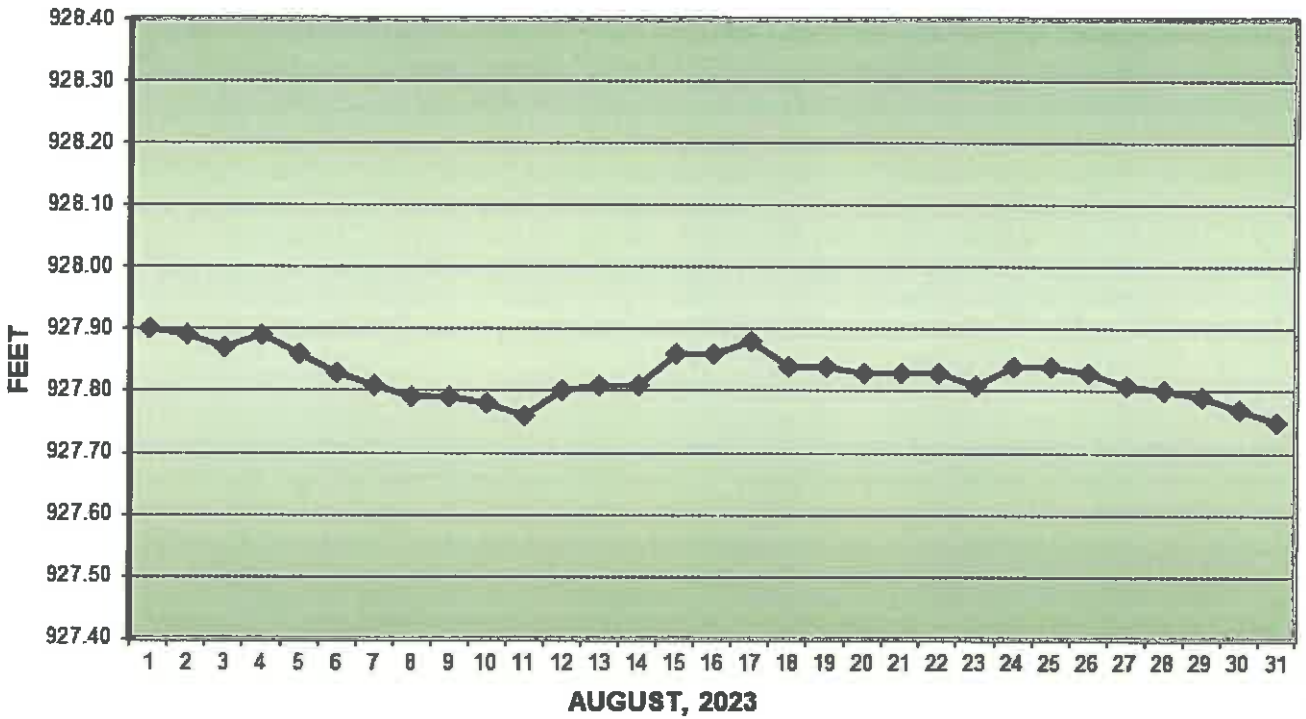
PRECIPITATION - DELAVAN LAKE, WI



AVERAGE WASTEWATER FLOWS



LAKE ELEVATION - DELAVAN LAKE, WI



AVERAGE LAKE ELEVATION - DELAVAN LAKE, WI

