

**DEHAVAN LAKE SANITARY DISTRICT  
ADMINISTRATOR'S REPORT  
AUGUST ACTIVITY 2024**

**ADMINISTRATION**

Villa Clare Development Sanitary Sewer review is in progress.

Lift Station #2A contractor getting things ready to start project, however it is now likely to start after Labor Day due to product delays.

Shores of Delavan moving along, weather permitting to bring 675 ERU's to the district.

View Crest has an August repaving project and staff repaired and seal coated 12 manhole rings.

Engineering will look at Lift Station #7 for a rehab as part of the Lift Station Study done.

Weed harvesting crews are headed back to college and some harvesters will be pulled and start cleaning process.

**SEWER SYSTEM OPERATIONS**

**Building Sewer Connections**

**New Connections for the Month - 3**

**Reconnections for the Month – 2**

**Disconnections for the Month – 1**

**Total Number of Structures Connected to Date – 3,137**

**Total ERU Count for the Month – 4,058**

**Operation and Maintenance**

**Average August Daily Wastewater Flow to WalCoMet – 601,463 gallons**

**Peak August Flow – 704,794gallons**

**Diggers Requests Marked for the Month – 86**

**Emergency Call Outs – 0**

**Lateral Leaks**

**Sump Pump Discharges - 4**

**Current Lateral Leaks - 51**

**Completed Lateral Leak Orders – 5**

The following charts are attached: *Wastewater Flow comparison with Precipitation August, 2024*  
*Average Daily Wastewater Flow comparison with Peak Flow*  
*Precipitation comparison with "normal"*  
*Wastewater Flow comparison with "normal"*  
*Environmental Data Summary*  
*Daily Lake Elevation for August, 2024*  
*Lake Elevation comparison with "normal"*

### **Lake Monitoring/Lake Level**

**Precipitation Total for the Month – 2.93 inches**

**Below Normal – .91 inches**

**Ice On Date – January 15, 2024**

**Ice Off Date – February 27, 2024**

**Secchi Disc Reading Main Lake – 7.0 feet 8/26/2024**

*See attached Lake Elevation Graph and Chart.*

### **Lake Information**

**DNR Lake Level Goal – 927.86 feet**

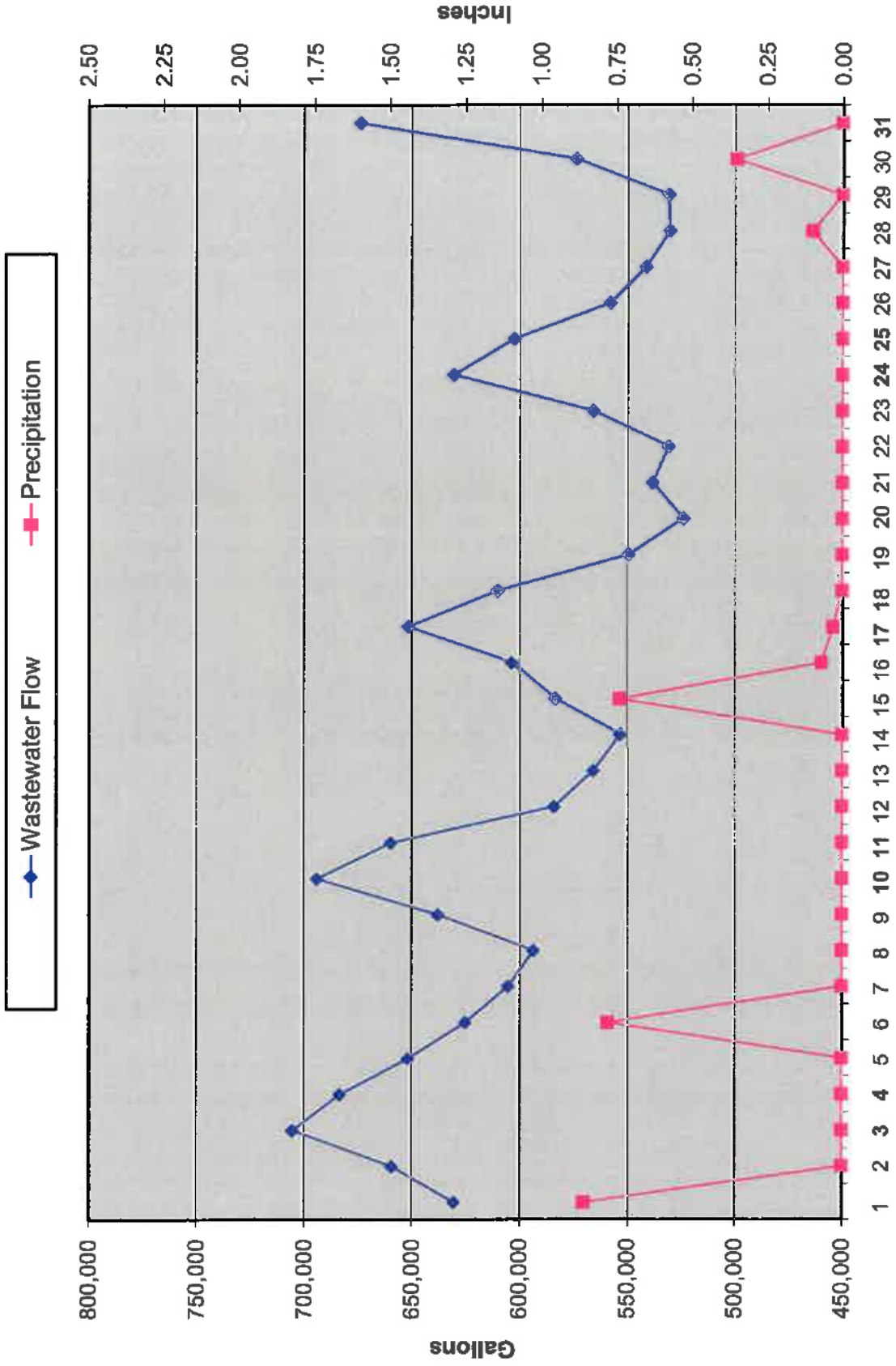
**Average Lake Elevation – 927.86 feet**

### **Lake Committee**

The next meeting of the Lake Committee is scheduled for 7:00 P.M. on Wednesday, October 2, 2024 at the Town Hall.

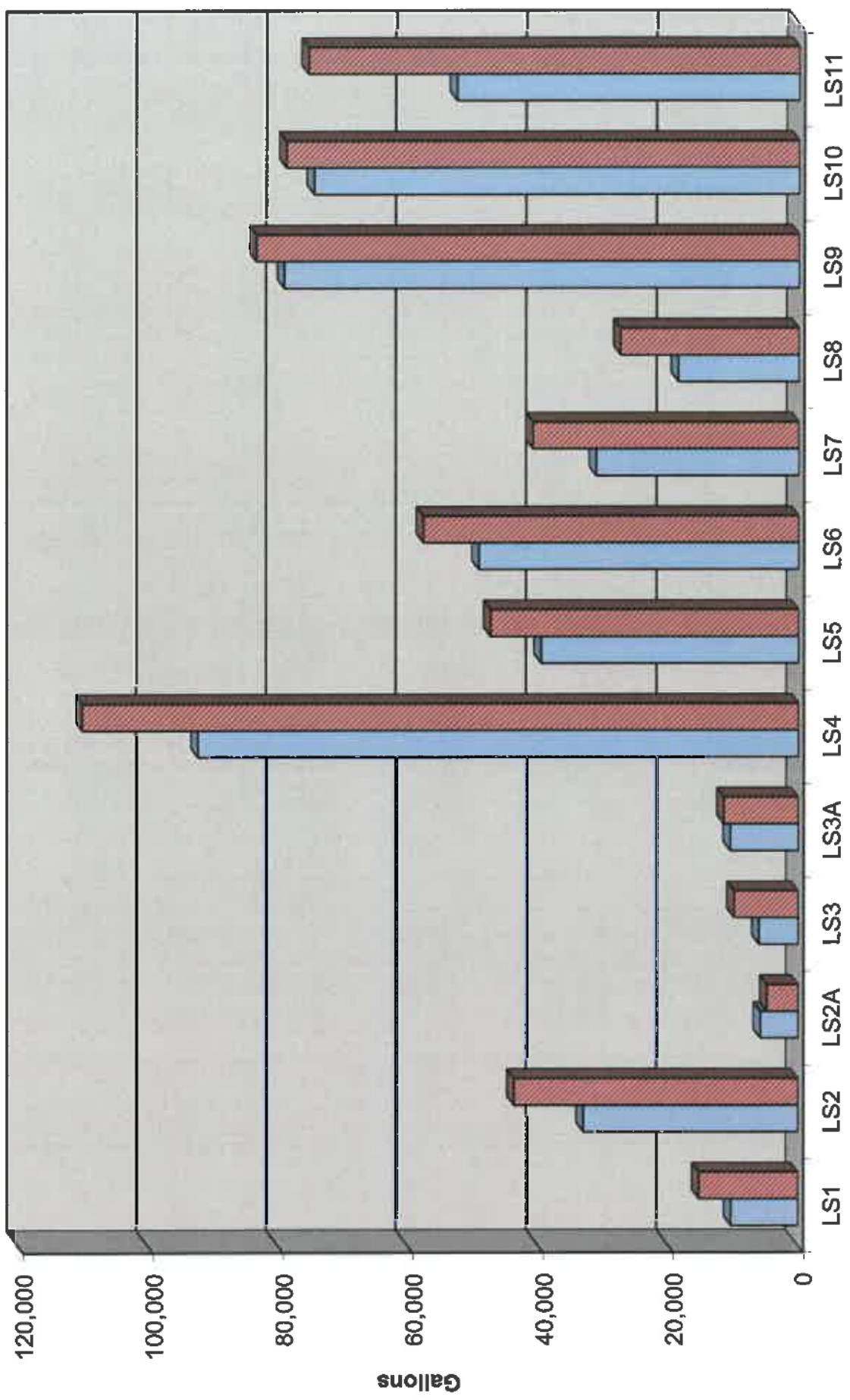
Attachments

### Wastewater Flow/Precipitation - August, 2024

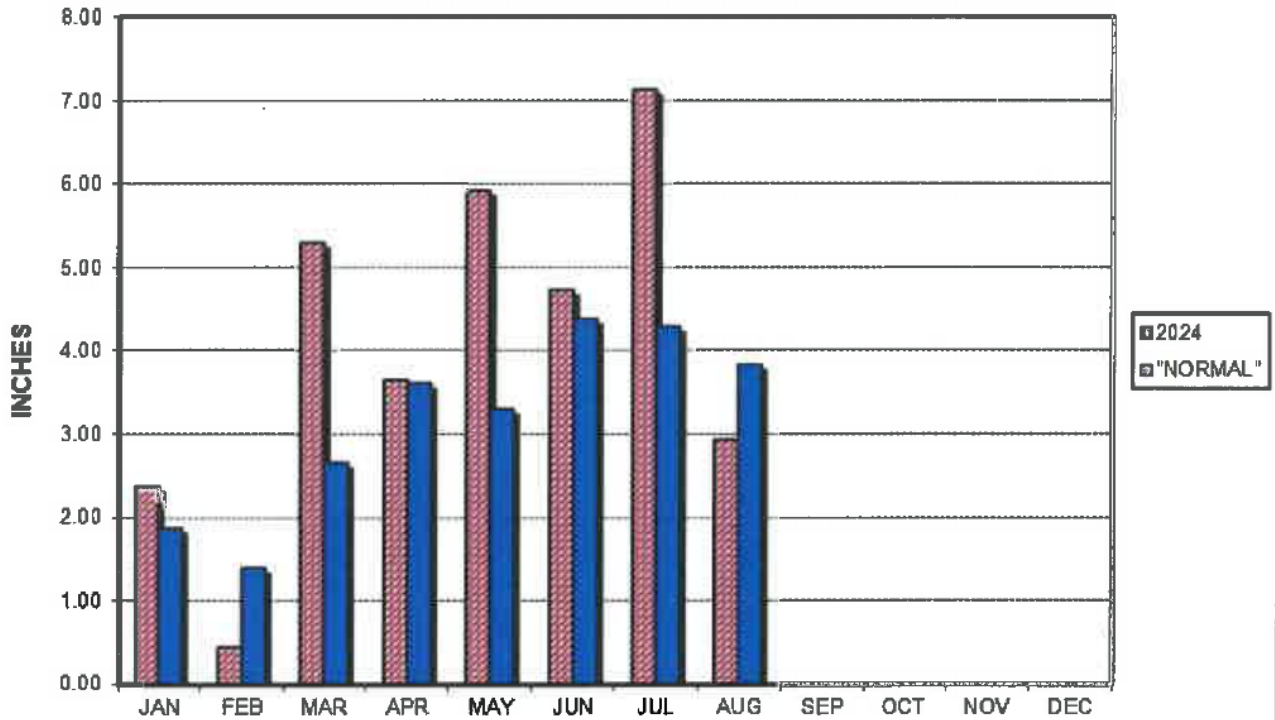


Average Daily Flow/Peak Flow by Area - August, 2024

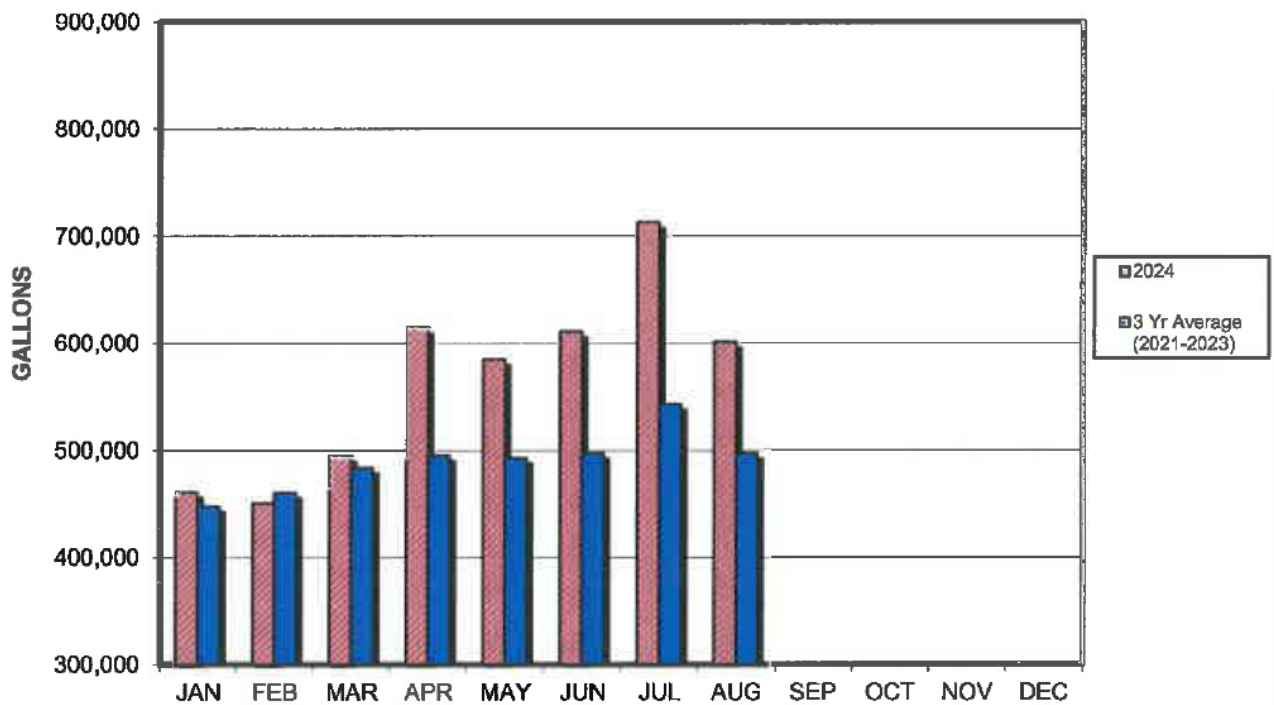
□ Average    ■ Peak



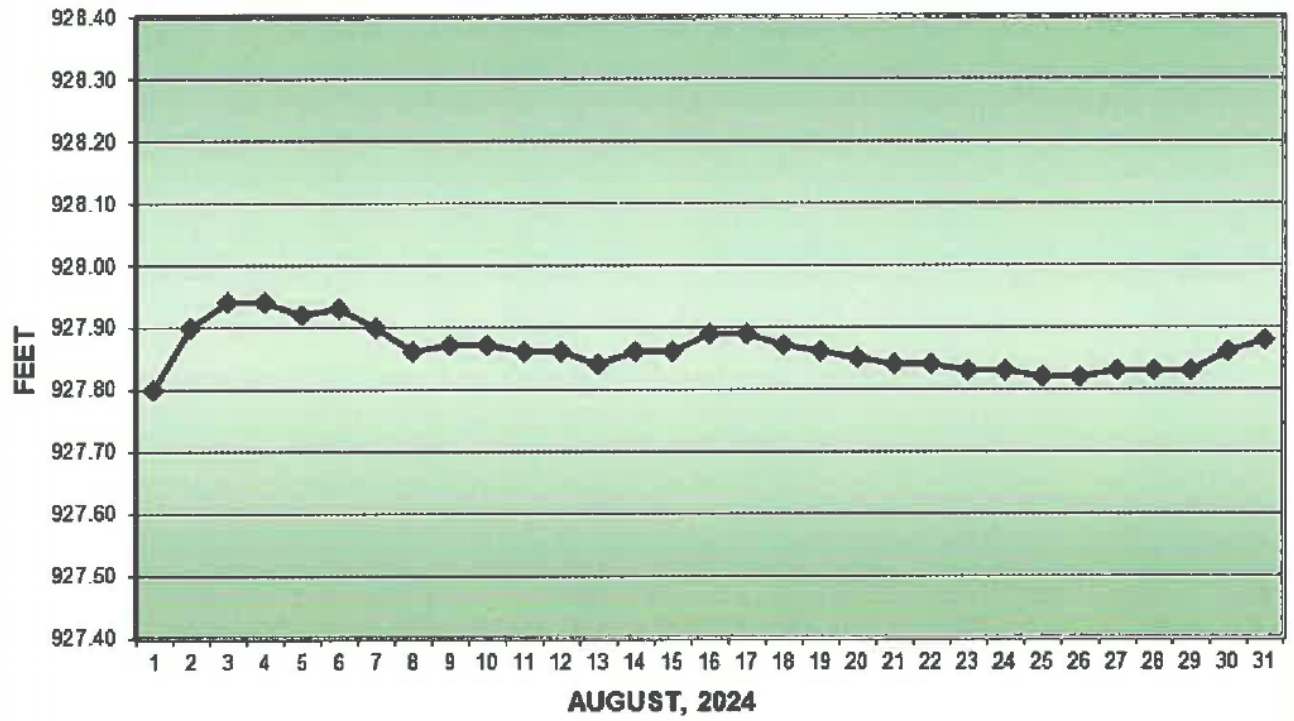
### PRECIPITATION - DELAVAN LAKE, WI



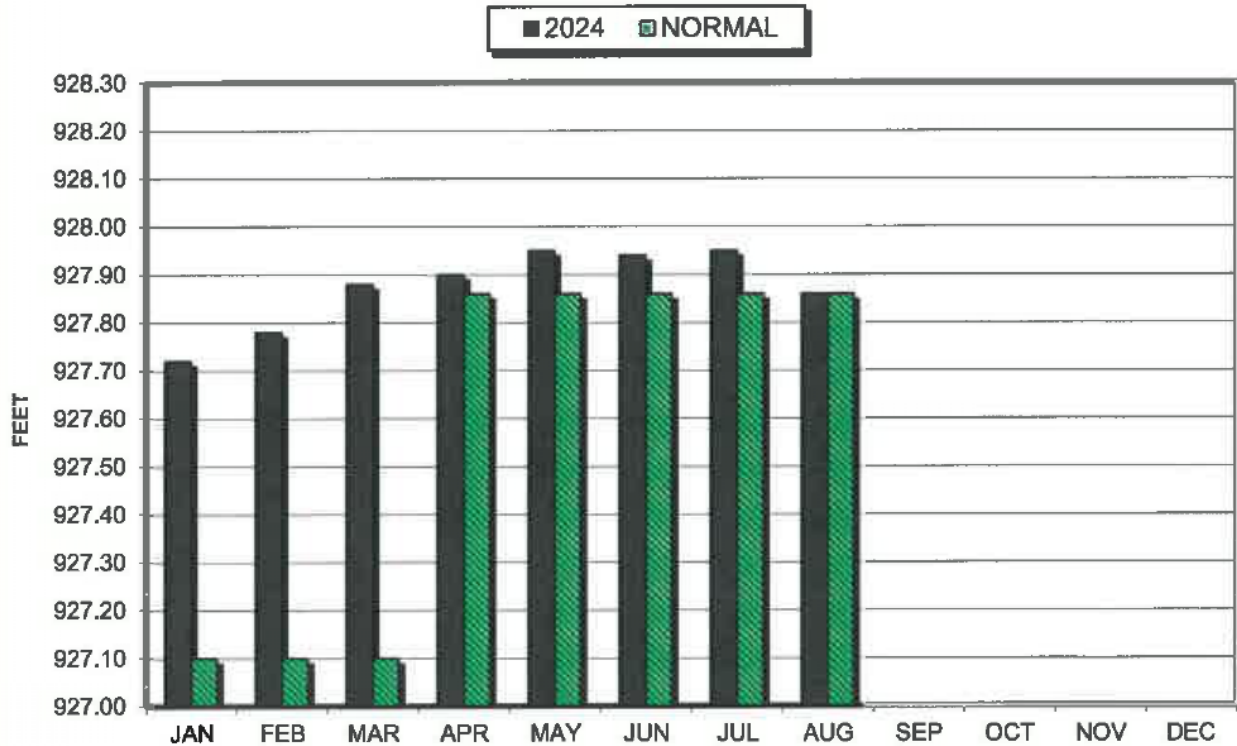
### AVERAGE WASTEWATER FLOWS



### LAKE ELEVATION - DELAVAN LAKE, WI



### AVERAGE LAKE ELEVATION - DELAVAN LAKE, WI



**DATA SUMMARY  
DELAVAN LAKE, WISCONSIN**

Month	Ice On Date	Ice Off Date	Air Temperature			Precipitation		Lake Water Temp.	Average Lake Elevation	Secchi Disc		Cubic Yards Harvested	
			Max.	Min.	Mean	Month (In Inches)	Yr to Date (In Inches)			Average (In Feet)	Maximum (In Feet)	Month	YTD
<b>2022</b>													
JAN	1/10/22		40	-18	11	0.63	0.63	-	927.72	-	-	-	-
FEB			49	-3	23	0.77	1.40	-	927.70	-	-	-	-
MAR		3/23/22	73	6	34	2.91	4.31	-	927.80	-	-	-	-
APR			81	24	52	5.05	9.36	42	927.88	20.0	20.0	387	387
MAY			91	33	62	2.42	11.78	62	927.90	12.7	20.0	2184	2571
JUN			98	47	72	2.21	13.99	74	927.87	9.7	13.0	1431	4002
JUL			90	52	71	2.98	16.97	79	927.68	8.7	10.0	1585	5587
AUG			92	52	72	4.28	21.25	79	927.60	6.6	9.0	305	5892
SEP			85	35	60	7.51	28.76	59	927.85	6.7	7.0	39	5931
OCT			78	29	54	1.67	30.43	-	927.79	-	-	-	-
NOV			75	9	42	1.23	31.66	51	927.77	12.3	15.0	-	-
DEC	12/19/22		56	-13	22	1.67	33.33	-	927.72	-	-	-	-
<b>2023</b>													
JAN			49	-14	18	1.67	1.67	-	927.71	-	-	-	-
FEB			51	-7	22	4.14	5.81	-	927.78	-	-	-	-
MAR		3/10/23	69	9	39	2.89	8.70	-	927.81	-	-	-	-
APR			82	26	54	3.87	12.57	49	927.83	8.0	9.0	855	855
MAY			91	35	63	1.45	14.02	62	927.85	21.8	38.0	1553	2408
JUN			92	43	67	1.22	15.24	70	927.73	9.6	17.0	1558	3966
JUL			92	53	72	3.67	18.91	75	927.68	6.0	8.0	1620	5586
AUG			97	44	71	1.88	20.79	76	927.83	7.3	10.0	854	6440
SEP			93	42	68	3.78	24.57	68	927.75	8.7	12.0	146	6586
OCT			86	24	55	3.01	27.58	-	927.89	-	-	-	-
NOV			68	10	39	1.01	28.59	-	927.84	-	-	-	-
DEC			56	13	34	2.13	30.72	-	927.75	-	30.0	-	-
<b>2024</b>													
JAN	1/15/24		38	-16	11	2.36	2.36	-	927.72	-	-	-	-
FEB		2/27/24	74	10	42	0.44	2.80	-	927.78	-	-	-	-
MAR			72	22	47	5.31	8.11	-	927.88	-	-	-	-
APR			82	28	55	3.65	11.76	-	927.90	-	-	-	-
MAY			87	44	65	5.93	17.69	67	927.95	18.2	28.0	466	466
JUN			94	47	70	4.73	22.42	71	927.94	7.6	15.0	1476	1942
JUL			91	50	71	7.14	29.56	84	927.95	6.0	6.0	2035	3977
AUG			95	48	71	2.93	32.49	75	927.86	7.0	7.0	1692	5669