

**DELANVAN LAKE SANITARY DISTRICT
ADMINISTRATOR'S REPORT
DECEMBER ACTIVITY 2024**

ADMINISTRATION

Lift Station #2A project is complete with only punch lists left.

Shores of Delavan started sewer lateral connections.

Weed harvesting equipment repairs in progress to be ready for spring.

Glen Eyre roads are pulverized; however, asphalt was delayed to 2025 so crew will be keeping an eye on this thru the winter for plow damage to manholes.

The temperatures are warm. Thin ice conditions in areas is a concern and much of the lake is open.

SEWER SYSTEM OPERATIONS

Building Sewer Connections

New Connections for the Month - 0

Reconnections for the Month - 1

Disconnections for the Month - 1

Total Number of Structures Connected to Date - 3,142

Total ERU Count for the Month - 4,066

Operation and Maintenance

Average December Daily Wastewater Flow to WalCoMet - 488,367 gallons

Peak December Flow - 543,764 gallons

Diggers Requests Marked for the Month - 61

Emergency Call Outs - 0

Lateral Leaks

Sump Pump Discharges - 4

Current Lateral Leaks - 51

Completed Lateral Leak Orders - 5

The following charts are attached: *Wastewater Flow comparison with Precipitation December, 2024*
Average Daily Wastewater Flow comparison with Peak Flow
Precipitation comparison with "normal"
Wastewater Flow comparison with "normal"
Environmental Data Summary
Daily Lake Elevation for December, 2024
Lake Elevation comparison with "normal"

Lake Monitoring/Lake Level

Precipitation Total for the Month – .75 inches
Below Normal – 1.40 inches
Ice Off Date – February 27, 2024
Ice On Date – January 7, 2025

Secchi Disc Reading Main Lake – 12.0 feet 11/15/2024

See attached Lake Elevation Graph and Chart.

Lake Information

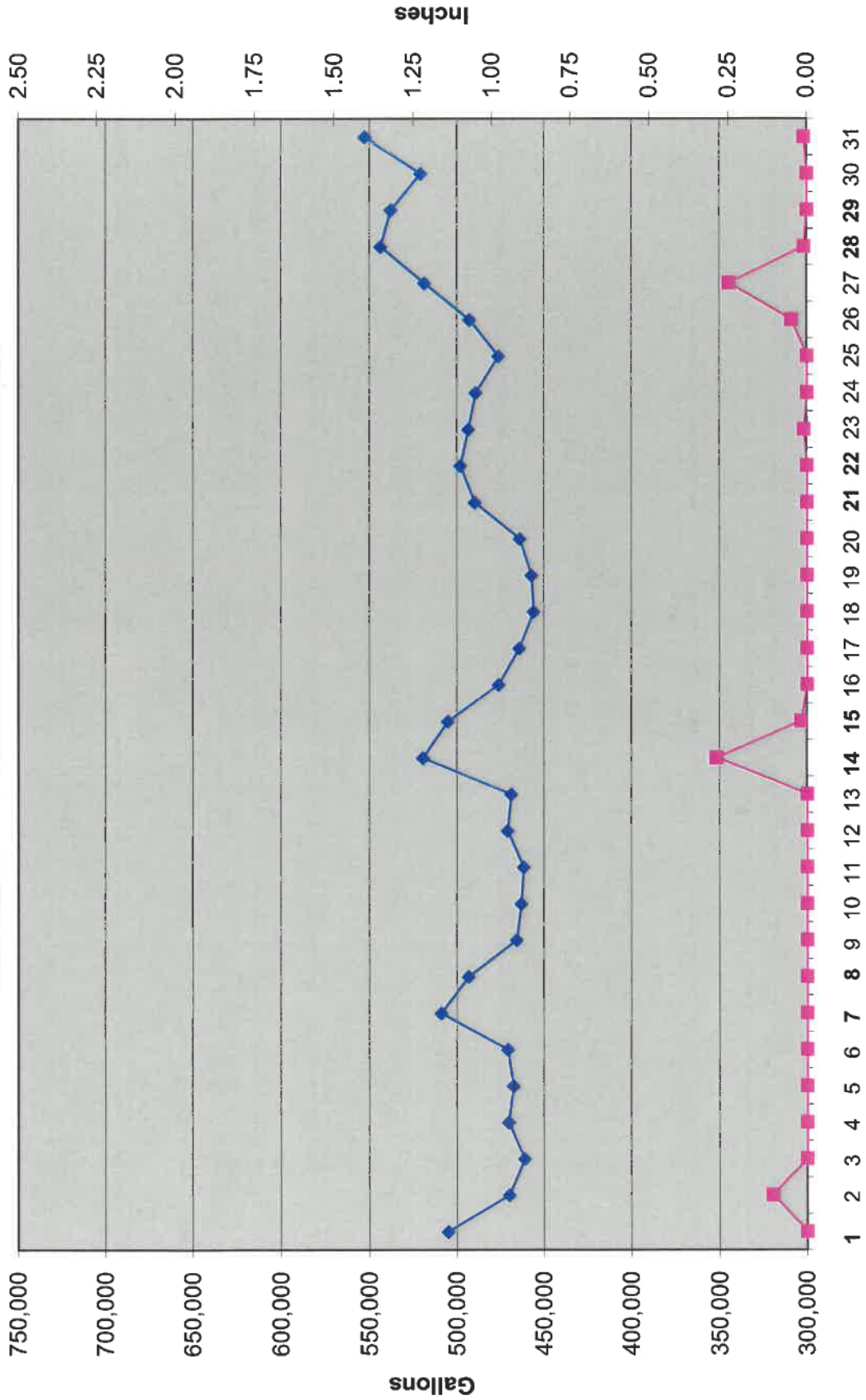
DNR Lake Level Goal – 927.86 feet
Average Lake Elevation – 927.85 feet

Lake Committee

The next meeting of the Lake Committee is scheduled for 7:00 P.M. on Wednesday, February 5, 2025 at the Town Hall.

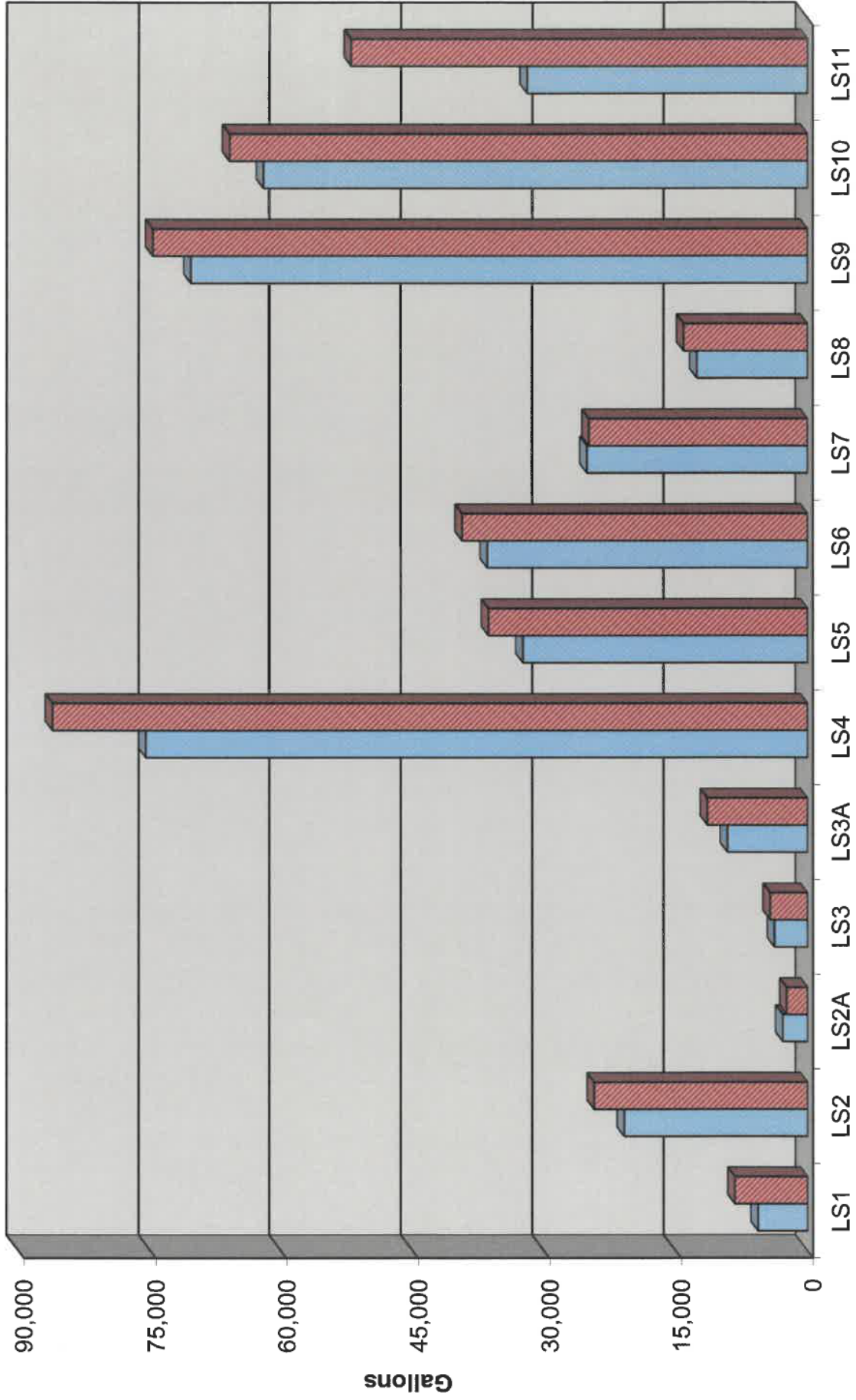
Attachments

Wastewater Flow/Precipitation - December, 2024

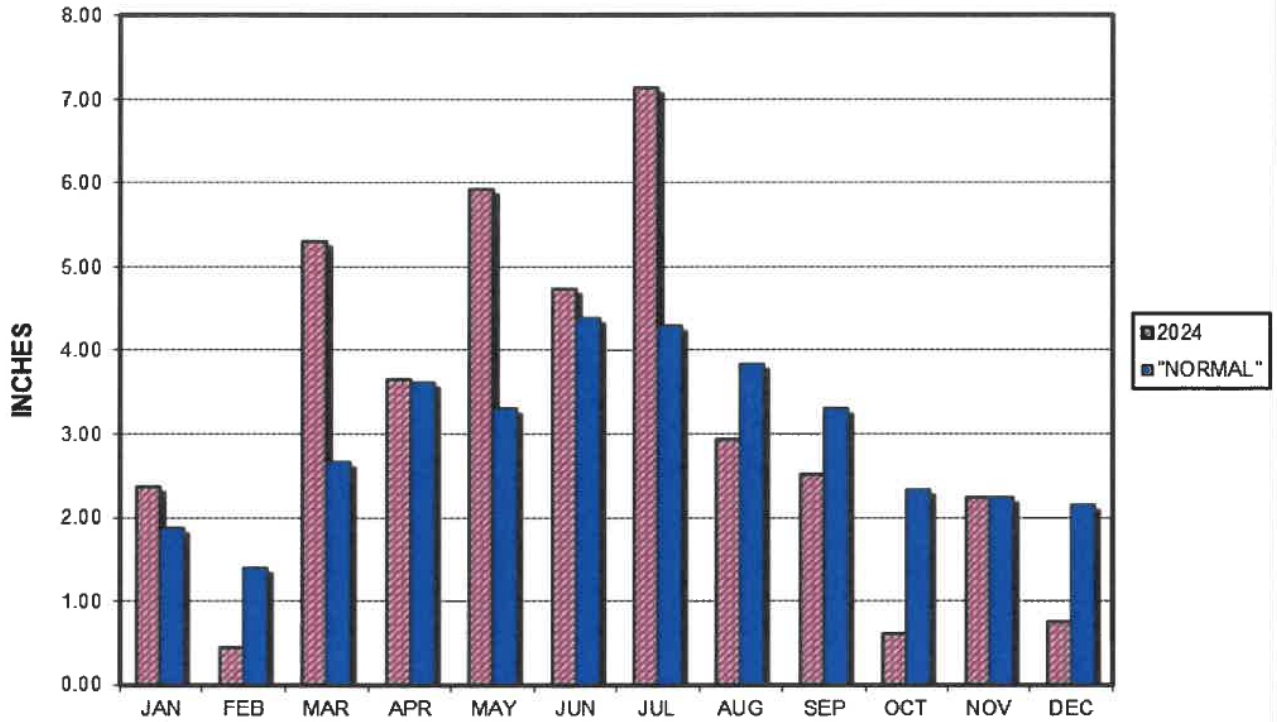


Average Daily Flow/Peak Flow by Area - December, 2024

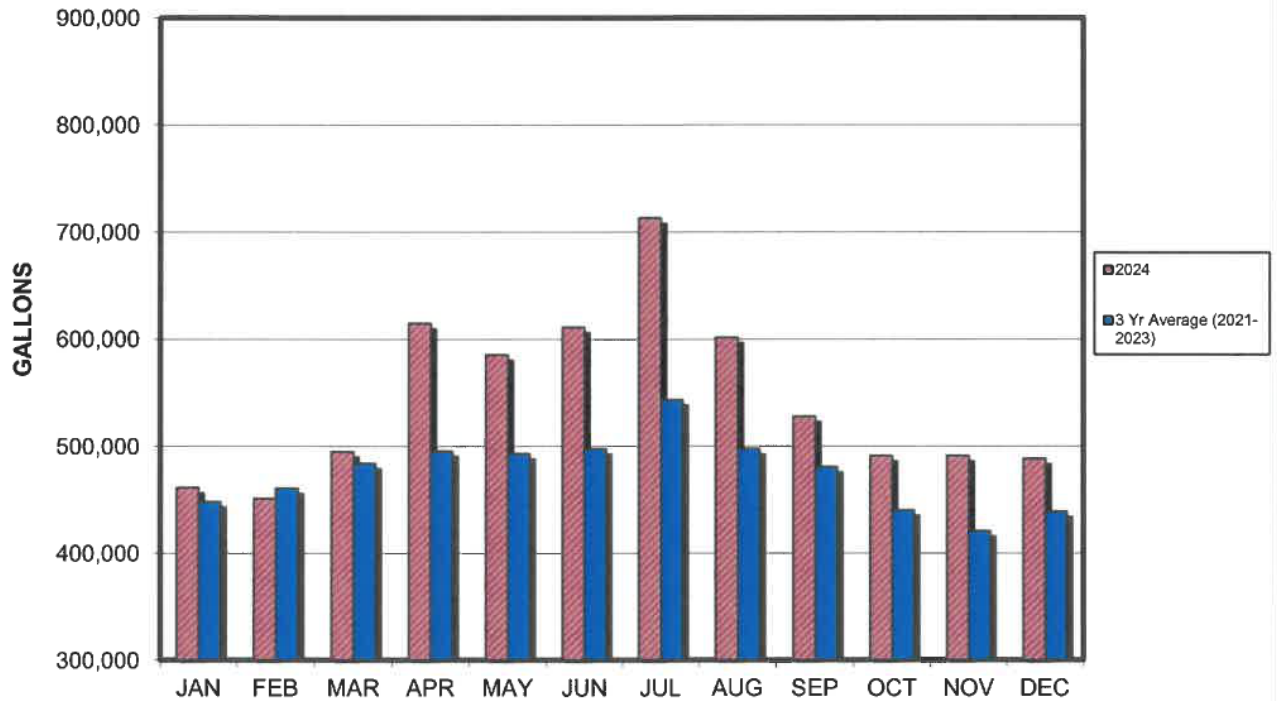
Average Peak



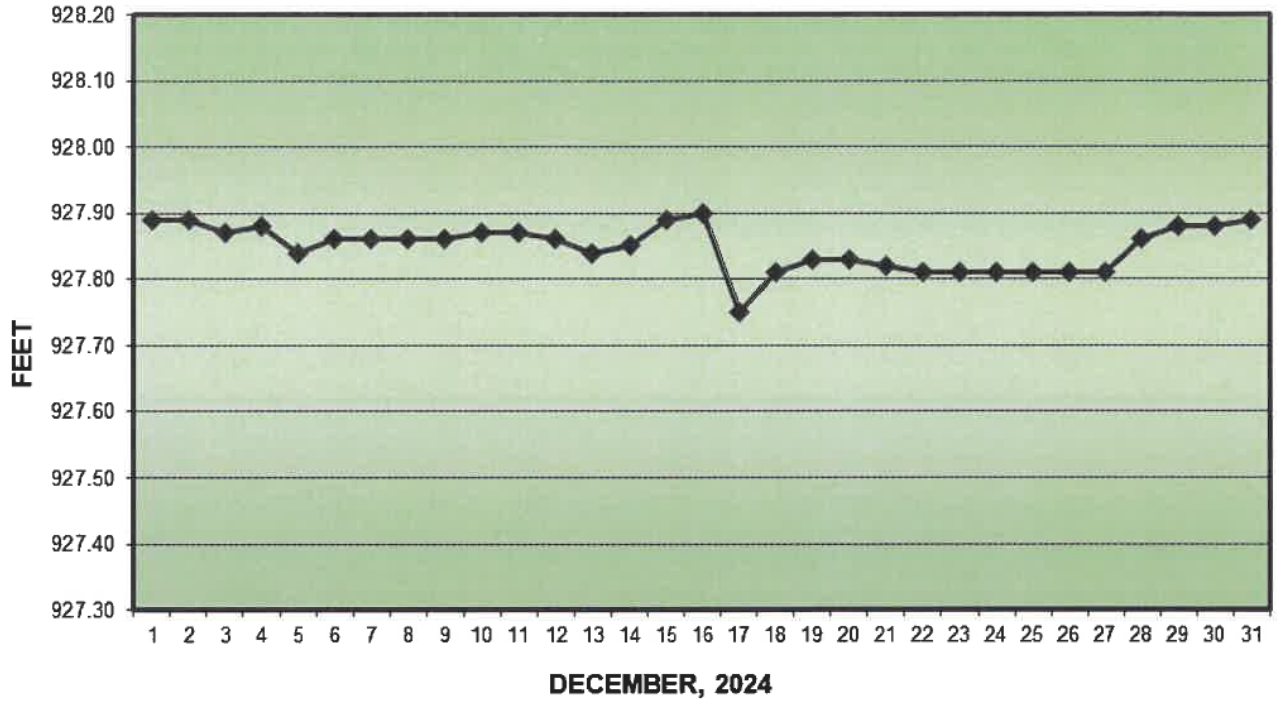
PRECIPITATION - DELAVAN LAKE, WI



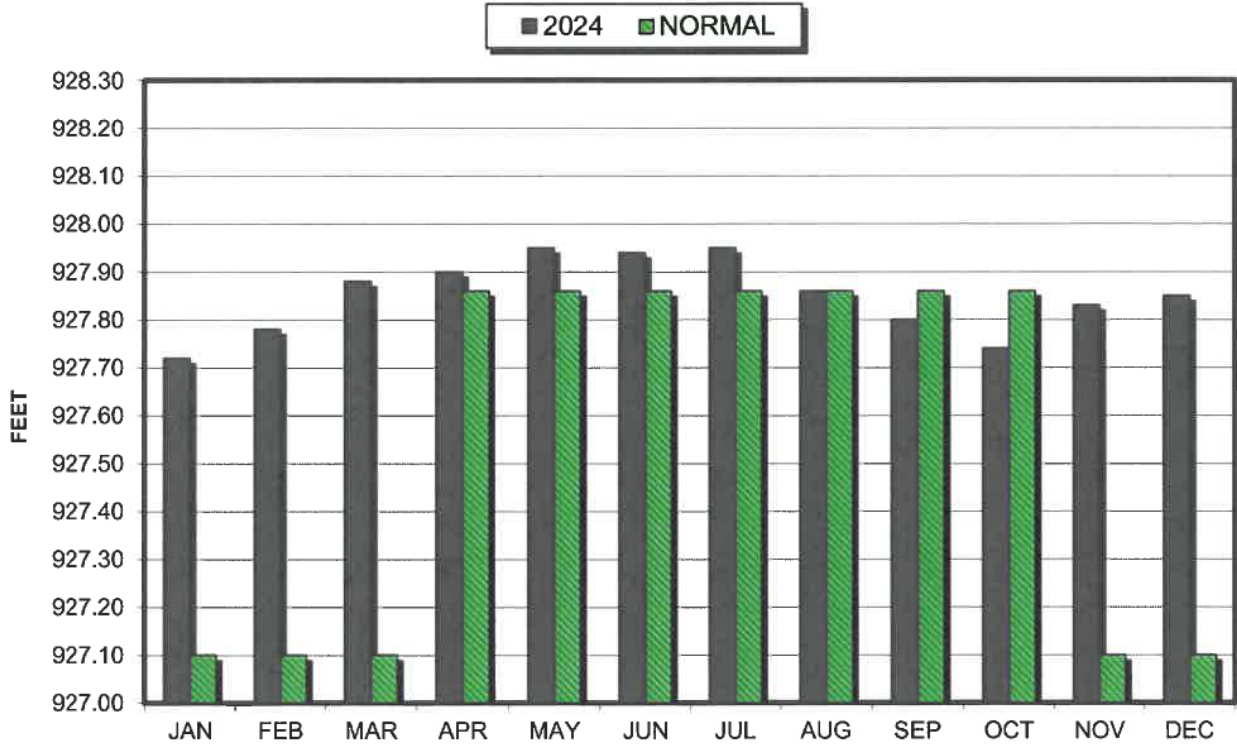
AVERAGE WASTEWATER FLOWS



LAKE ELEVATION - DELAVAN LAKE, WI



AVERAGE LAKE ELEVATION - DELAVAN LAKE, WI



**DATA SUMMARY
DELAVAN LAKE, WISCONSIN**

| Month | Ice On Date | Ice Off Date | Air Temperature | | Precipitation | | Lake Water Temp. | Average Lake Elevation | Secchi Disc | | Cubic Yards Harvested | |
|-------------|-------------|--------------|-----------------|------|---------------|-------------------|------------------|------------------------|------------------------|-------------------|-----------------------|-------|
| | | | Max. | Min. | Mean | Month (In Inches) | | | Yr to Date (In Inches) | Average (In Feet) | Maximum (In Feet) | Month |
| 2022 | | | | | | | | | | | | |
| JAN | 1/10/22 | | 40 | -18 | 11 | 0.63 | - | 927.72 | - | - | - | - |
| FEB | | | 49 | -3 | 23 | 0.77 | - | 927.70 | - | - | - | - |
| MAR | | 3/23/22 | 73 | 6 | 34 | 2.91 | - | 927.80 | - | - | - | - |
| APR | | | 81 | 24 | 52 | 5.05 | 42 | 927.88 | 20.0 | 20.0 | 387 | 387 |
| MAY | | | 91 | 33 | 62 | 2.42 | 62 | 927.90 | 12.7 | 20.0 | 2184 | 2571 |
| JUN | | | 98 | 47 | 72 | 2.21 | 74 | 927.87 | 9.7 | 13.0 | 1431 | 4002 |
| JUL | | | 90 | 52 | 71 | 2.98 | 79 | 927.68 | 8.7 | 10.0 | 1585 | 5587 |
| AUG | | | 92 | 52 | 72 | 4.28 | 79 | 927.60 | 6.6 | 9.0 | 305 | 5892 |
| SEP | | | 85 | 35 | 60 | 7.51 | 59 | 927.85 | 6.7 | 7.0 | 39 | 5931 |
| OCT | | | 78 | 29 | 54 | 1.67 | - | 927.79 | - | - | - | - |
| NOV | | | 75 | 9 | 42 | 1.23 | 51 | 927.77 | 12.3 | 15.0 | - | - |
| DEC | 12/19/22 | | 56 | -13 | 22 | 1.67 | - | 927.72 | - | - | - | - |
| 2023 | | | | | | | | | | | | |
| JAN | | | 49 | -14 | 18 | 1.67 | - | 927.71 | - | - | - | - |
| FEB | | | 51 | -7 | 22 | 4.14 | - | 927.78 | - | - | - | - |
| MAR | | 3/10/23 | 69 | 9 | 39 | 2.89 | - | 927.81 | - | - | - | - |
| APR | | | 82 | 26 | 54 | 3.87 | 49 | 927.83 | 8.0 | 9.0 | 855 | 855 |
| MAY | | | 91 | 35 | 63 | 1.45 | 62 | 927.85 | 21.8 | 38.0 | 1553 | 2408 |
| JUN | | | 92 | 43 | 67 | 1.22 | 70 | 927.73 | 9.6 | 17.0 | 1558 | 3966 |
| JUL | | | 92 | 53 | 72 | 3.67 | 75 | 927.68 | 6.0 | 8.0 | 1620 | 5586 |
| AUG | | | 97 | 44 | 71 | 1.88 | 76 | 927.83 | 7.3 | 10.0 | 854 | 6440 |
| SEP | | | 93 | 42 | 68 | 3.78 | 68 | 927.75 | 8.7 | 12.0 | 146 | 6586 |
| OCT | | | 86 | 24 | 55 | 3.01 | - | 927.89 | - | - | - | - |
| NOV | | | 68 | 10 | 39 | 1.01 | - | 927.84 | - | - | - | - |
| DEC | | | 56 | 13 | 34 | 2.13 | - | 927.75 | - | 30.0 | - | - |
| 2024 | | | | | | | | | | | | |
| JAN | 1/15/24 | | 38 | -16 | 11 | 2.36 | - | 927.72 | - | - | - | - |
| FEB | | 2/27/24 | 74 | 10 | 42 | 0.44 | - | 927.78 | - | - | - | - |
| MAR | | | 72 | 22 | 47 | 5.31 | - | 927.88 | - | - | - | - |
| APR | | | 82 | 28 | 55 | 3.65 | - | 927.90 | - | - | - | - |
| MAY | | | 87 | 44 | 65 | 5.93 | 67 | 927.95 | 18.2 | 28.0 | 466 | 466 |
| JUN | | | 94 | 47 | 70 | 4.73 | 71 | 927.94 | 7.6 | 15.0 | 1476 | 1942 |
| JUL | | | 91 | 50 | 71 | 7.14 | 84 | 927.95 | 6.0 | 6.0 | 2035 | 3977 |
| AUG | | | 95 | 48 | 71 | 2.93 | 75 | 927.86 | 7.0 | 7.0 | 1692 | 5669 |
| SEP | | | 91 | 42 | 66 | 2.51 | 77 | 927.80 | 8.8 | 10.0 | 1769 | 7438 |
| OCT | | | 84 | 32 | 58 | 0.60 | 66 | 927.74 | 7.3 | 12.0 | 590 | 8028 |
| NOV | | | 65 | 12 | 39 | 2.24 | - | 927.83 | 12 | 12 | - | - |
| DEC | | | 54 | -1 | 26 | 0.75 | - | 927.85 | - | - | - | - |