

**DELAVAN LAKE SANITARY DISTRICT  
ADMINISTRATOR'S REPORT  
DECEMBER ACTIVITY 2024**

**ADMINISTRATION**

Lift Station #2A project is complete with only punch lists left.

Shores of Delavan started sewer lateral connections.

Weed harvesting equipment repairs in progress to be ready for spring.

Glen Eyre roads are pulverized; however, asphalt was delayed to 2025 so crew will be keeping an eye on this thru the winter for plow damage to manholes.

The temperatures are warm. Thin ice conditions in areas is a concern and much of the lake is open.

**SEWER SYSTEM OPERATIONS**

**Building Sewer Connections**

**New Connections for the Month - 0**

**Reconnections for the Month - 1**

**Disconnections for the Month - 1**

**Total Number of Structures Connected to Date - 3,142**

**Total ERU Count for the Month - 4,066**

**Operation and Maintenance**

**Average December Daily Wastewater Flow to WalCoMet - 488,367 gallons**

**Peak December Flow - 543,764 gallons**

**Diggers Requests Marked for the Month - 61**

**Emergency Call Outs - 0**

**Lateral Leaks**

**Sump Pump Discharges - 4**

**Current Lateral Leaks - 51**

**Completed Lateral Leak Orders - 5**

The following charts are attached: *Wastewater Flow comparison with Precipitation December, 2024*  
*Average Daily Wastewater Flow comparison with Peak Flow*  
*Precipitation comparison with "normal"*  
*Wastewater Flow comparison with "normal"*  
*Environmental Data Summary*  
*Daily Lake Elevation for December, 2024*  
*Lake Elevation comparison with "normal"*

### **Lake Monitoring/Lake Level**

**Precipitation Total for the Month – .75 inches**  
**Below Normal – 1.40 inches**  
**Ice Off Date – February 27, 2024**  
**Ice On Date – January 7, 2025**

**Secchi Disc Reading Main Lake – 12.0 feet 11/15/2024**

*See attached Lake Elevation Graph and Chart.*

### **Lake Information**

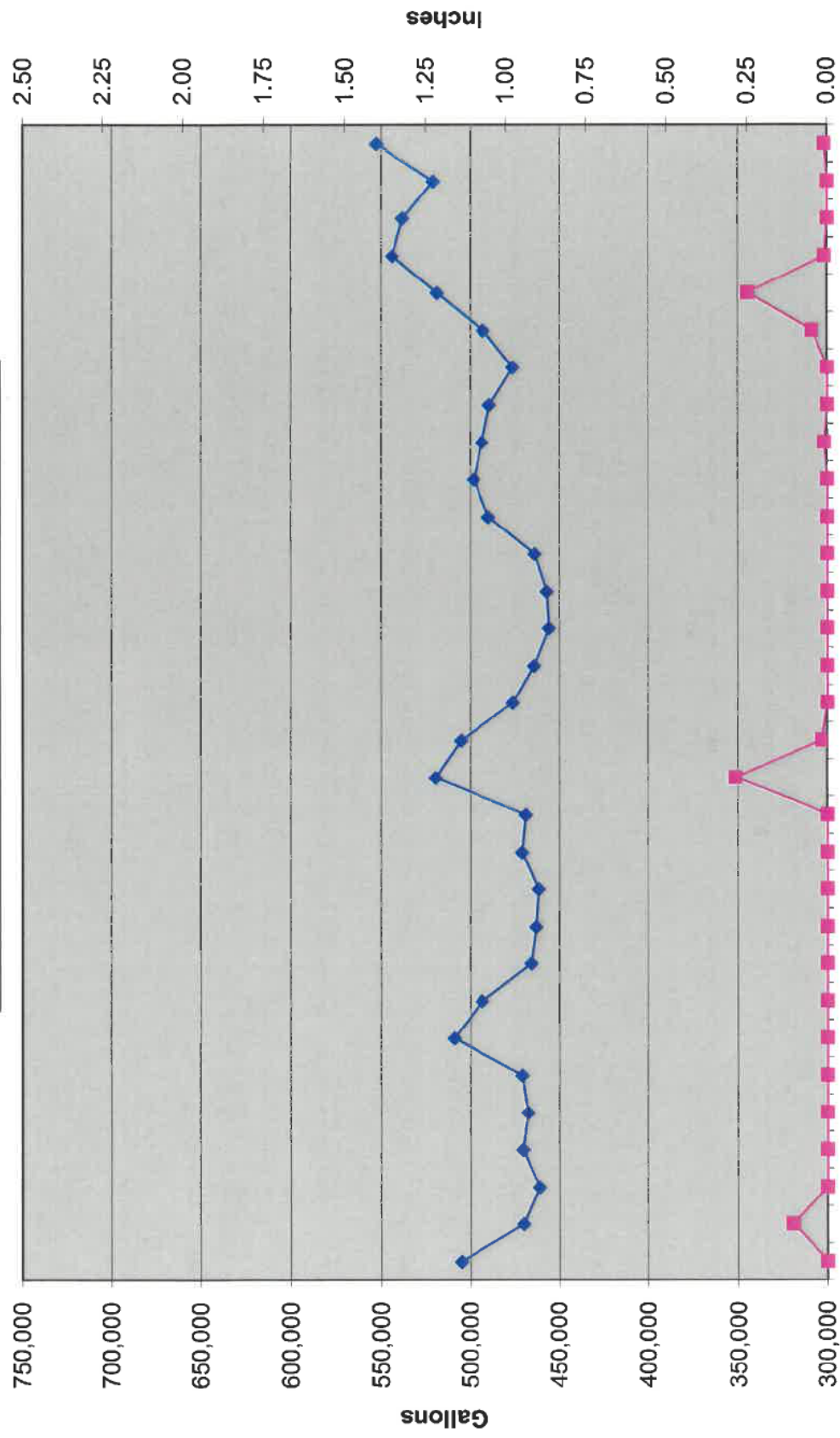
**DNR Lake Level Goal – 927.86 feet**  
**Average Lake Elevation – 927.85 feet**

### **Lake Committee**

The next meeting of the Lake Committee is scheduled for 7:00 P.M. on Wednesday, February 5, 2025 at the Town Hall.

Attachments

### Wastewater Flow/Precipitation - December, 2024



750,000  
700,000  
650,000  
600,000  
550,000  
500,000  
450,000  
400,000  
350,000  
300,000

Gallons

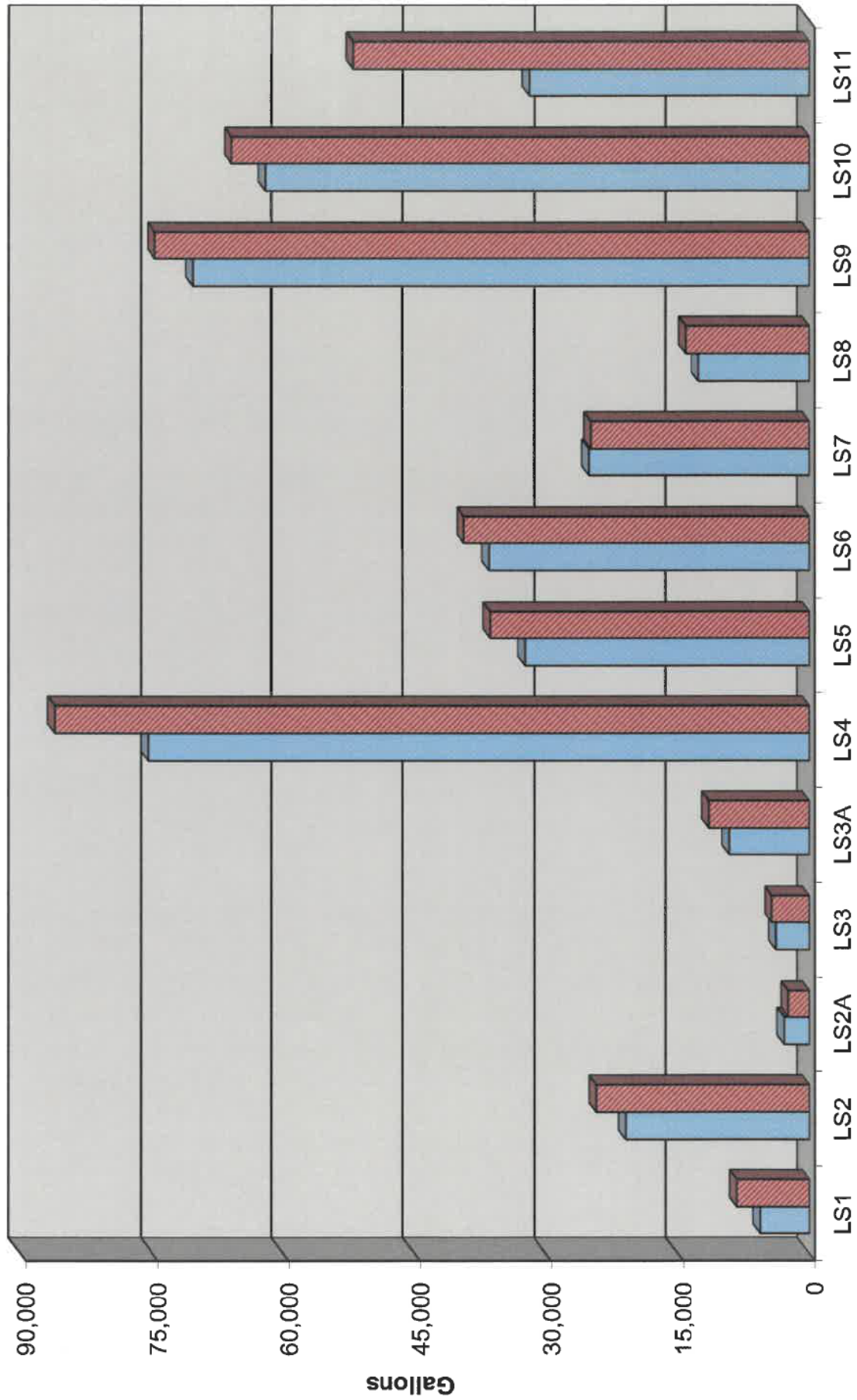
2.50  
2.25  
2.00  
1.75  
1.50  
1.25  
1.00  
0.75  
0.50  
0.25  
0.00

Inches

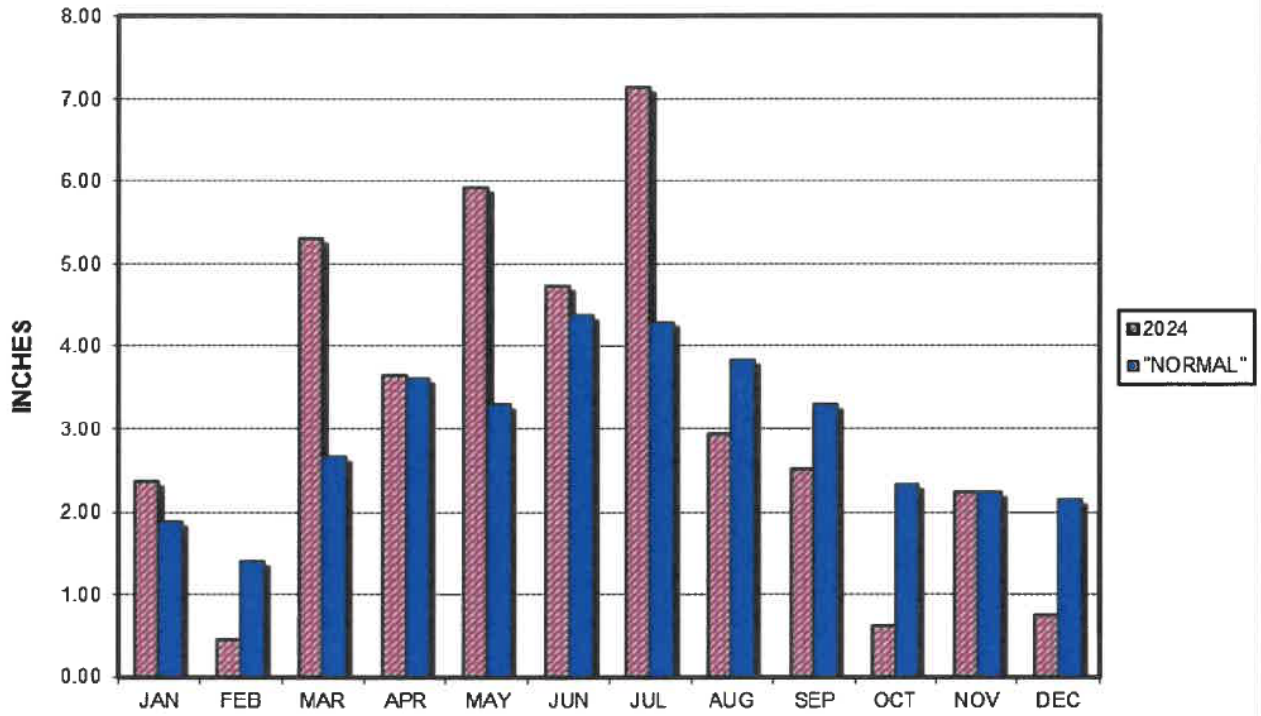
1 2 3 4 5 6 7 8 9 10 11 12 13 14 15 16 17 18 19 20 21 22 23 24 25 26 27 28 29 30 31

Average Daily Flow/Peak Flow by Area - December, 2024

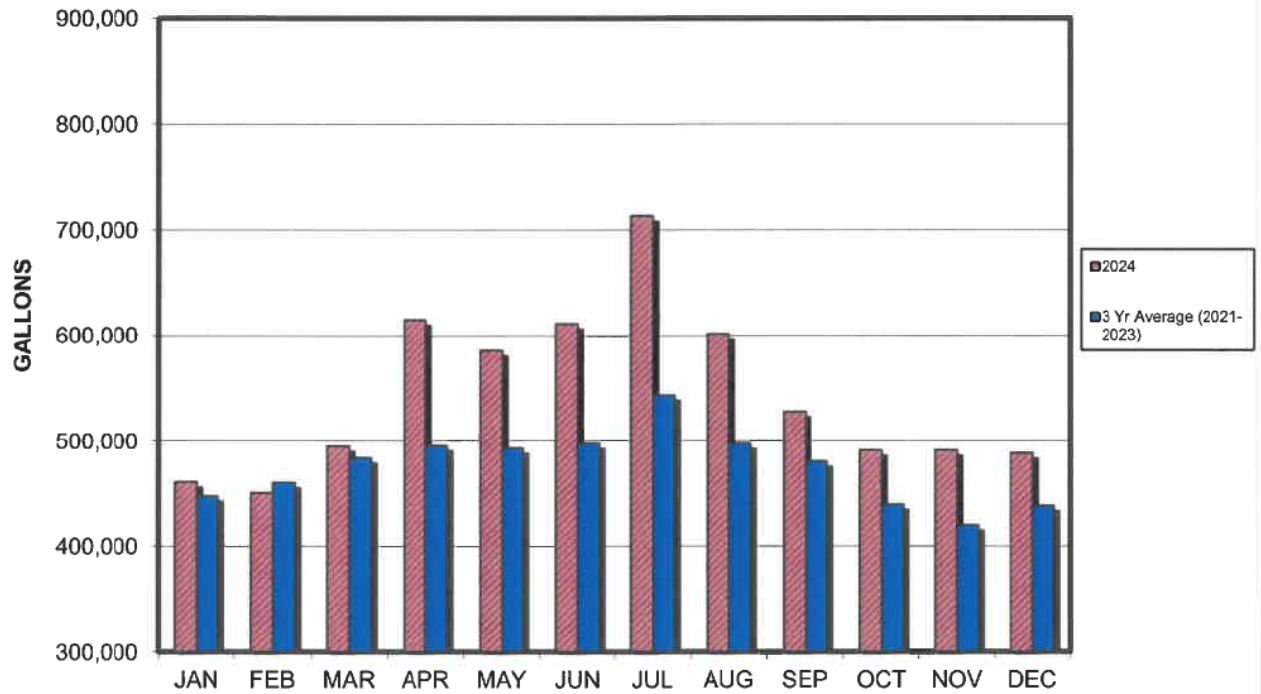
Average Peak



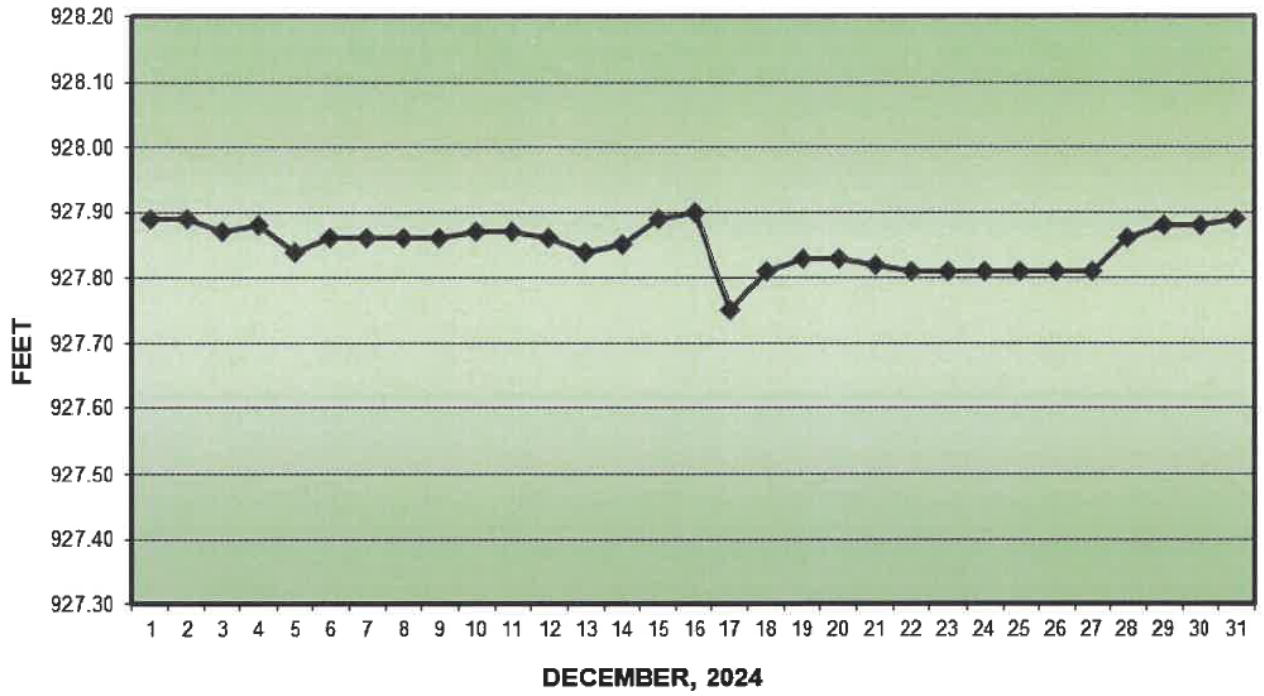
### PRECIPITATION - DELAVAN LAKE, WI



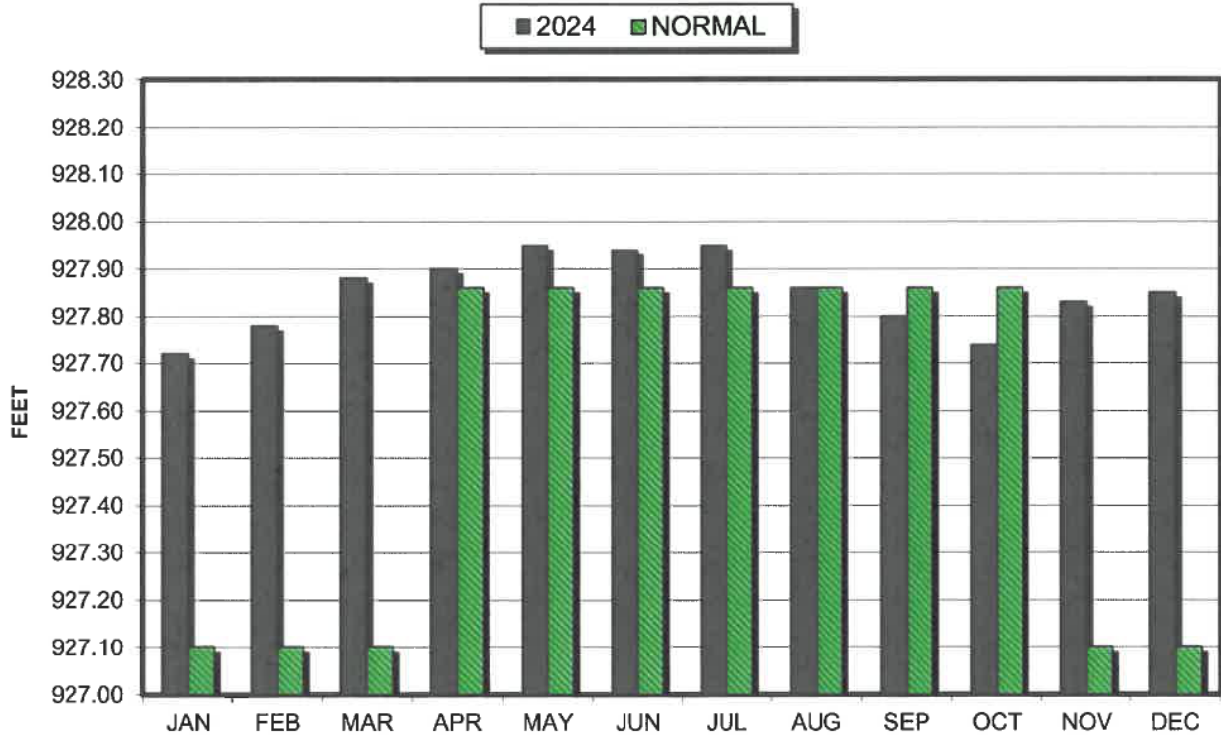
### AVERAGE WASTEWATER FLOWS



### LAKE ELEVATION - DELAVAN LAKE, WI



### AVERAGE LAKE ELEVATION - DELAVAN LAKE, WI



**DATA SUMMARY  
DELAVAN LAKE, WISCONSIN**

Month	Ice On Date	Ice Off Date	Air Temperature			Precipitation		Lake Water Temp.	Average Lake Elevation	Secchi Disc		Cubic Yards Harvested	
			Max.	Min.	Mean	Month (In Inches)	Yr to Date (In Inches)			Average (In Feet)	Maximum (In Feet)	Month	YTD
<b>2022</b>													
JAN	1/10/22		40	-18	11	0.63	0.63	-	927.72	-	-	-	-
FEB			49	-3	23	0.77	1.40	-	927.70	-	-	-	-
MAR		3/23/22	73	6	34	2.91	4.31	-	927.80	-	-	-	-
APR			81	24	52	5.05	9.36	42	927.88	20.0	20.0	387	387
MAY			91	33	62	2.42	11.78	62	927.90	12.7	20.0	2184	2571
JUN			98	47	72	2.21	13.99	74	927.87	9.7	13.0	1431	4002
JUL			90	52	71	2.98	16.97	79	927.68	8.7	10.0	1585	5587
AUG			92	52	72	4.28	21.25	79	927.60	6.6	9.0	305	5892
SEP			85	35	60	7.51	28.76	59	927.85	6.7	7.0	39	5931
OCT			78	29	54	1.67	30.43	-	927.79	-	-	-	-
NOV			75	9	42	1.23	31.66	51	927.77	12.3	15.0	-	-
DEC	12/19/22		56	-13	22	1.67	33.33	-	927.72	-	-	-	-
<b>2023</b>													
JAN			49	-14	18	1.67	1.67	-	927.71	-	-	-	-
FEB			51	-7	22	4.14	5.81	-	927.78	-	-	-	-
MAR			69	9	39	2.89	8.70	-	927.81	-	-	-	-
APR		3/10/23	82	26	54	3.87	12.57	49	927.83	8.0	9.0	855	855
MAY			91	35	63	1.45	14.02	62	927.85	21.8	38.0	1553	2408
JUN			92	43	67	1.22	15.24	70	927.73	9.6	17.0	1558	3966
JUL			92	53	72	3.67	18.91	75	927.68	6.0	8.0	1620	5586
AUG			97	44	71	1.88	20.79	76	927.83	7.3	10.0	854	6440
SEP			93	42	68	3.78	24.57	68	927.75	8.7	12.0	146	6586
OCT			86	24	55	3.01	27.58	-	927.89	-	-	-	-
NOV			68	10	39	1.01	28.59	-	927.84	-	-	-	-
DEC			56	13	34	2.13	30.72	-	927.75	-	30.0	-	-
<b>2024</b>													
JAN	1/15/24		38	-16	11	2.36	2.36	-	927.72	-	-	-	-
FEB		2/27/24	74	10	42	0.44	2.80	-	927.78	-	-	-	-
MAR			72	22	47	5.31	8.11	-	927.88	-	-	-	-
APR			82	28	55	3.65	11.76	-	927.90	-	-	-	-
MAY			87	44	65	5.93	17.69	67	927.95	18.2	28.0	466	466
JUN			94	47	70	4.73	22.42	71	927.94	7.6	15.0	1476	1942
JUL			91	50	71	7.14	29.56	84	927.95	6.0	6.0	2035	3977
AUG			95	48	71	2.93	32.49	75	927.86	7.0	7.0	1692	5669
SEP			91	42	66	2.51	35.00	77	927.80	8.8	10.0	1769	7438
OCT			84	32	58	0.60	35.60	66	927.74	7.3	12.0	590	8028
NOV			65	12	39	2.24	37.84	-	927.83	12	12	-	-
DEC			54	-1	26	0.75	38.59	-	927.85	-	-	-	-