

**DELAVAN LAKE SANITARY DISTRICT  
ADMINISTRATOR'S REPORT  
DECEMBER ACTIVITY 2023**

**ADMINISTRATION**

Lift Station #8 wet well repairs and motor mounts completed.

Barge sent to Aquarius for pontoon additions.

Shores of Delavan notified staff that development is not moving forward at this time.

Lift Station #2A WE Energies alterations to prepare the station to convert to a 3-phase WYE system is in progress.

Lift Station #5 preliminary designs are in progress and Erosion Control Permit is applied for.

Replacement trucks are ordered.

Staff researching 20-year-old mower replacement costs.

Charlie retired and is looking forward to some enjoyed free time after 22 years of service.

Ted Kasch's term is up and he plans to run again.

**SEWER SYSTEM OPERATIONS**

**Building Sewer Connections**

**New Connections for the Month - 0**

**Reconnections for the Month - 1**

**Disconnections for the Month - 0**

**Total Number of Structures Connected to Date - 3,127**

**Total ERU Count for the Month - 4,046**

**Operation and Maintenance**

**Average December Daily Wastewater Flow to WalCoMet - 450,363 gallons**

**Peak December Flow - 548,190 gallons**

**Diggers Requests Marked for the Month - 35**

**Emergency Call Outs - 2**

**Lateral Leaks**

**Sump Pump Discharges - 4**

**Current Lateral Leaks - 51**

**Completed Lateral Leak Orders - 5**

The following charts are attached: *Wastewater Flow comparison with Precipitation December, 2023*  
*Average Daily Wastewater Flow comparison with Peak Flow*  
*Precipitation comparison with "normal"*  
*Wastewater Flow comparison with "normal"*  
*Environmental Data Summary*  
*Daily Lake Elevation for December, 2023*  
*Lake Elevation comparison with "normal"*

### **Lake Monitoring/Lake Level**

**Precipitation Total for the Month – 2.13 inches**  
**Below Normal – .02 inches**  
**Ice On Date – December 19, 2022**  
**Ice Off Date – March 10, 2023**  
**Secchi Disc Reading Main Lake – 30.0 feet 12/14/2023**

*See attached Lake Elevation Graph and Chart.*

### **Lake Information**

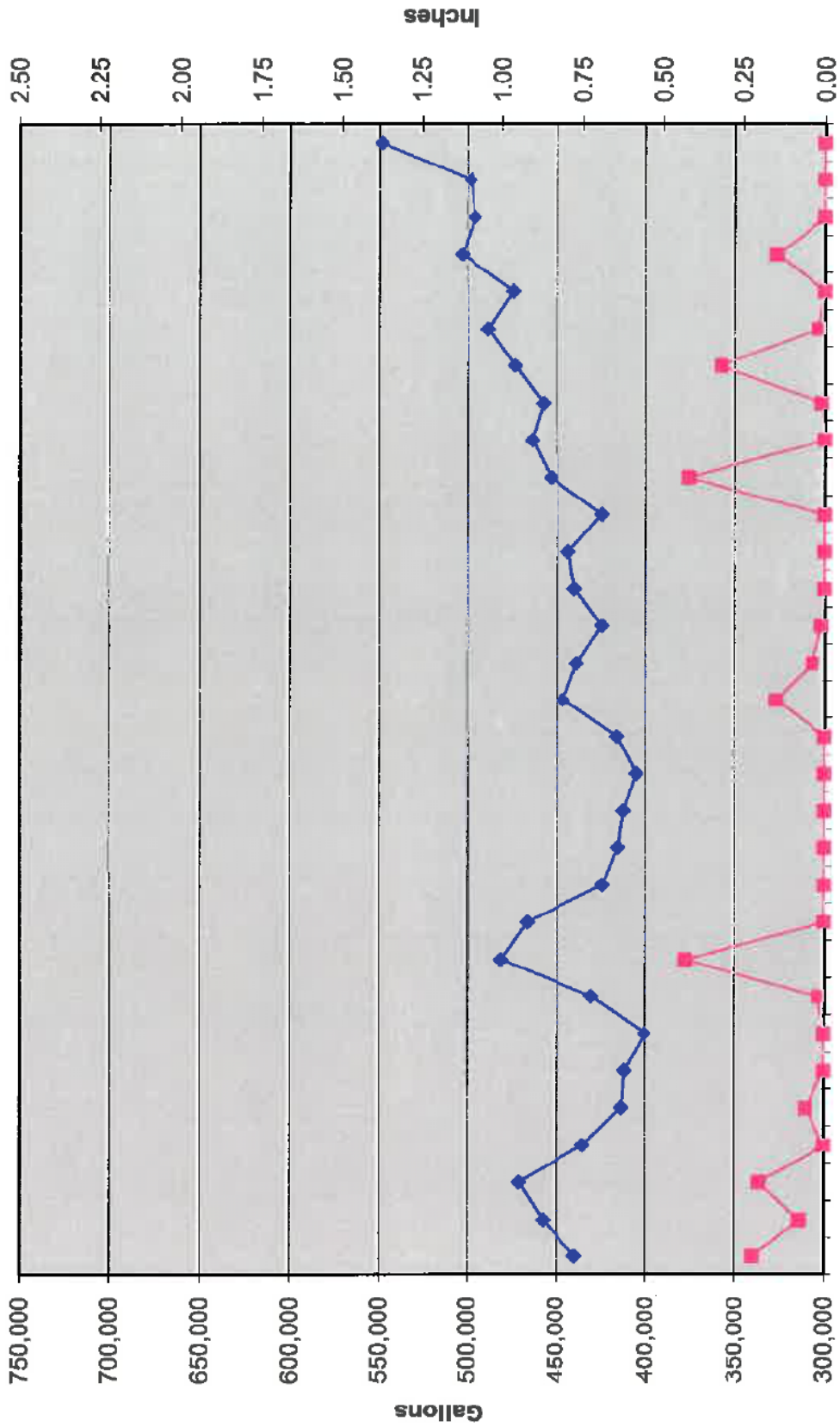
**DNR Lake Level Goal – 927.86 feet**  
**Average Lake Elevation – 927.75 feet**

### **Lake Committee**

The next meeting of the Lake Committee is scheduled for 7:00 P.M. on Wednesday, February 7, 2024 at the Town Hall.

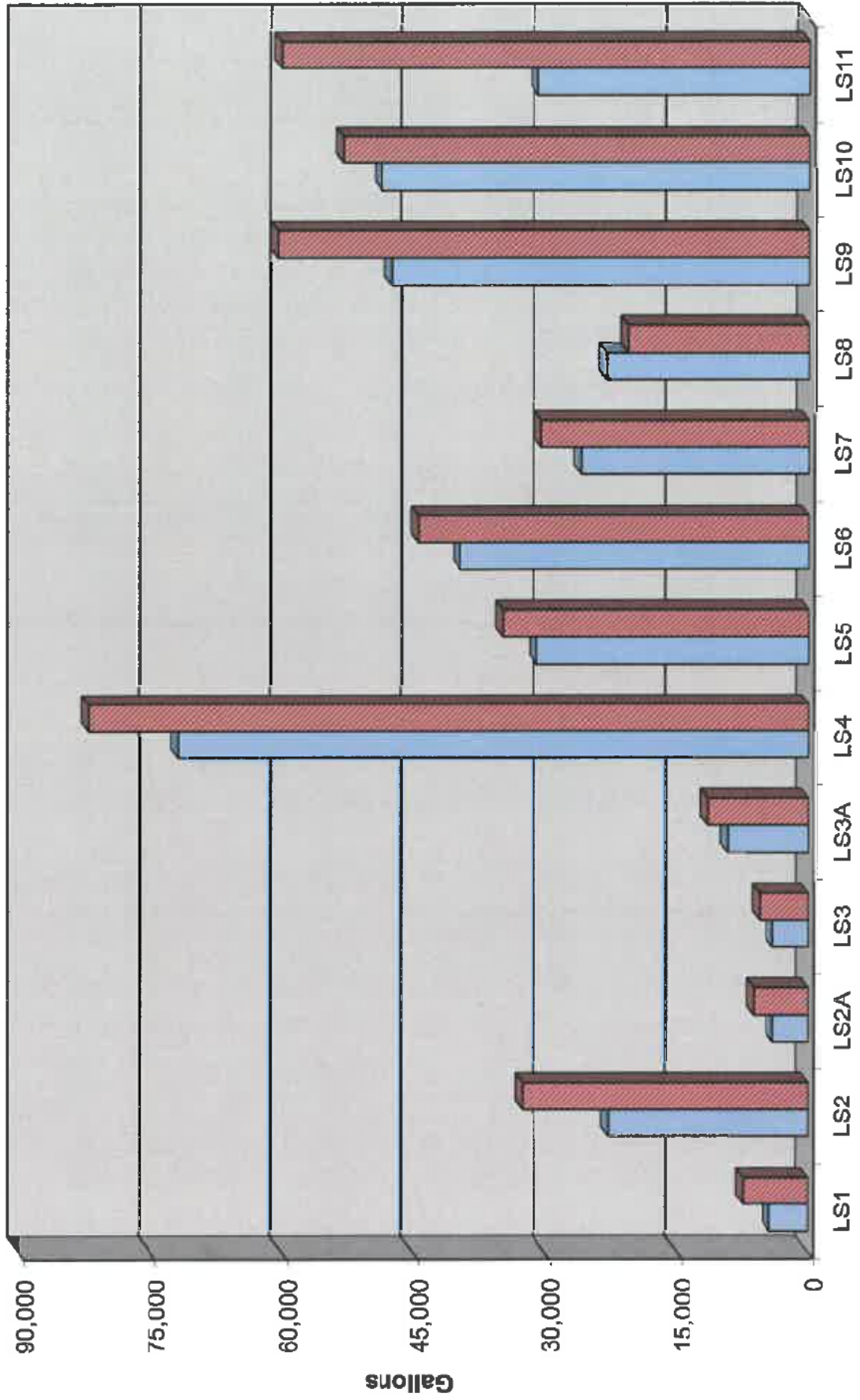
### **Attachments**

# Wastewater Flow/Precipitation - December, 2023

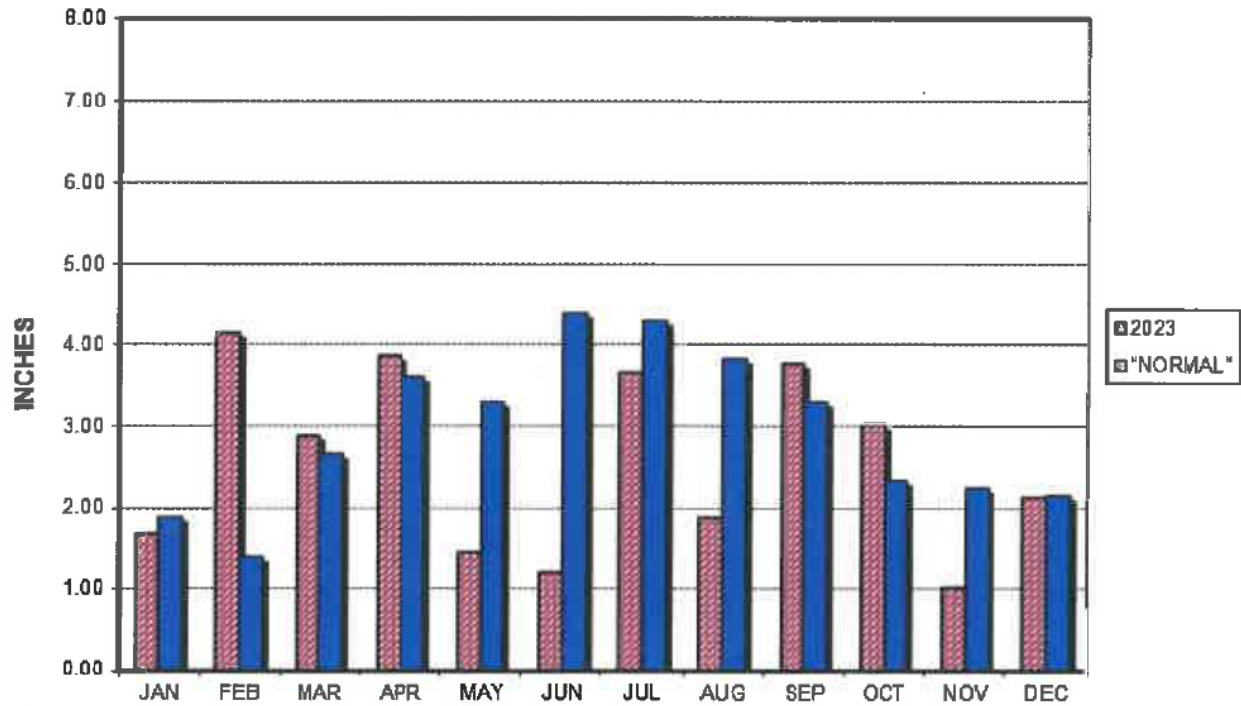


Average Daily Flow/Peak Flow by Area - December, 2023

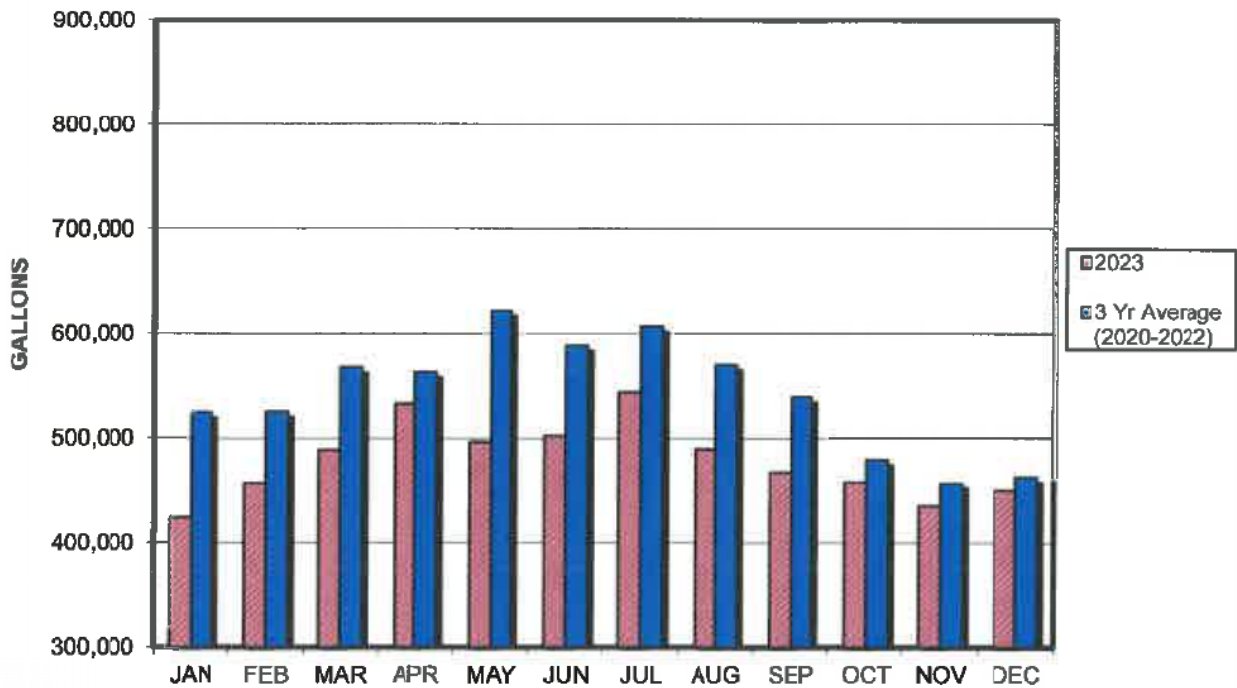
□ Average    ■ Peak



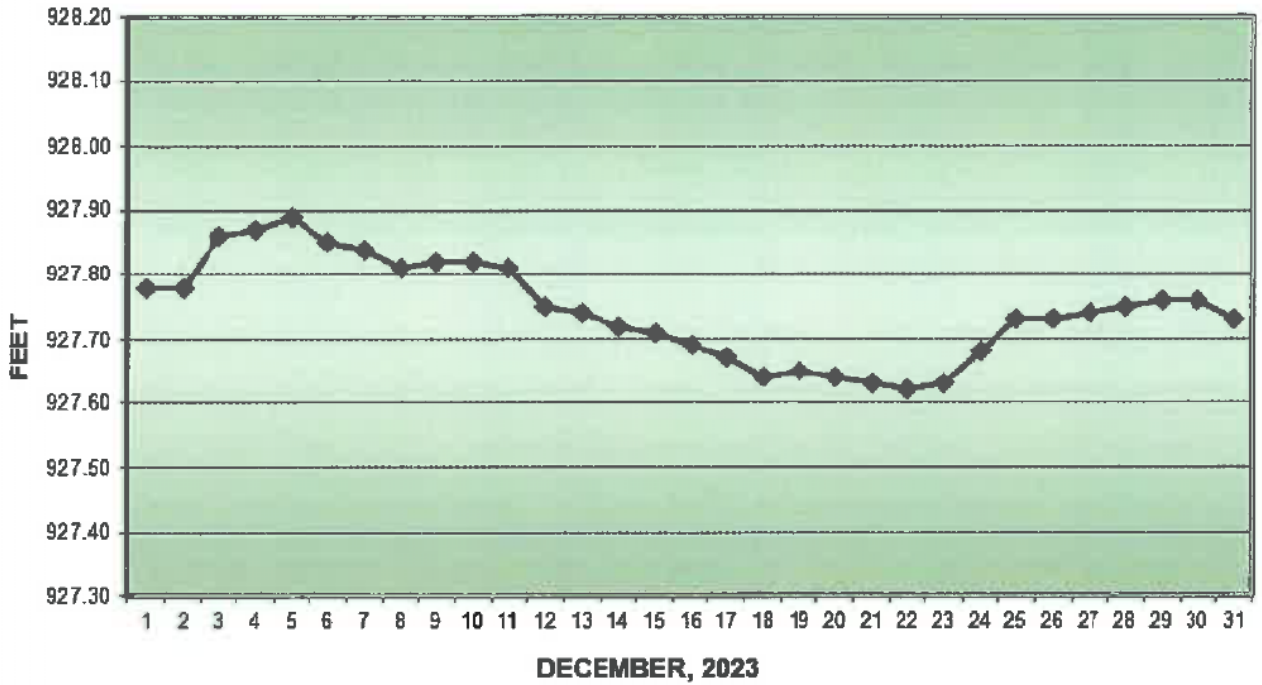
### PRECIPITATION - DELAVAN LAKE, WI



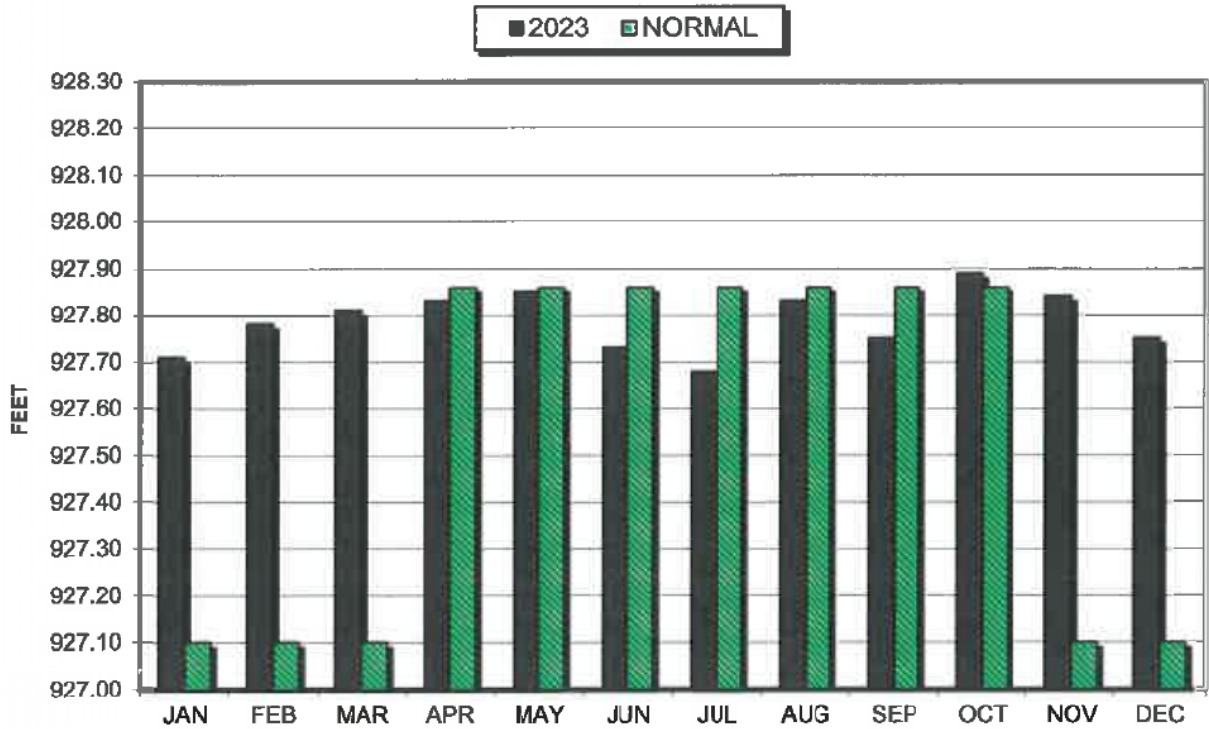
### AVERAGE WASTEWATER FLOWS



### LAKE ELEVATION - DELAVAN LAKE, WI



### AVERAGE LAKE ELEVATION - DELAVAN LAKE, WI



**DATA SUMMARY  
DELAVAN LAKE, WISCONSIN**

Month	Ice On Date	Ice Off Date	Air Temperature			Precipitation		Lake Water Temp.	Average Lake Elevation	Secchi Disc		Cubic Yards Harvested	
			Max.	Min.	Mean	Month (In Inches)	Yr to Date (In Inches)			Average (In Feet)	Maximum (In Feet)	Month	YTD
<b>2021</b>													
JAN	1/21/21		38	-6	22	1.39	1.39	-	927.58	-	-	-	-
FEB			47	-15	16	1.45	2.84	-	927.50	-	-	-	-
MAR		3/18/21	65	9	37	1.54	4.38	-	927.67	-	-	-	-
APR			84	21	53	0.76	5.14	46	927.75	8.7	9	-	-
MAY			88	30	59	1.52	6.66	67	927.87	18.3	32.0	547	547
JUN			95	46	71	2.58	9.24	76	927.84	10.1	19.5	2495	3042
JUL			92	52	72	2.87	12.11	78	927.89	10.2	14.0	1800	4842
AUG			93	51	72	3.96	16.07	77	927.78	9.0	12.0	1910	6752
SEP			89	45	67	1.33	17.40	66	927.53	7.8	11.0	585	7347
OCT			87	29	58	4.78	22.18	67	927.55	9.3	11.0	59	7406
NOV			66	15	41	0.46	22.64	51	927.57	9.7	13	-	-
DEC			64	7	35	1.81	24.45	-	927.61	-	-	-	-
<b>2022</b>													
JAN	1/10/22		40	-18	11	0.63	0.63	-	927.72	-	-	-	-
FEB			49	-3	23	0.77	1.40	-	927.70	-	-	-	-
MAR		3/23/22	73	6	34	2.91	4.31	-	927.80	-	-	-	-
APR			81	24	52	5.05	9.36	42	927.88	20.0	20.0	387	387
MAY			91	33	62	2.42	11.78	62	927.90	12.7	20.0	2184	2571
JUN			98	47	72	2.21	13.99	74	927.87	9.7	13.0	1431	4002
JUL			90	52	71	2.98	16.97	79	927.68	8.7	10.0	1585	5587
AUG			92	52	72	4.28	21.25	79	927.60	6.6	9.0	305	5892
SEP			85	35	60	7.51	28.76	59	927.85	6.7	7.0	39	5931
OCT			78	29	54	1.67	30.43	-	927.79	-	-	-	-
NOV			75	9	42	1.23	31.66	51	927.77	12.3	15.0	-	-
DEC	12/19/22		56	-13	22	1.67	33.33	-	927.72	-	-	-	-
<b>2023</b>													
JAN			49	-14	18	1.67	1.67	-	927.71	-	-	-	-
FEB			51	-7	22	4.14	5.81	-	927.78	-	-	-	-
MAR		3/10/23	69	9	39	2.89	8.70	-	927.81	-	-	-	-
APR			82	26	54	3.87	12.57	49	927.83	8.0	9.0	855	855
MAY			91	35	63	1.45	14.02	62	927.85	21.8	38.0	1553	2408
JUN			92	43	67	1.22	15.24	70	927.73	9.6	17.0	1558	3966
JUL			92	53	72	3.67	18.91	75	927.68	6.0	8.0	1620	5586
AUG			97	44	71	1.88	20.79	76	927.83	7.3	10.0	854	6440
SEP			93	42	68	3.78	24.57	68	927.75	8.7	12.0	146	6586
OCT			86	24	55	3.01	27.58	-	927.89	-	-	-	-
NOV			68	10	39	1.01	28.59	-	927.84	-	-	-	-
DEC			56	13	34	2.13	30.72	-	927.75	-	30.0	-	-