

**DELAVAN LAKE SANITARY DISTRICT
ADMINISTRATOR'S REPORT
JULY ACTIVITY 2017**

ADMINISTRATION

July 11th Delavan Lake had a significant rain event in the watershed area. Some areas registered 3.5 inches and other well over 7 inches of rain.

All three gates were 100% open. Lake reading at the dam with gates open was 929.74, so it is likely the main body exceeded 930.00 in elevation. There is not gauging station on the main body of the lake.

Area 10 had a citizen lift a manhole to drain the streets and yards and this caused much grief for lift station #10. This created unnecessary overtime it caused line blockages due to sticks, leaves, sediment and trash that built up in the manhole.

New water truck was added to the fleet to improve flushing and supplying water to the jetter truck.

SEWER SYSTEM OPERATIONS

Building Sewer Connections

New Connections for the Month - 1
Reconnections for the Month - 2
Disconnections for the Month - 1
Total Number of Structures Connected to Date - 3,097
Total ERU Count for the Month - 4,008

Operation and Maintenance

Average July Daily Wastewater Flow to WalCoMet - 802,922 gallons
Peak July Flow - 2,049,858 gallons
Diggers Requests Marked for the Month - 106
Emergency Call Outs - 2

The following charts are attached: *Wastewater Flow comparison with Precipitation for July, 2017*
Average Daily Wastewater Flow comparison with Peak Flow
Precipitation comparison with "normal"
Wastewater Flow comparison with "normal"
Environmental Data Summary
Daily Lake Elevation for July 2017
Lake Elevation comparison with "normal"

Lake Monitoring/Lake Level

Precipitation Total for the Month – 7.18 inches

Above Normal – 2.88 inches

Ice Off Date – February 24, 2017

Secchi Disc Reading Main Lake – 6 feet on 7/26/17

See attached Lake Elevation Graph and Chart.

Lake Information

DNR Lake Level Goal – 927.86 feet

Average Lake Elevation – 928.22 feet

Number of Dam Inspections – 31

See attached Gate Setting Chart.

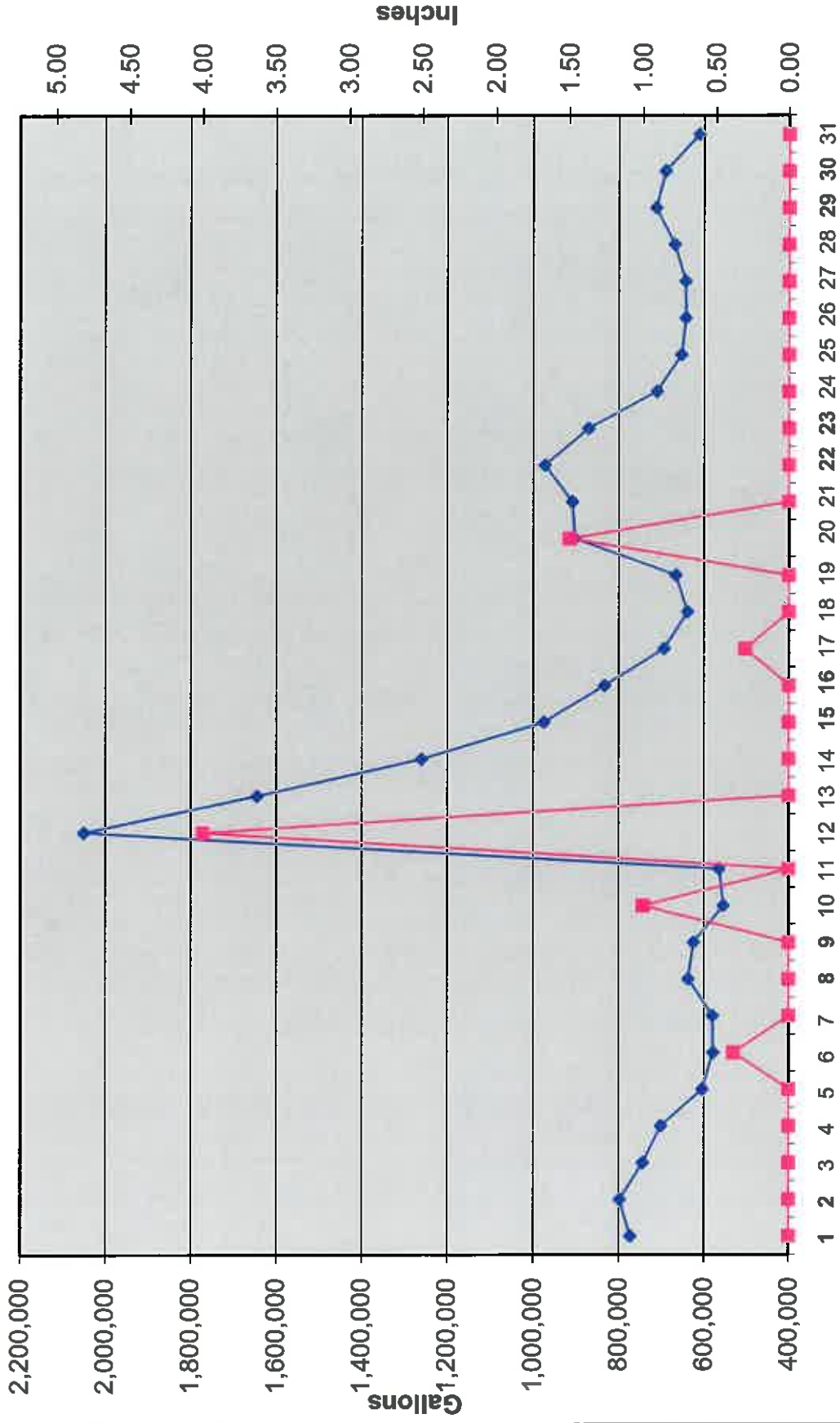
Lake Committee

The next meeting of the Lake Committee is scheduled for 7:00 P.M. on Wednesday, September 6th, 2017 at the Town Hall.

Attachments

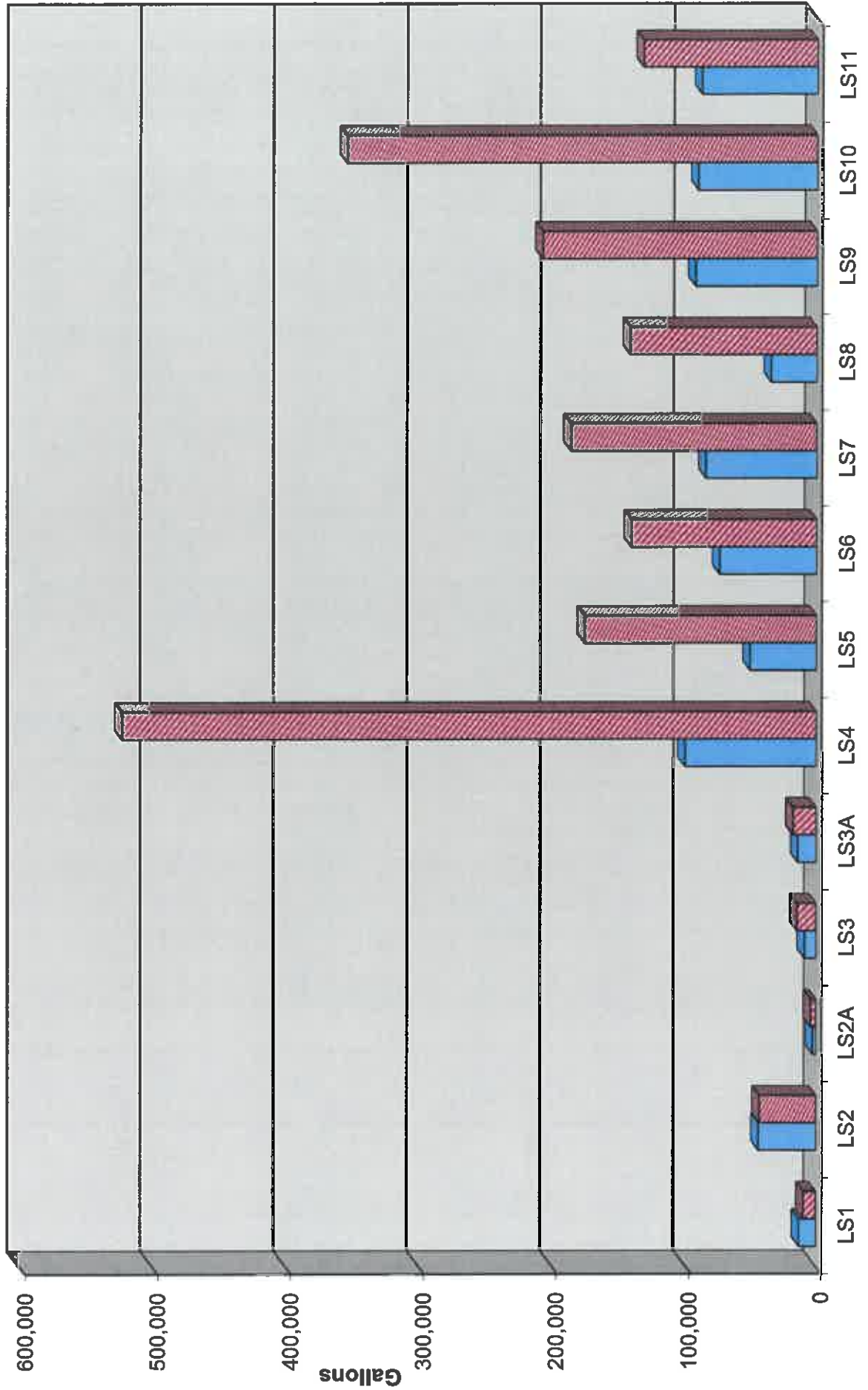
Wastewater Flow/Precipitation - July, 2017

◆ Wastewater Flow ■ Precipitation

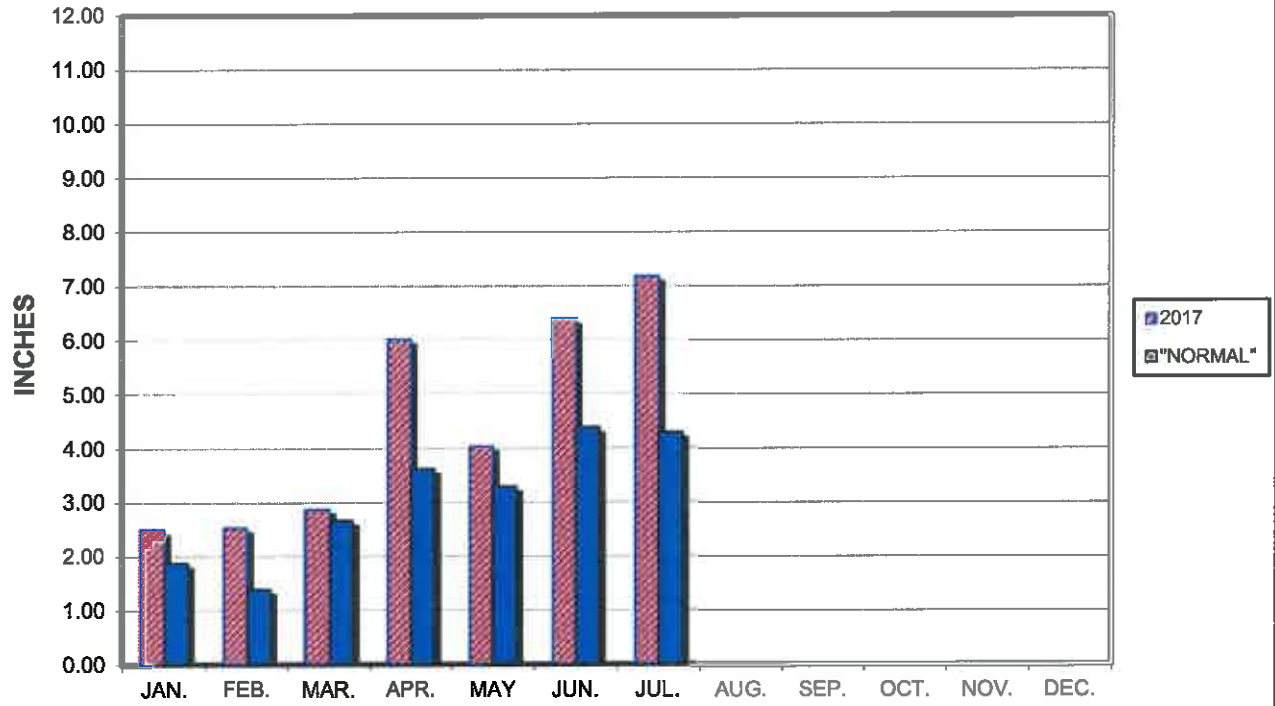


Average Daily Flow/Peak Flow by Area - July, 2017

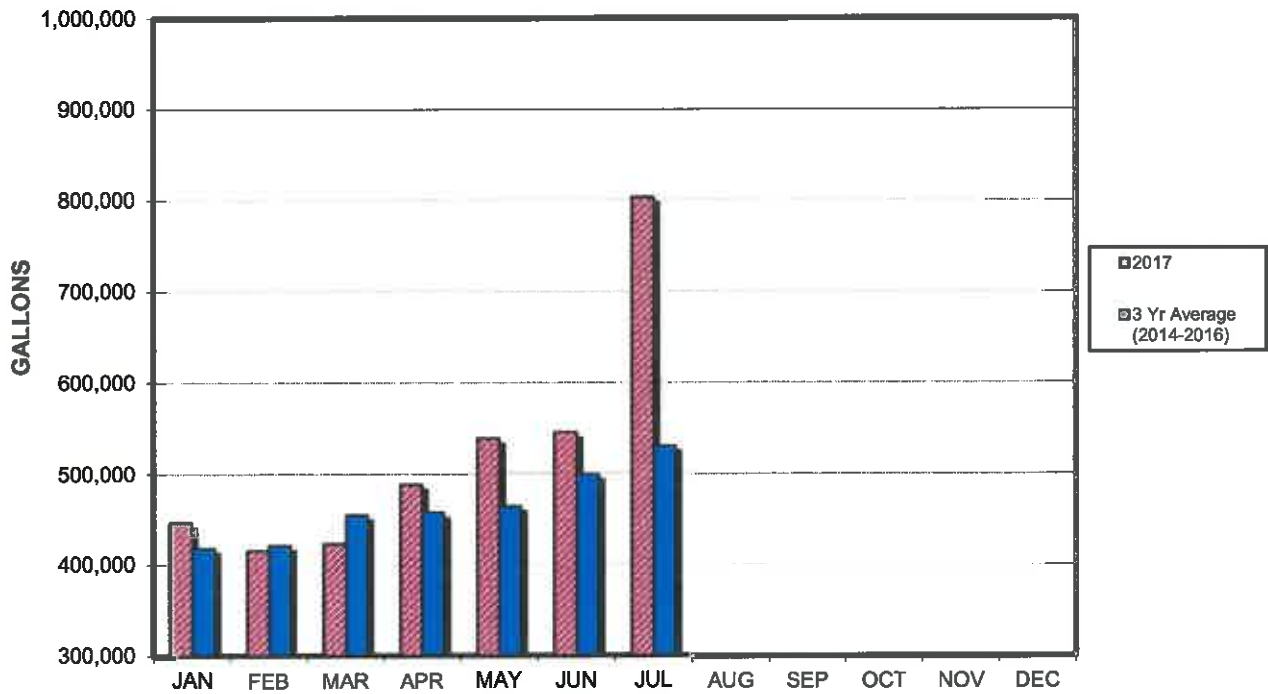
■ Average ■ Peak



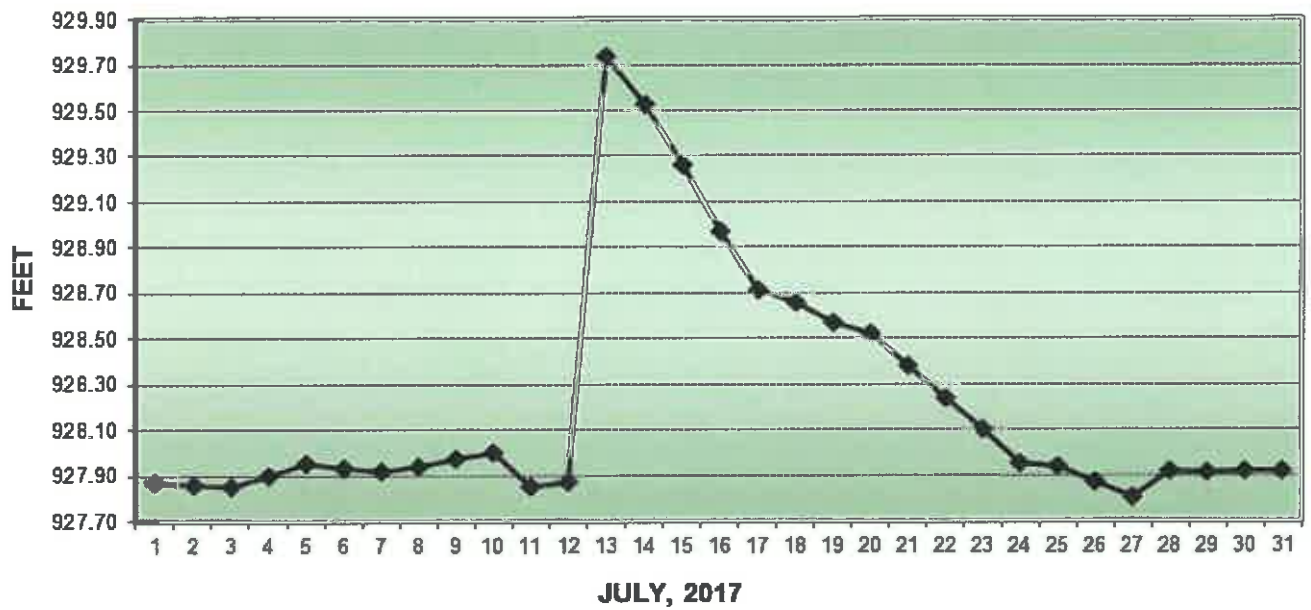
PRECIPITATION - DELAVAN LAKE, WI



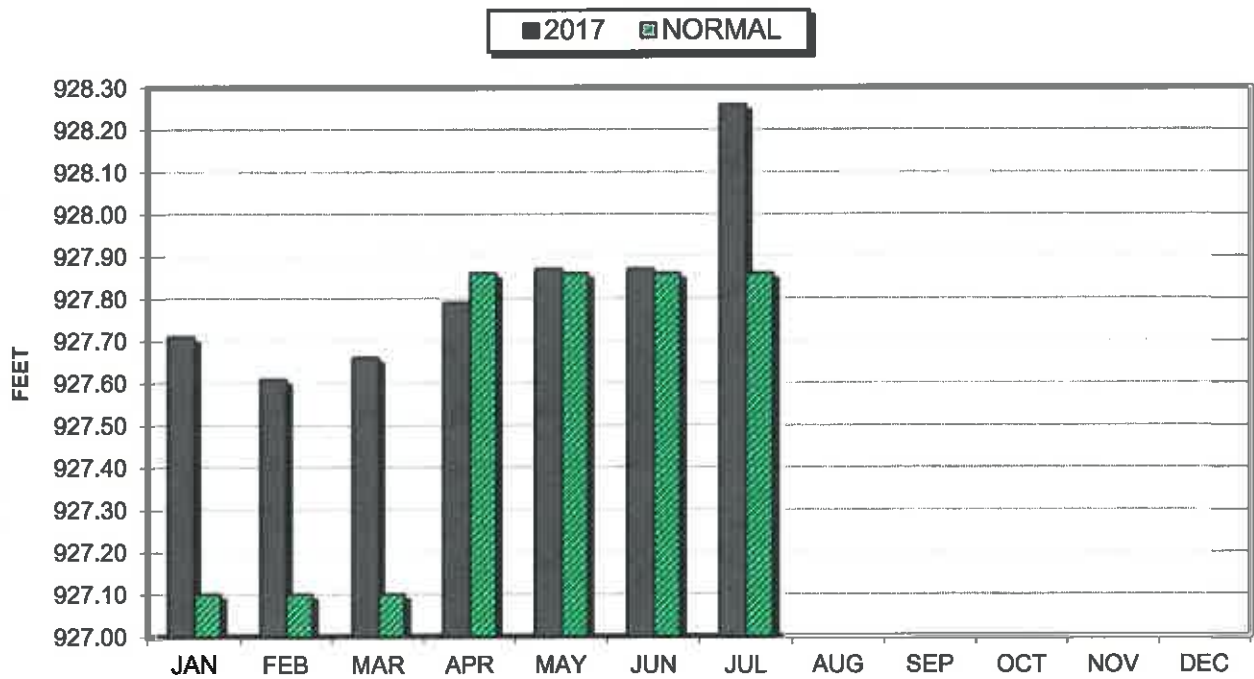
AVERAGE WASTEWATER FLOWS



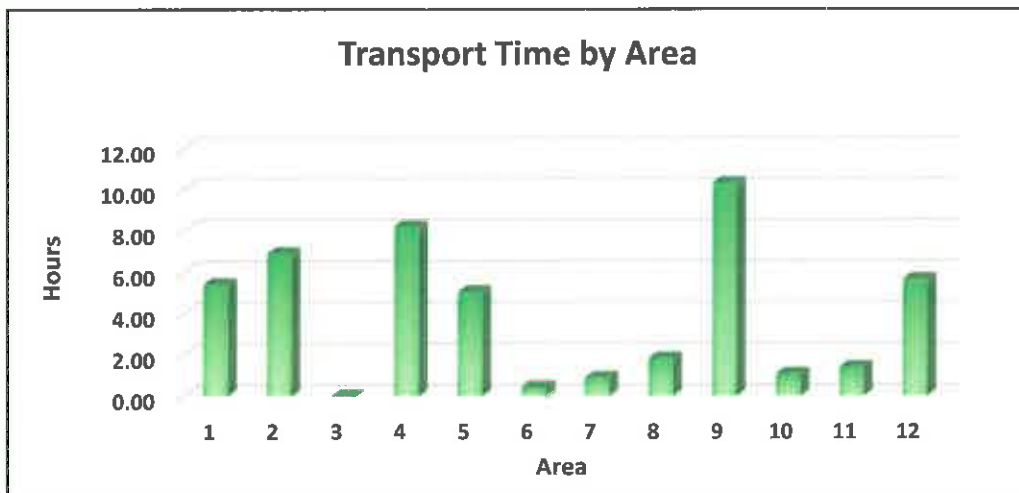
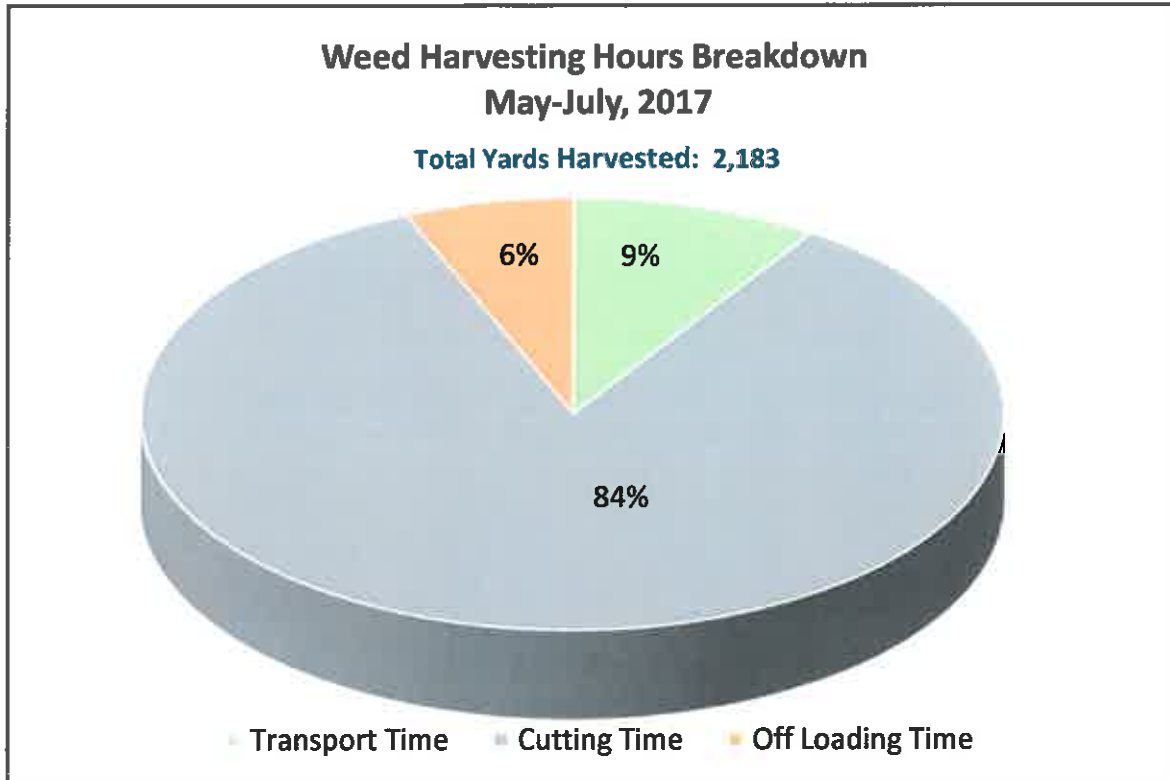
LAKE ELEVATION - DELAVAN LAKE, WI



AVERAGE LAKE ELEVATION - DELAVAN LAKE, WI



2017 Weed Harvesting Summary



Month	Yards	(Hundreths of Hour)		
		Cut Times	Transport Times	Off Load Times
May	296	75.85	9.09	0.33
Jun	1,047	200.5	24.87	18.97
July	840	153.7	13.42	13.14
Aug				
Sep				
Oct				
Total	2,183	430.05	47.38	32.44