

**DELAVAN LAKE SANITARY DISTRICT
ADMINISTRATOR'S REPORT
JULY ACTIVITY 2022**

ADMINISTRATION

Lift Station 4 work in progress.

Harvester was retrofitted with a new mesh as an experiment to better collect duck weed and algae and so far during the one week of use it has been a success.

IGA with City of Delavan regarding Lake Lawn system is getting all signatures as it has been approved.

Lift Station 3 generator charger was replaced, Lift Station 7 transformer in underground pit was replaced.

SCADA call out system needed updates and new apps for alerting staff.

Operators pursued CDL license changes and tests, and all have passed.

Rain is indicating below normal pattern, and this impacts lake levels.

SEWER SYSTEM OPERATIONS

Building Sewer Connections

New Connections for the Month - 0

Reconnections for the Month - 1

Disconnections for the Month - 0

Total Number of Structures Connected to Date - 3,114

Total ERU Count for the Month - 4,032

Operation and Maintenance

Average July Daily Wastewater Flow to WalCoMet - 525,665 gallons

Peak July Flow - 664,272 gallons

Diggers Requests Marked for the Month - 91

Emergency Call Outs - 2

Lateral Leaks

Sump Pump Discharges - 4

Current Lateral Leaks - 51

Completed Lateral Leak Orders - 5

The following charts are attached: *Wastewater Flow comparison with Precipitation July, 2022*
Average Daily Wastewater Flow comparison with Peak Flow
Precipitation comparison with "normal"
Wastewater Flow comparison with "normal"
Environmental Data Summary
Daily Lake Elevation for July, 2022
Lake Elevation comparison with "normal"

Lake Monitoring/Lake Level

Precipitation Total for the Month – 2.98 inches
Below Normal – 1.32 inches
Ice On Date – January 10, 2022
Ice Off Date – March 23, 2022
Secchi Disc Reading Main Lake – 8.5 feet on 7/18/2022

See attached Lake Elevation Graph and Chart.

Lake Information

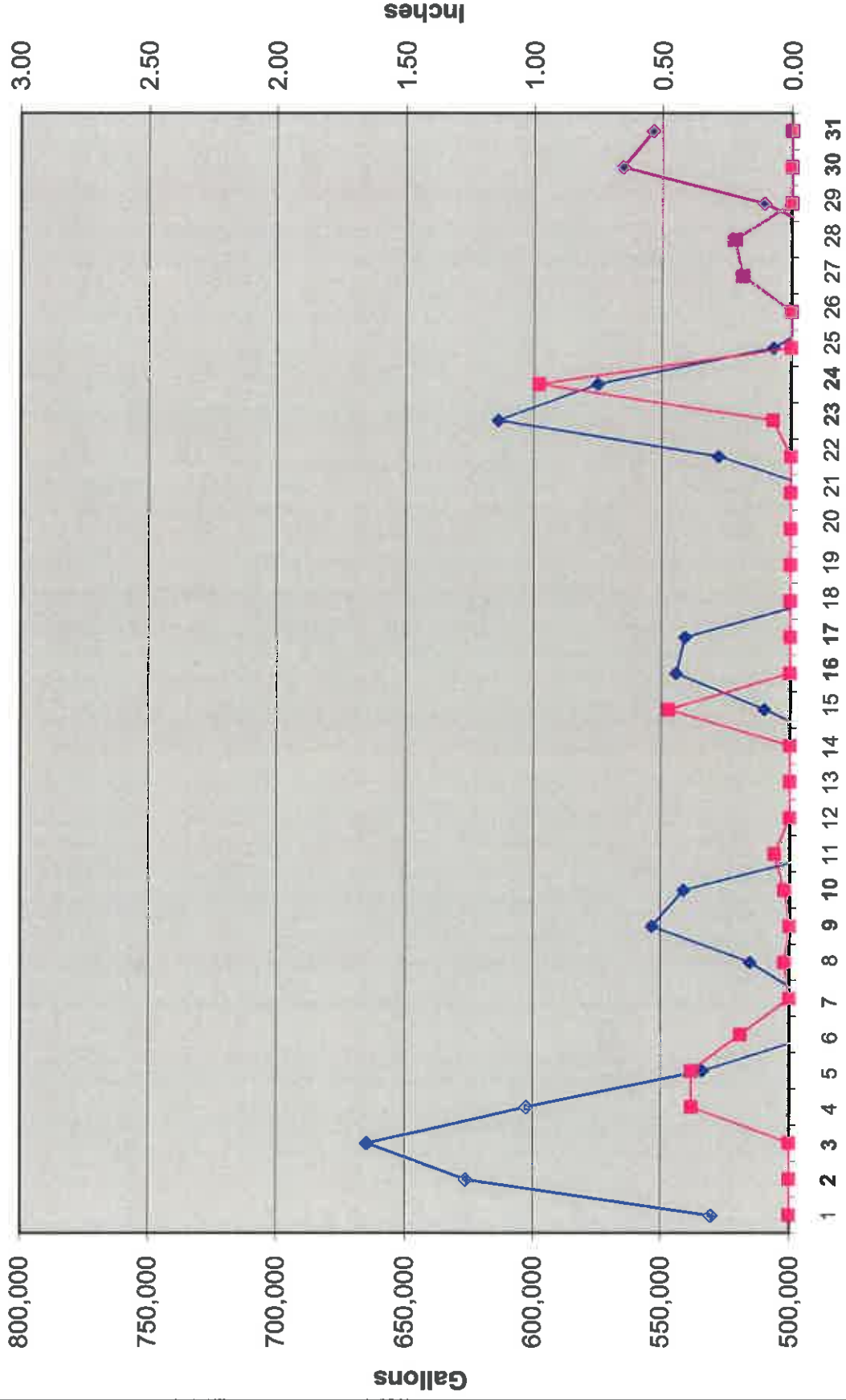
DNR Lake Level Goal – 927.86 feet
Average Lake Elevation – 927.68 feet

Lake Committee

The next meeting of the Lake Committee is scheduled for 7:00 P.M. on Wednesday, September 7, 2022 at the Town Hall.

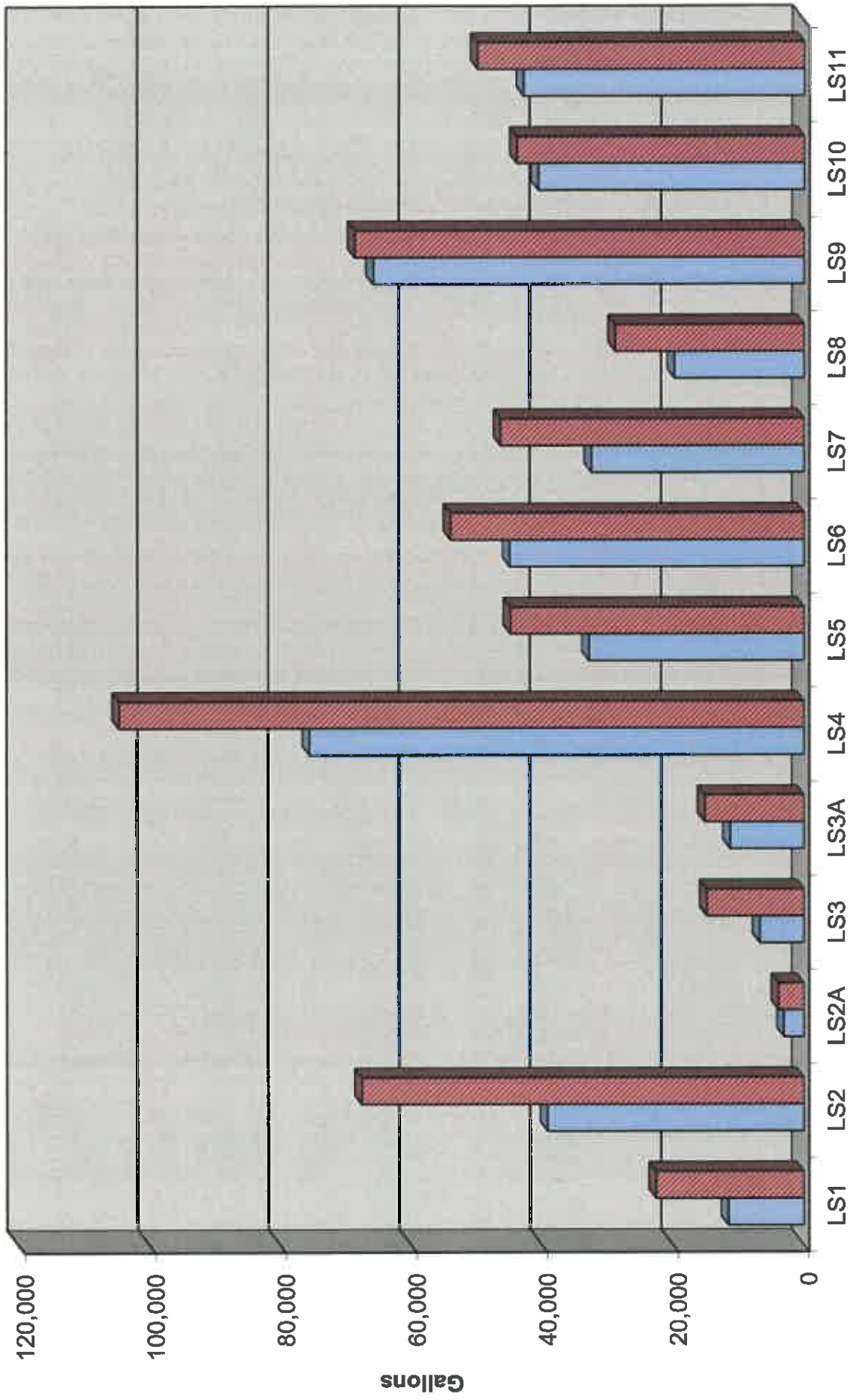
Attachments

Wastewater Flow/Precipitation - July, 2022

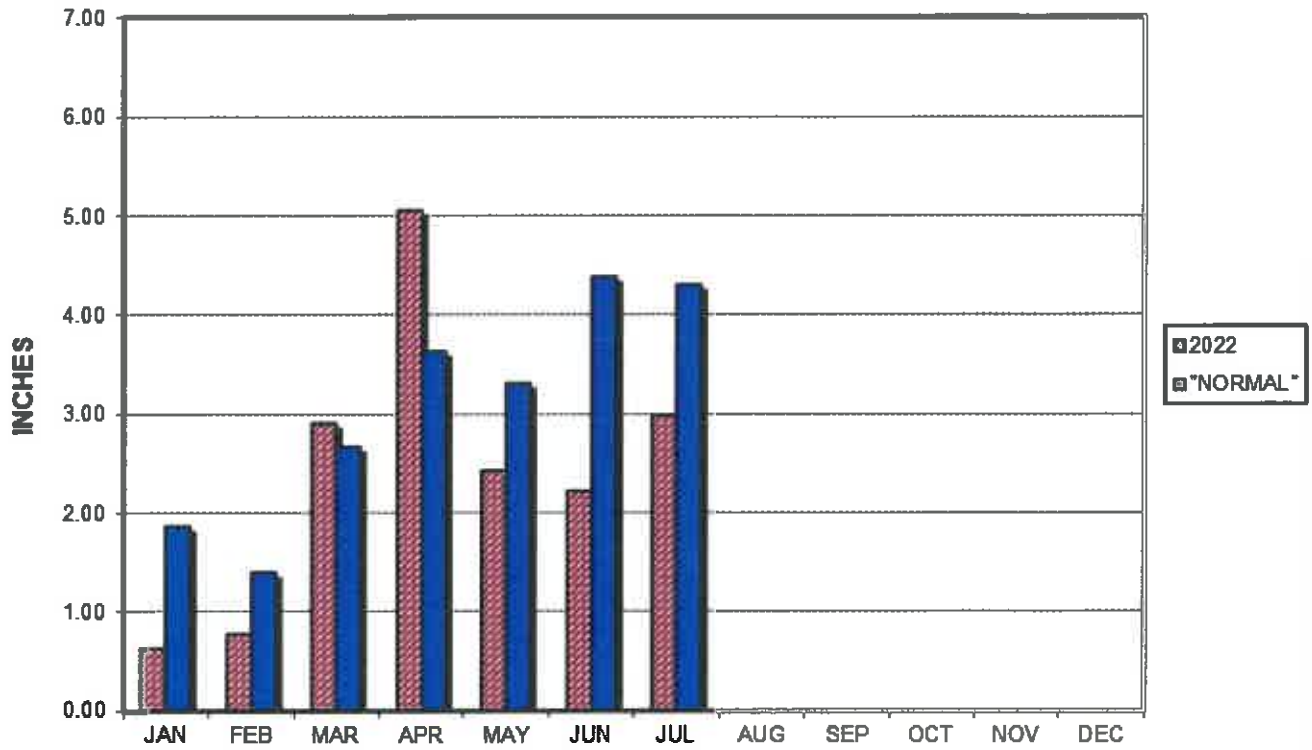


Average Daily Flow/Peak Flow by Area - July, 2022

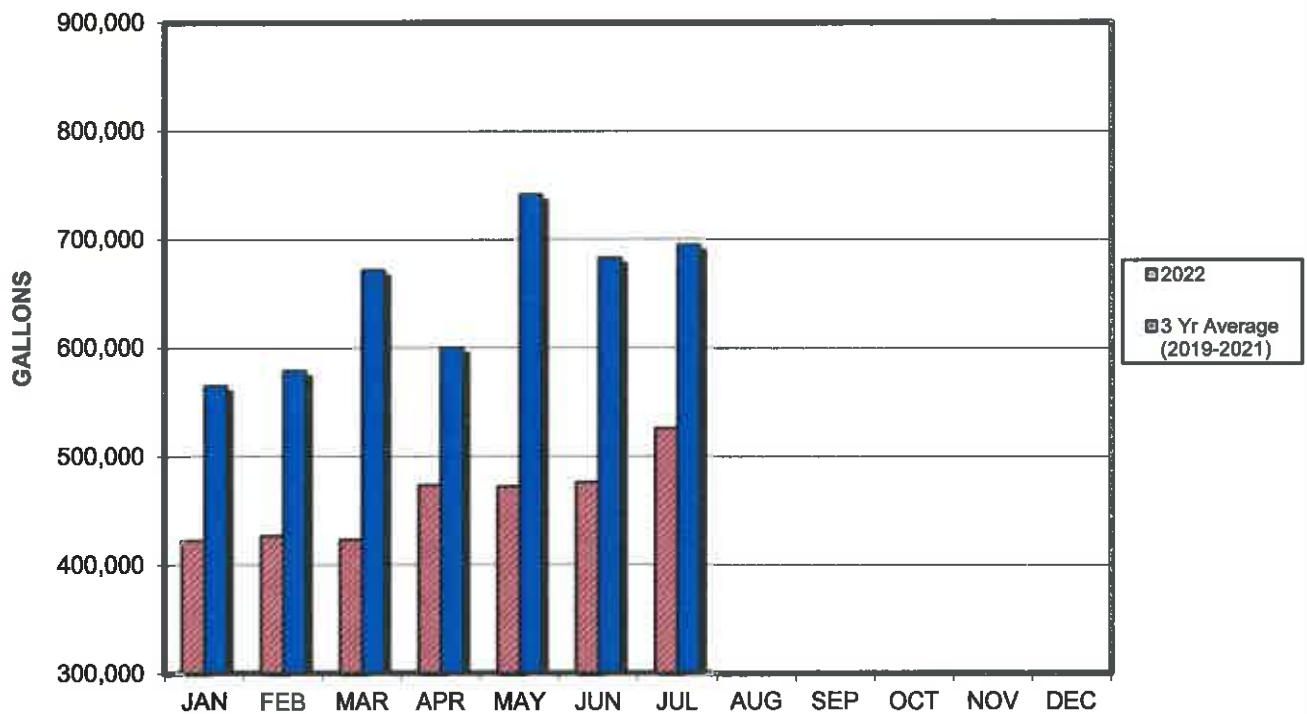
Average Peak



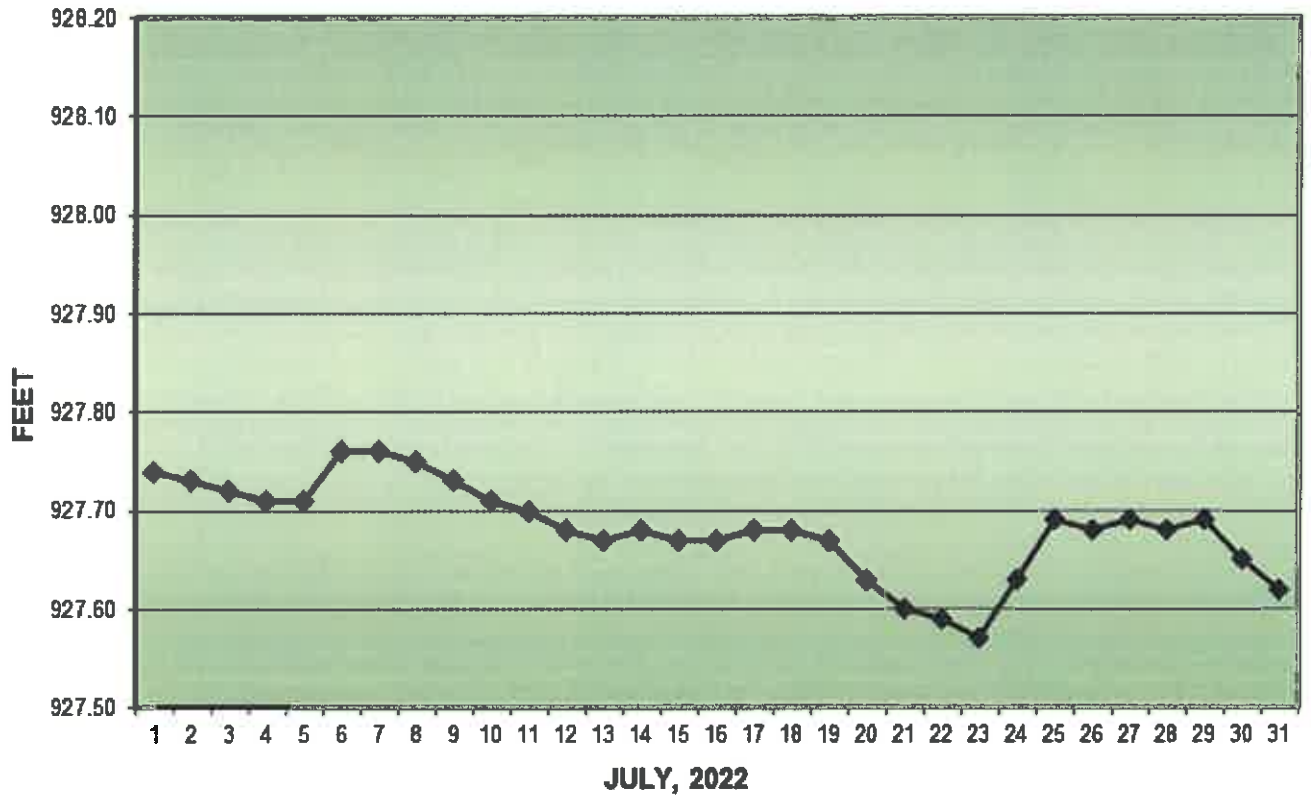
PRECIPITATION - DELAVAN LAKE, WI



AVERAGE WASTEWATER FLOWS



LAKE ELEVATION - DELAVAN LAKE, WI



AVERAGE LAKE ELEVATION - DELAVAN LAKE, WI

