

**DELAVAN LAKE SANITARY DISTRICT  
ADMINISTRATOR'S REPORT  
JUNE ACTIVITY 2021**

**ADMINISTRATION**

LS#3A rehab project is complete with punch list items only. Sodded grass pavers look nice.

Dredging program is still in evaluation stages and waiting for permits from the DNR.

Meeting is set-up with Ravenswood to educate member of the future final phase of rehabbing LS #4.

Harvesting weeds is at a record pace.

Property west of Highway 50 and East of the Lake Lawn Airport petitioned for annexation into the City of Delavan.

Diggers still at a hot pace as homes get built or torn down and re-built.

**SEWER SYSTEM OPERATIONS**

**Building Sewer Connections**

**New Connections for the Month - 0**

**Reconnections for the Month - 4**

**Disconnections for the Month - 1**

**Total Number of Structures Connected to Date - 3,111**

**Total ERU Count for the Month - 4,025**

**Operation and Maintenance**

**Average June Daily Wastewater Flow to WalCoMet - 513,320 gallons**

**Peak June Flow - 621,612 gallons**

**Diggers Requests Marked for the Month - 117**

**Emergency Call Outs - 4**

**Lateral Leaks**

**Sump Pump Discharges - 4**

**Current Lateral Leaks - 51**

**Completed Lateral Leak Orders - 3**

The following charts are attached: *Wastewater Flow comparison with Precipitation for June, 2021*

*Average Daily Wastewater Flow comparison with Peak Flow*

*Precipitation comparison with "normal"*

*Wastewater Flow comparison with "normal"*

*Environmental Data Summary*

*Daily Lake Elevation for June, 2021*

*Lake Elevation comparison with "normal"*

## **Lake Monitoring/Lake Level**

**Precipitation Total for the Month – 2.58 inches**

**Below Normal – 1.80 inches**

**Ice On Date – January 21, 2021**

**Ice Off Date – March 18, 2021**

**Secchi Disc Reading Main Lake – 7.0 feet on 6/15/2021**

*See attached Lake Elevation Graph and Chart.*

## **Lake Information**

**DNR Lake Level Goal – 927.86 feet**

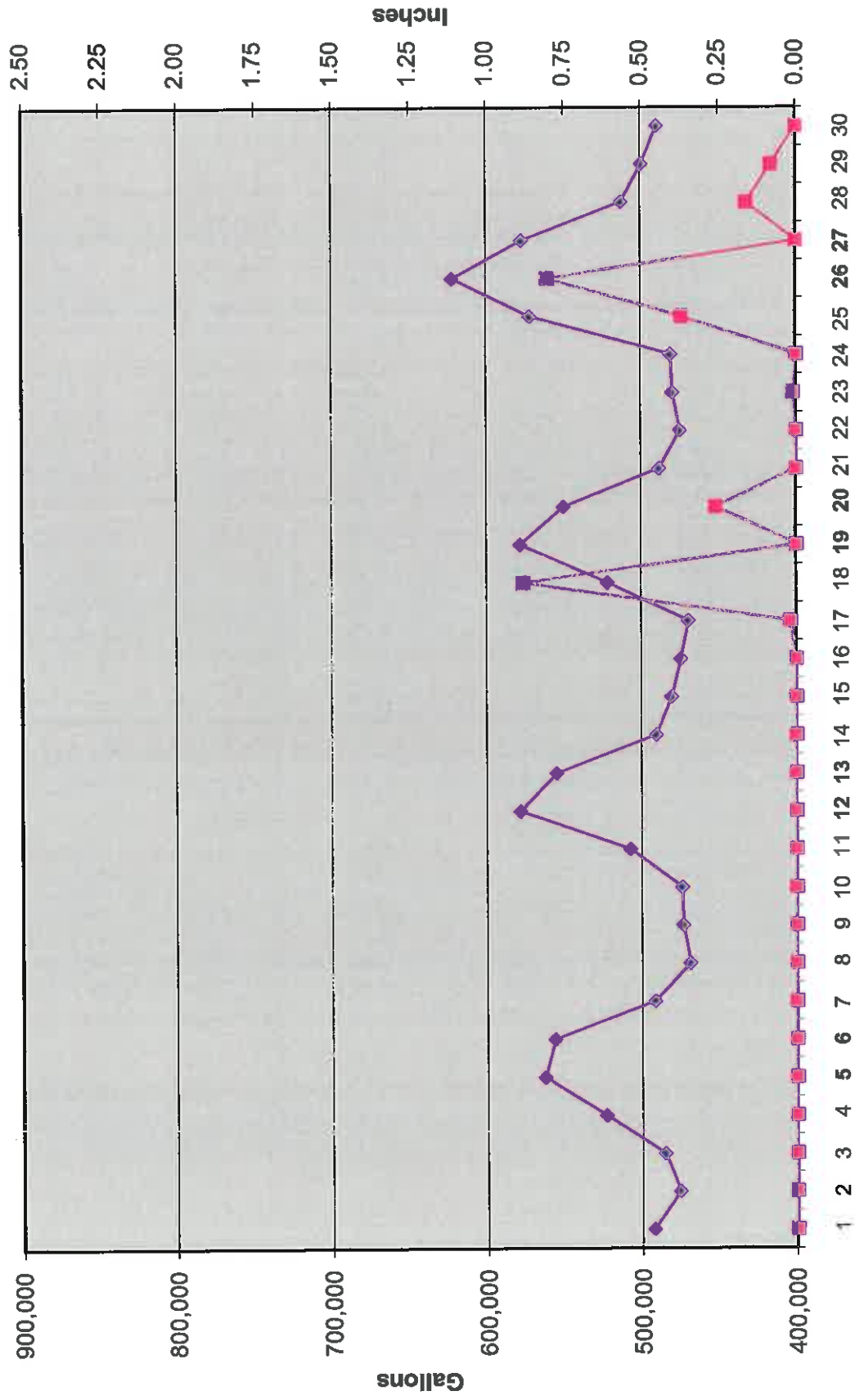
**Average Lake Elevation – 927.87 feet**

## **Lake Committee**

The next meeting of the Lake Committee is scheduled for 7:00 P.M. on Wednesday, August 4, 2021 at the Town Hall.

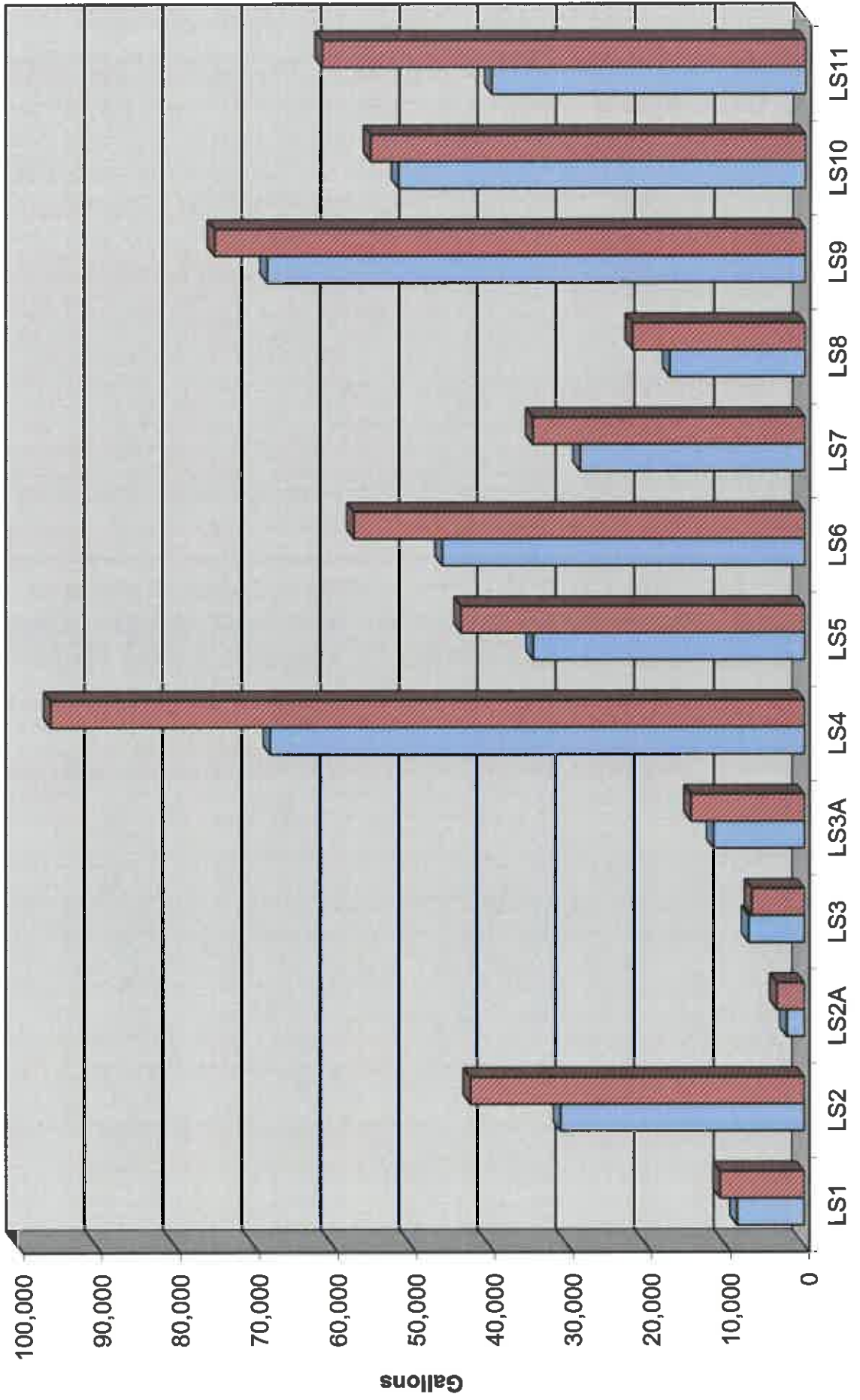
## **Attachments**

### Wastewater Flow/Precipitation - June, 2021

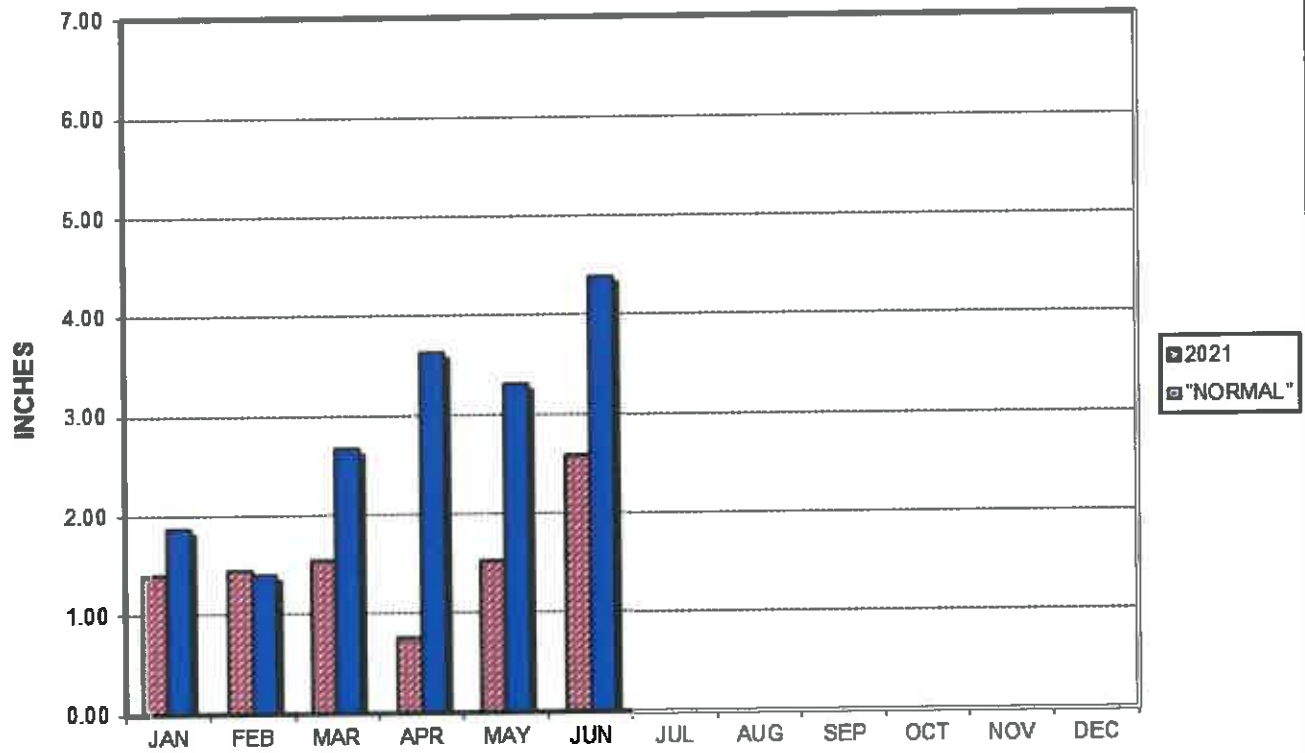


Average Daily Flow/Peak Flow by Area - June, 2021

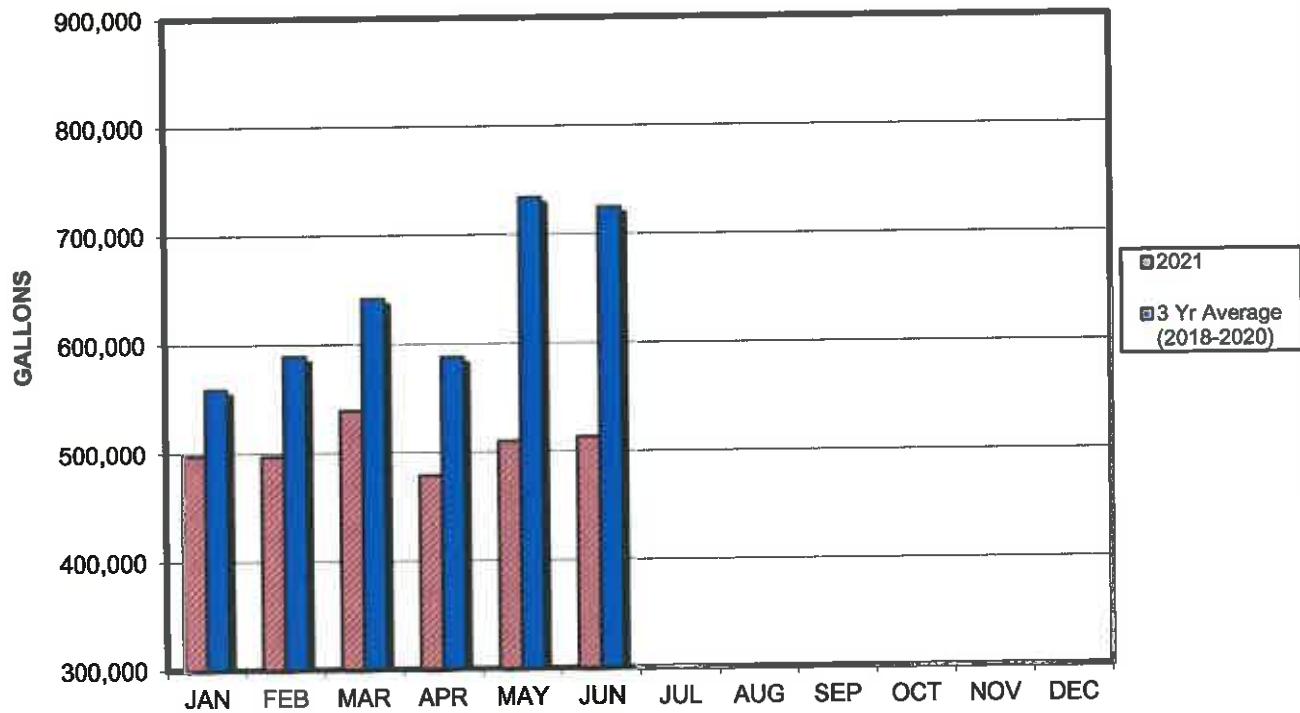
Average Peak



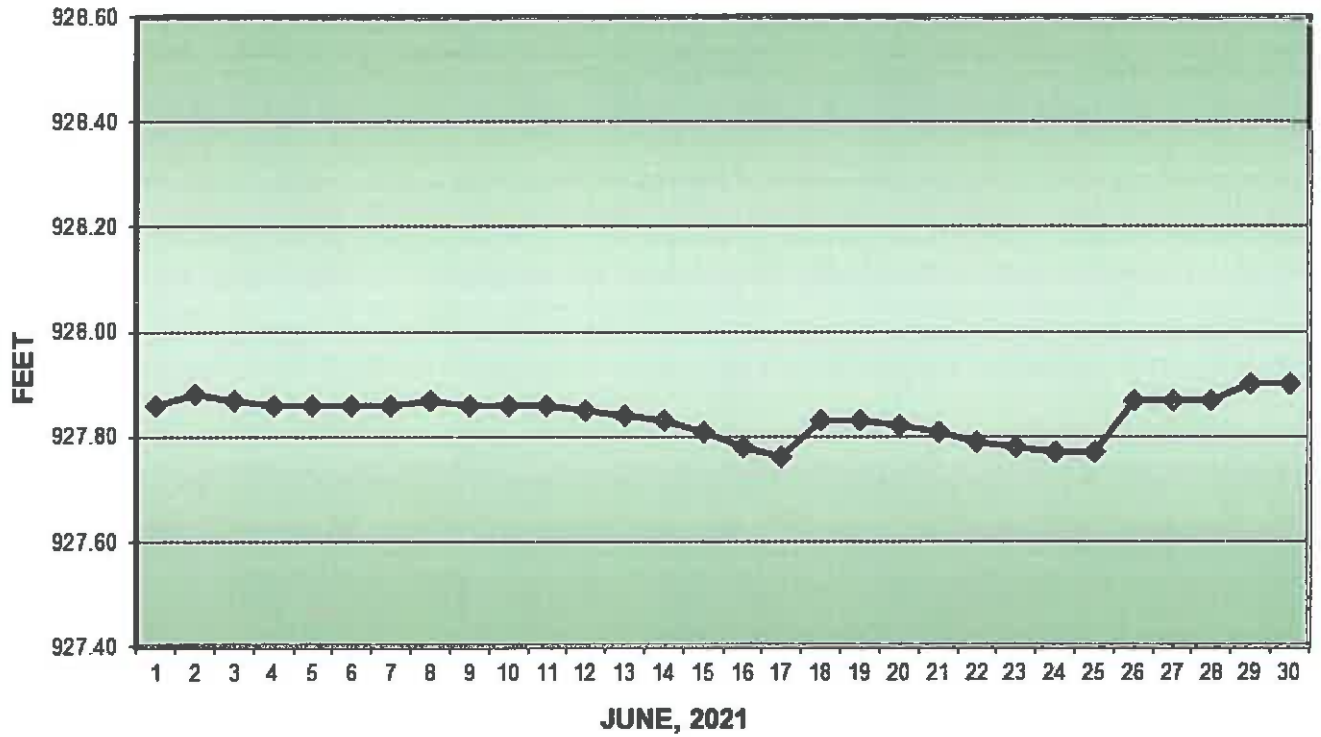
### PRECIPITATION - DELAVAN LAKE, WI



### AVERAGE WASTEWATER FLOWS



### LAKE ELEVATION - DELAVAN LAKE, WI



### AVERAGE LAKE ELEVATION - DELAVAN LAKE, WI

