

MEMO

TO: Town of Delavan Lake Committee
FROM: Delavan Lake Sanitary District
RE: DLSD Lake Management Activities for December
DATE: January 3, 2017 12/30/16

LAKE MONITORING RECORDS

December Precipitation - 1.16 inches
Number of Run-off events - 0
Precipitation Year-to-date - 31.31 inches

LAKE LEVEL

DNR Lake Elevation Expectations - 927.86 feet - Lake will be lowered about 0.20+/-
for winter ice and spring run-off.
Average lake elevation - 927.76 feet

LAKE MANAGEMENT PROGRAM

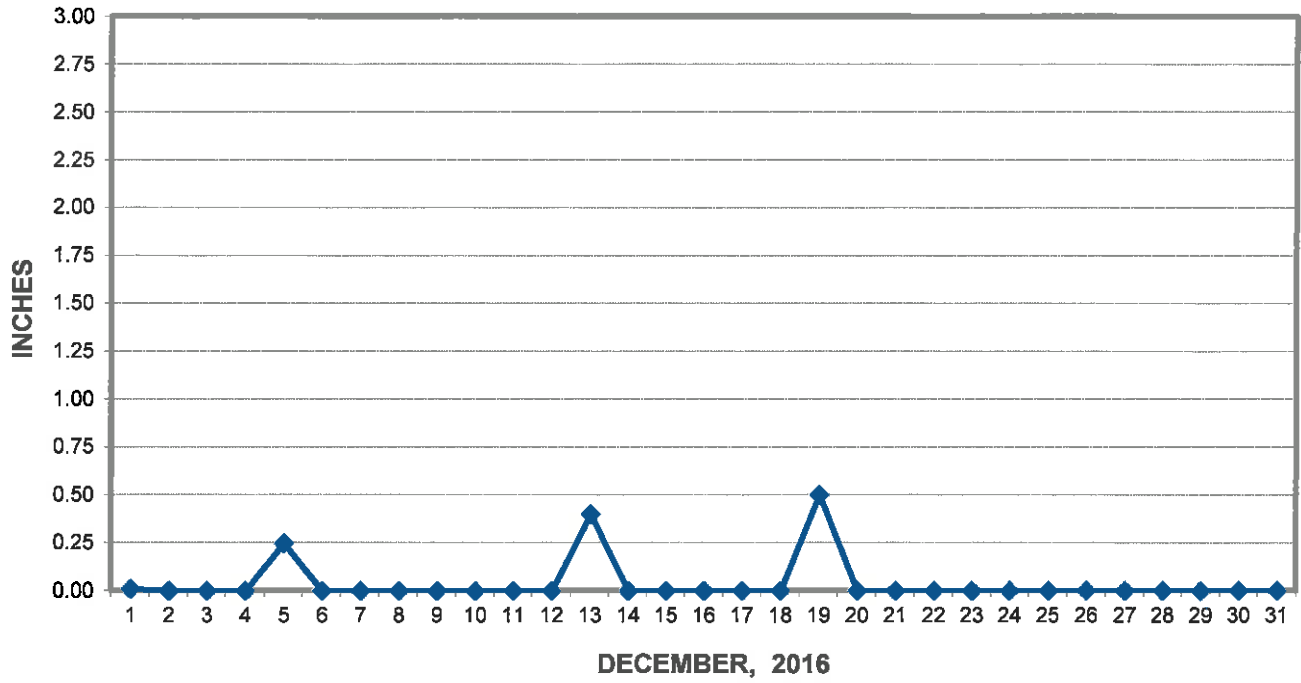
Gate #3 on the Dam had a malfunction and a contractor has been requested to service the gate since it is jammed in an open position.

Winter repairs and maintenance on harvesters is underway.

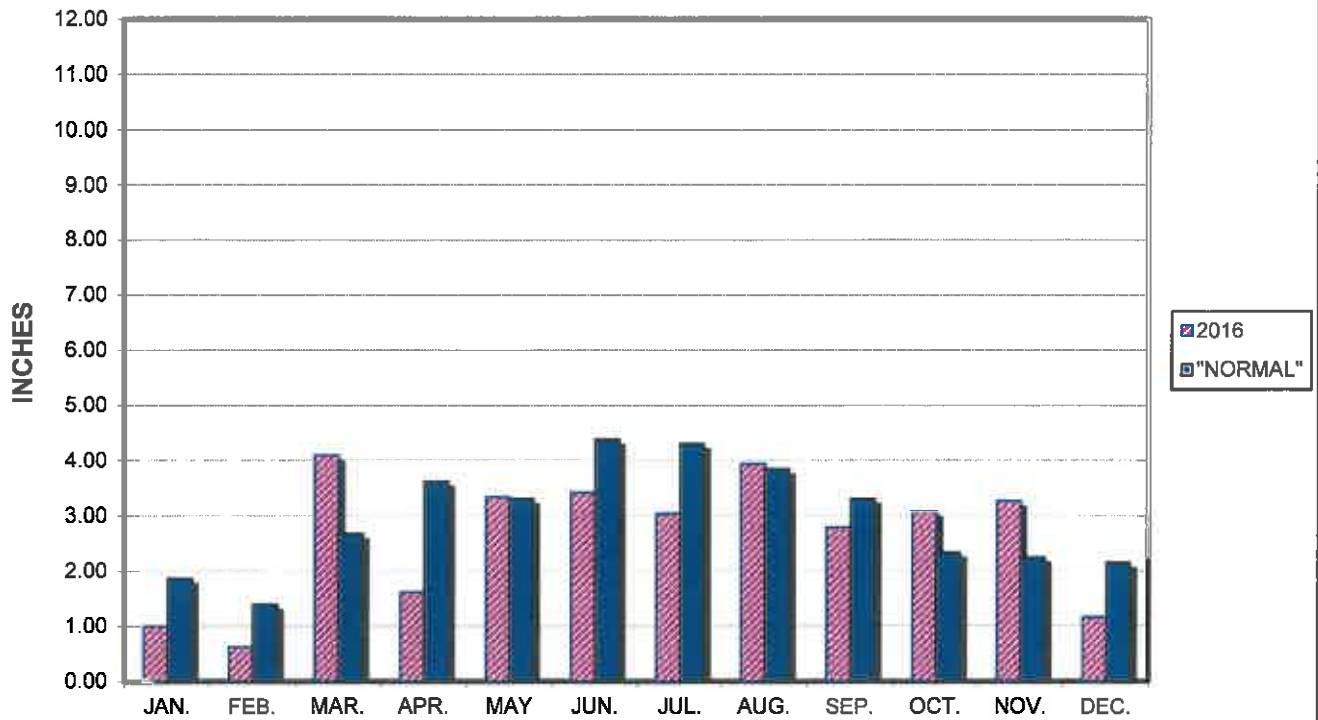
Harvester presentation for a grant to purchase new is schedule for January 10th, 2017

Encl.: (3)

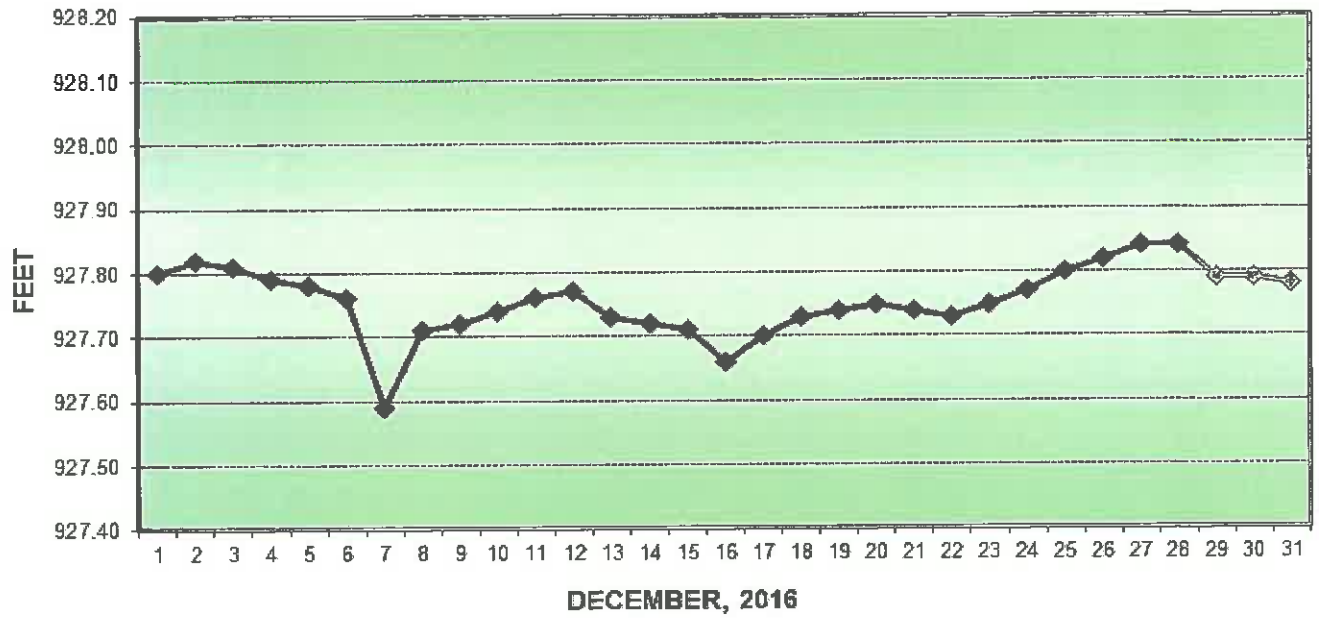
PRECIPITATION - DELAVAN LAKE, WI



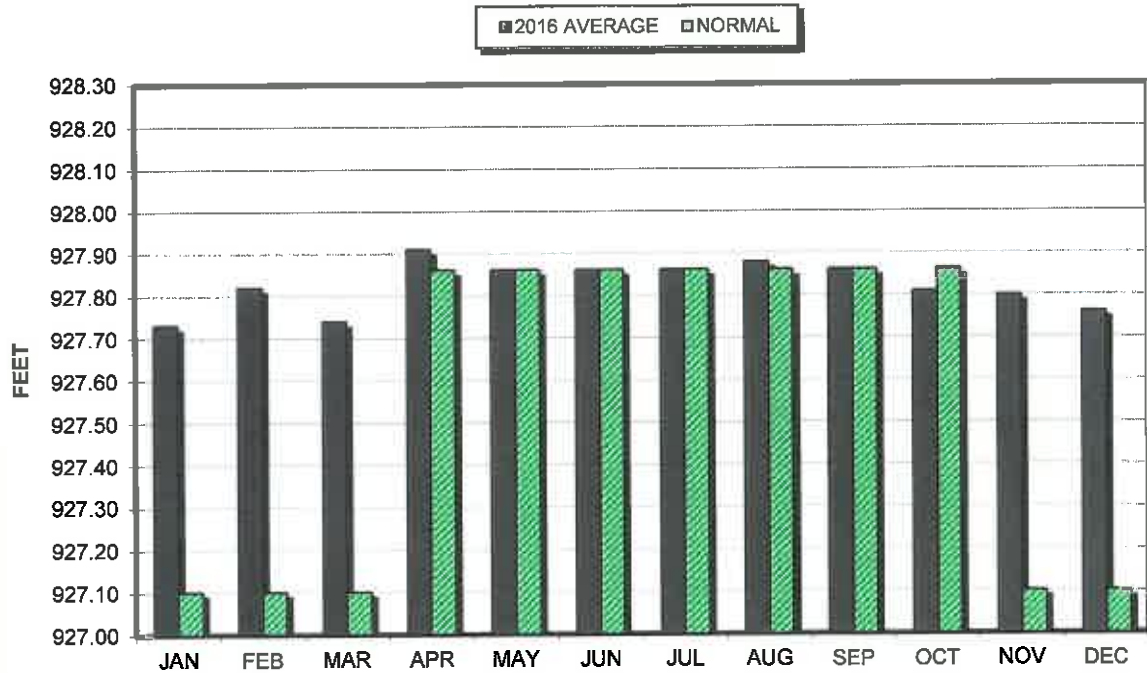
PRECIPITATION - DELAVAN LAKE, WI



LAKE ELEVATION - DELAVAN LAKE, WI



AVERAGE LAKE ELEVATION - DELAVAN LAKE, WI



**DATA SUMMARY
DELAVAN LAKE, WISCONSIN**

Month	Ice On Date	Ice Off Date	Air Temperature		Precipitation		Lake Water Temp.	Average Lake Elevation	Secchi Disc	
			Maximum	Minimum	Month (In Inches)	Yr to Date (In Inches)			Average (In Feet)	Maximum (In Feet)
2014										
JAN			41	-19	0.87	0.87	-	927.65	-	-
FEB			43	-16	0.76	1.63	-	927.45	-	-
MAR			64	-7	0.73	2.36	-	927.72	-	-
APR			79	24	3.22	5.58	-	927.84	-	-
MAY		4/11/14	87	37	2.85	8.43	59	927.88	23.0	26.0
JUN			90	49	5.93	14.36	72	927.87	9.7	14.0
JUL			88	49	1.51	15.87	72	927.87	6.8	7.5
AUG			88	48	4.61	20.48	75	927.81	8.6	11.0
SEP			82	36	1.97	22.45	69	927.86	7.9	9.0
OCT			76	30	1.95	24.40	61	927.80	7.8	9.0
NOV			60	2	1.45	25.85	-	927.78	-	-
DEC			49	1	0.85	26.70	-	927.77	-	-
2015										
JAN	1/2/15		40	-10	0.26	0.26	-	927.71	-	-
FEB			39	-13	0.71	0.97	-	927.73	-	-
MAR			71	-14	0.90	1.87	-	927.76	-	-
APR		4/2/15	78	26	2.61	4.48	41	927.85	4.2	4.0
MAY			82	32	4.96	9.44	55	927.87	18.0	35.0
JUN			88	40	6.26	15.70	66	927.89	16.5	35.0
JUL			88	47	3.06	18.76	74	927.86	9.9	15.0
AUG			90	48	4.43	23.19	74	927.75	8.3	9.0
SEP			89	42	6.18	29.37	-	927.93	-	-
OCT			79	28	1.62	30.99	57	927.74	9.7	13.0
NOV			73	4	5.17	36.16	-	927.84	-	-
DEC			60	13	5.21	41.37	-	927.81	-	-
2016										
JAN	1/11/16		42	-6	0.99	0.99	-	927.73	-	-
FEB			59	0	0.63	1.62	-	927.82	-	-
MAR		3/9/16	68	1	4.10	5.72	42	927.74	18.7	23.0
APR			82	21	1.61	7.33	44	927.91	16.3	23.0
MAY			87	32	3.33	10.66	56	927.85	17.7	24.0
JUN			91	48	3.42	14.08	72	927.86	13.4	24.0
JUL			92	50	3.03	17.11	77	927.86	8.0	12.0
AUG			90	51	3.93	21.04	79	927.88	8.7	11.0
SEP			91	48	2.78	23.82	74	927.86	12.0	13.0
OCT			81	32	3.07	26.89	64	927.81	6.8	7.5
NOV			75	18	3.26	30.15	57	927.80	13.7	14.0
DEC	12/18/16		47	-14	1.16	31.31	-	927.80	-	-