

## MEMO

TO: Town of Delavan Lake Committee  
FROM: Delavan Lake Sanitary District  
RE: DLSD Lake Management Activities for December  
DATE: January 2, 2025

### LAKE MONITORING RECORDS

December Precipitation – .75 inches  
Number of Run-off events – 0  
Precipitation Year-to-date – 38.59 inches  
Ice On Date – January 15, 2024  
Ice Off Date – February 27, 2024

November Secchi Disc Readings: Maximum – 12.0 feet  
Average – 12.0 feet

### LAKE LEVEL

DNR Summer Lake Elevation Expectations – 927.86 feet  
Average Lake Elevation – 927.85 feet

### LAKE MANAGEMENT PROGRAM

Weed Harvesting equipment is getting repaired and ready for spring.

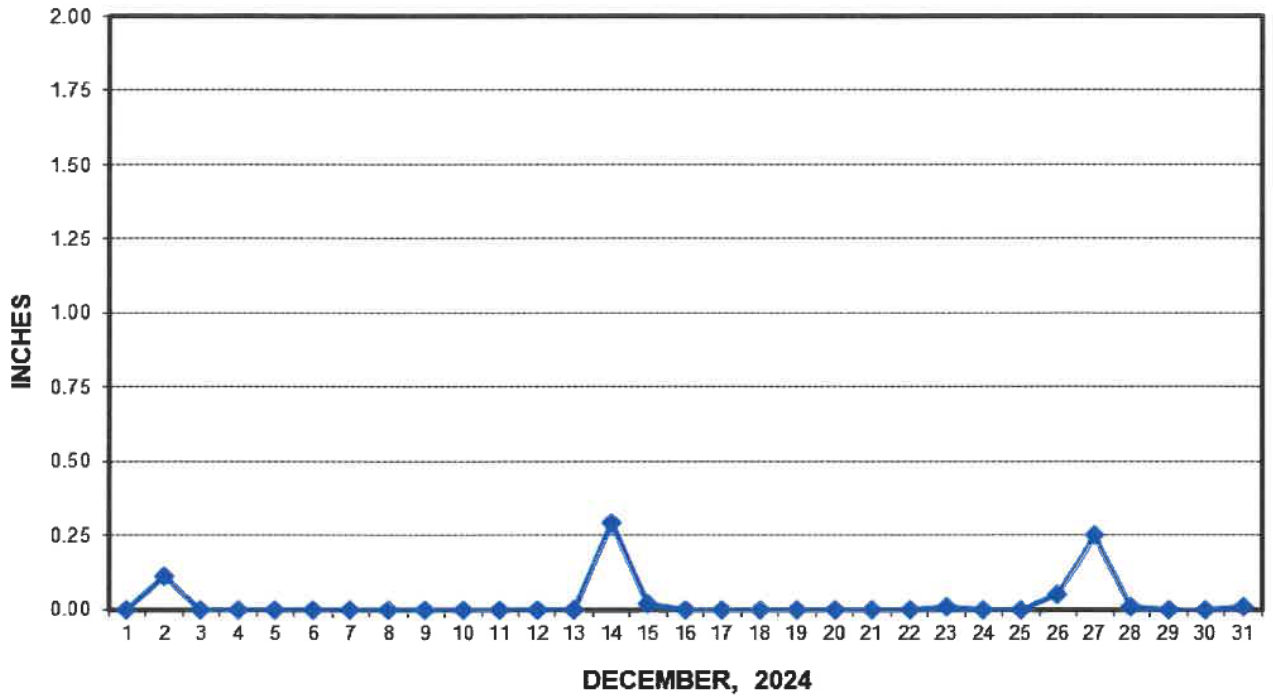
We finished the year with a record harvest of 8,028 cubic yards removed from the lake, which equates to 1,204 LBS of phosphorous removed.

Lift Station #2A project is completed to the point of just punch list items.

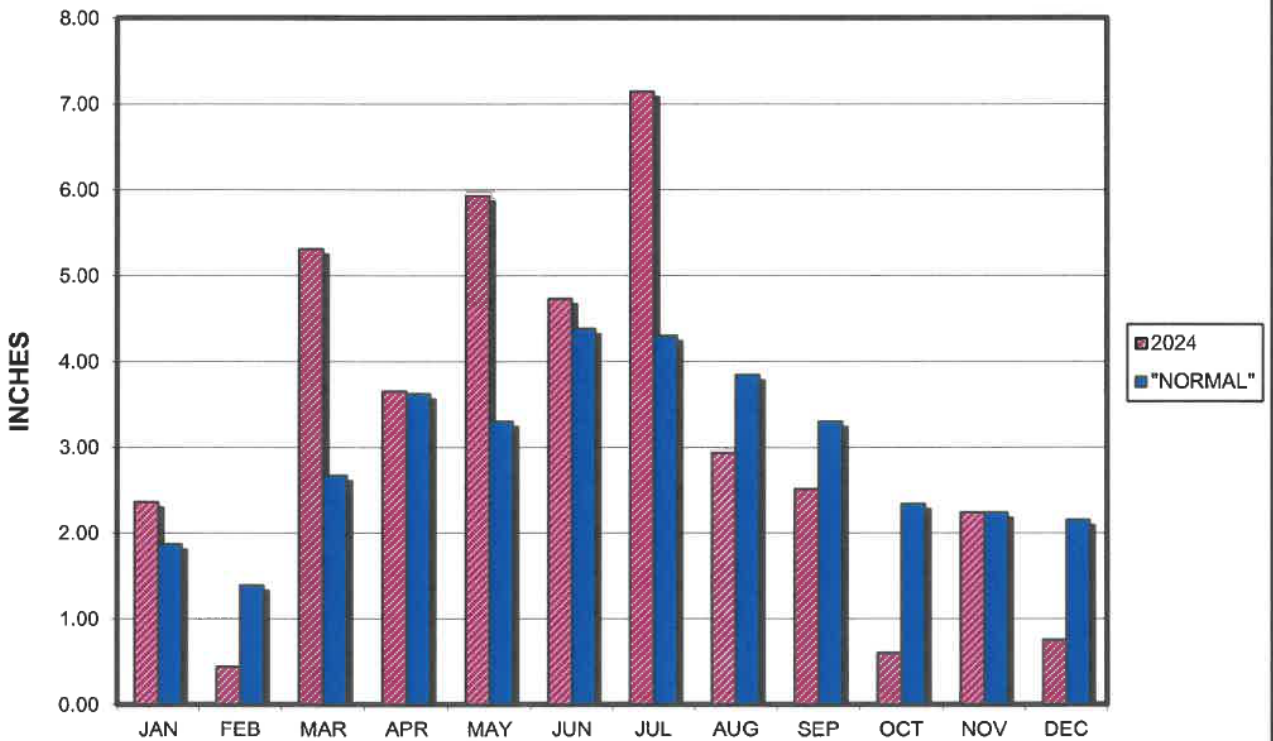
December warm temperatures have prevented the lake from freezing over and areas with ice are a concern for thin ice conditions.

Encl.: (3)

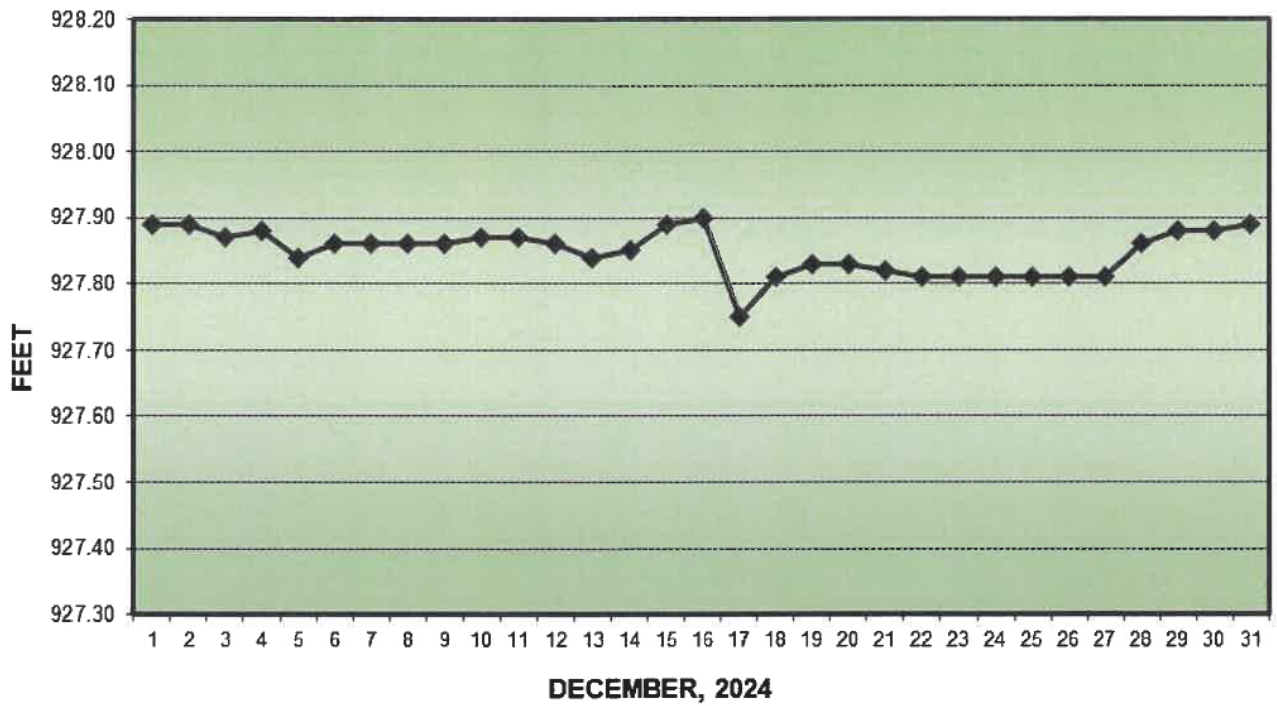
### PRECIPITATION - DELAVAN LAKE, WI



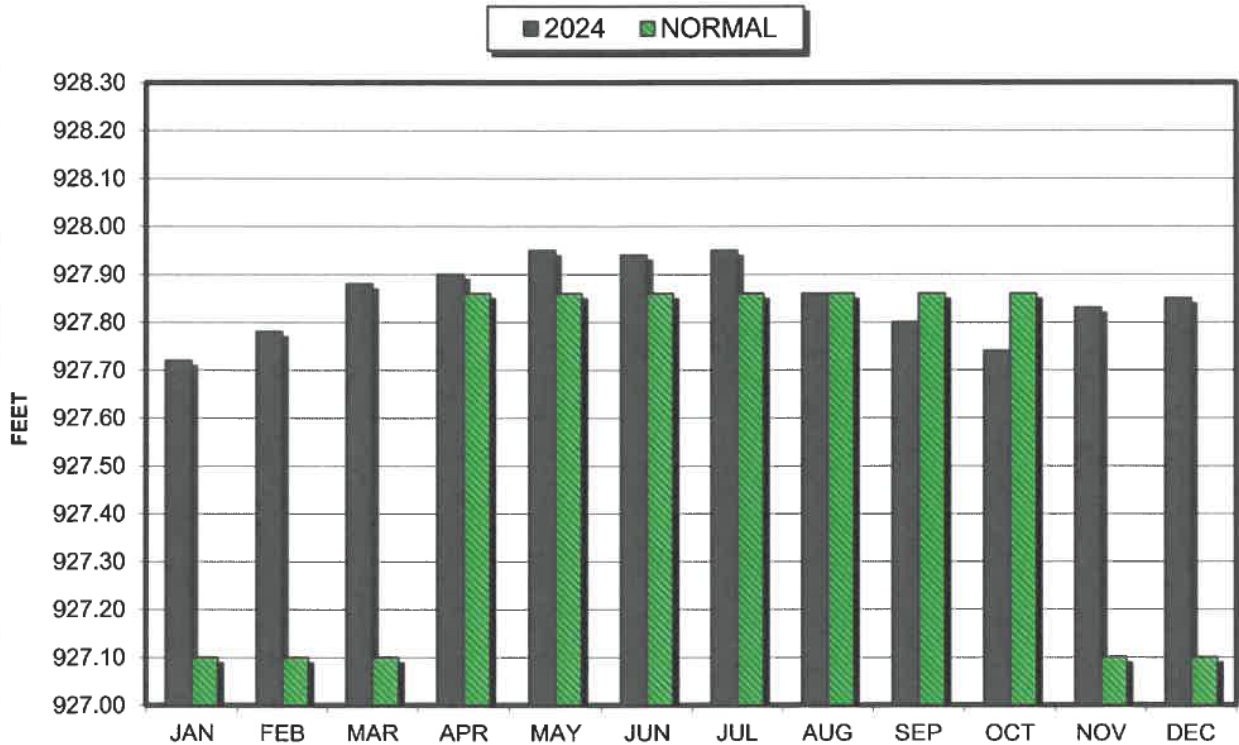
### PRECIPITATION - DELAVAN LAKE, WI



### LAKE ELEVATION - DELAVAN LAKE, WI



### AVERAGE LAKE ELEVATION - DELAVAN LAKE, WI



**DATA SUMMARY  
DELAVAN LAKE, WISCONSIN**

Month	Ice On Date	Ice Off Date	Air Temperature		Precipitation		Lake Water Temp.	Average Lake Elevation	Secchi Disc		Cubic Yards Harvested	
			Max.	Min.	Month (In Inches)	Yr to Date (In Inches)			Average (In Feet)	Maximum (In Feet)	Month	YTD
<b>2022</b>												
JAN	1/10/22		40	-18	0.63	0.63	-	927.72	-	-	-	-
FEB			49	-3	0.77	1.40	-	927.70	-	-	-	-
MAR		3/23/22	73	6	2.91	4.31	-	927.80	-	-	-	-
APR			81	24	5.05	9.36	42	927.88	20.0	20.0	-	-
MAY			91	33	2.42	11.78	62	927.90	12.7	20.0	387	387
JUN			98	47	2.21	13.99	74	927.87	9.7	13.0	2184	2571
JUL			90	52	2.98	16.97	79	927.68	8.7	10.0	1431	4002
AUG			92	52	4.28	21.25	79	927.60	6.6	9.0	1585	5587
SEP			85	35	7.51	28.76	59	927.85	6.7	7.0	305	5892
OCT			78	29	1.67	30.43	-	927.79	-	-	39	5931
NOV			75	9	1.23	31.66	51	927.77	12.3	15.0	-	-
DEC	12/19/22		56	-13	1.67	33.33	-	927.72	-	-	-	-
<b>2023</b>												
JAN			49	-14	1.67	1.67	-	927.71	-	-	-	-
FEB			51	-7	4.14	5.81	-	927.78	-	-	-	-
MAR		3/10/23	69	9	2.89	8.70	-	927.81	-	-	-	-
APR			82	26	3.87	12.57	49	927.83	8.0	9.0	-	-
MAY			91	35	1.45	14.02	62	927.85	21.8	38.0	855	855
JUN			92	43	1.22	15.24	70	927.73	9.6	17.0	1553	2408
JUL			92	53	3.67	18.91	75	927.68	6.0	8.0	1558	3966
AUG			97	44	1.88	20.79	76	927.83	7.3	10.0	1620	5586
SEP			93	42	3.78	24.57	68	927.75	8.7	12.0	854	6440
OCT			86	24	3.01	27.58	-	927.89	-	-	146	6586
NOV			68	10	1.01	28.59	-	927.84	-	-	-	-
DEC			56	13	2.13	30.72	-	927.75	-	30.0	-	-
<b>2024</b>												
JAN	1/15/24		38	-16	2.36	2.36	-	927.72	-	-	-	-
FEB		2/27/24	74	10	0.44	2.80	-	927.78	-	-	-	-
MAR			72	22	5.31	8.11	-	927.88	-	-	-	-
APR			82	28	3.65	11.76	-	927.90	-	-	-	-
MAY			87	44	5.93	17.69	67	927.95	18.2	28.0	466	466
JUN			94	47	4.73	22.42	71	927.94	7.6	15.0	1476	1942
JUL			91	50	7.14	29.56	84	927.95	6.0	6.0	2035	3977
AUG			95	48	2.93	32.49	75	927.86	7.0	7.0	1692	5669
SEP			91	42	2.51	35.00	77	927.80	8.8	10.0	1769	7438
OCT			84	32	0.60	35.60	66	927.74	7.3	12.0	590	8028
NOV			65	12	2.24	37.84	-	927.83	12	12	-	-
DEC			54	-1	0.75	38.59	-	927.85	-	-	-	-