

MEMO

TO: Town of Delavan Lake Committee
FROM: Delavan Lake Sanitary District
RE: DLSD Lake Management Activities for September
DATE: September 29, 2017

LAKE MONITORING RECORDS

September Precipitation - .25 inches
Number of Run-off events - 0
Precipitation Year-to-date - 33.23 inches
Ice Off Date - February 24, 2017
September Secchi Disc Readings: Maximum - 9.0 ft.
Average - 6.1 ft.

LAKE LEVEL

DNR Summer Lake Elevation Expectations - 927.86 feet
Average Lake Elevation - 927.78 feet

LAKE MANAGEMENT PROGRAM

Harvester operations coming to close as we get ready to do our winter tear down and maintenance on the units.

Lift Station #9 and Administrative building projects are coming to a close.

Pellets and Floc Logs are still in the process of study. Dave and Charlie are heading up the program and reviewing results.

Waterways technically approved the Harvester Purchase and DLSD is waiting for a final confirmation that funds have been put in there for our next purchase of a harvester.

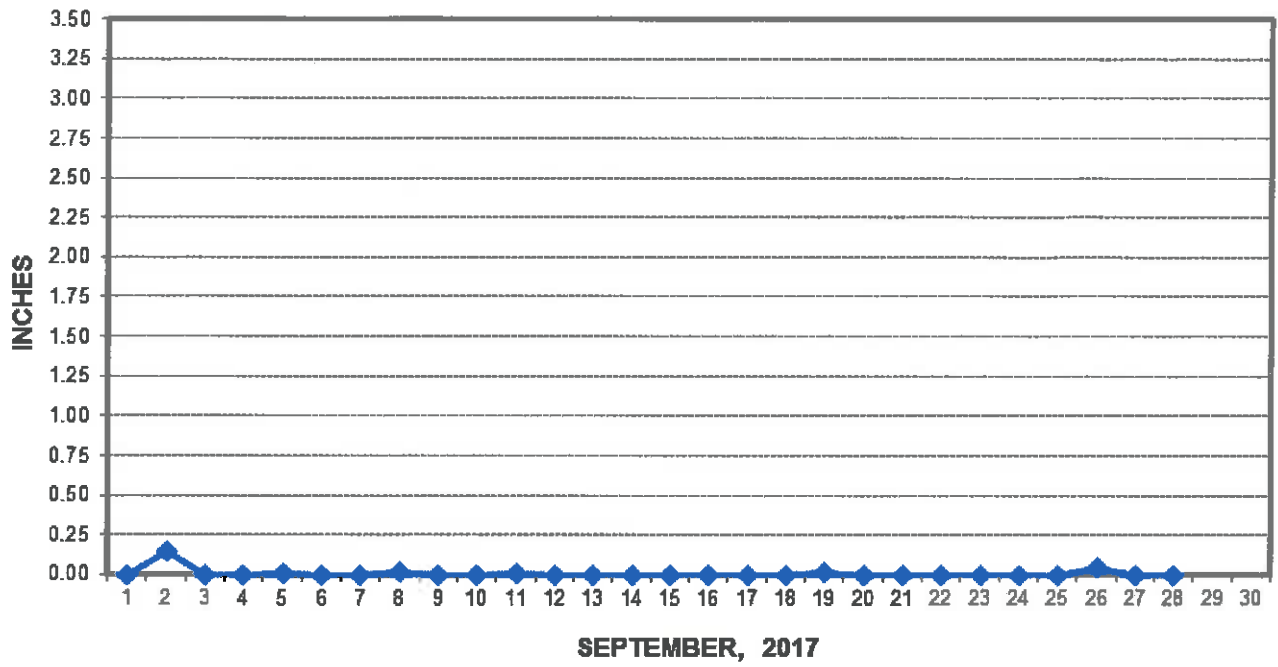
Charlie will be attending Advance Lake Leaders this month.

Treatment for pennywort was done on September 28, 2017. This invasive species has been found in several locations around the lake.

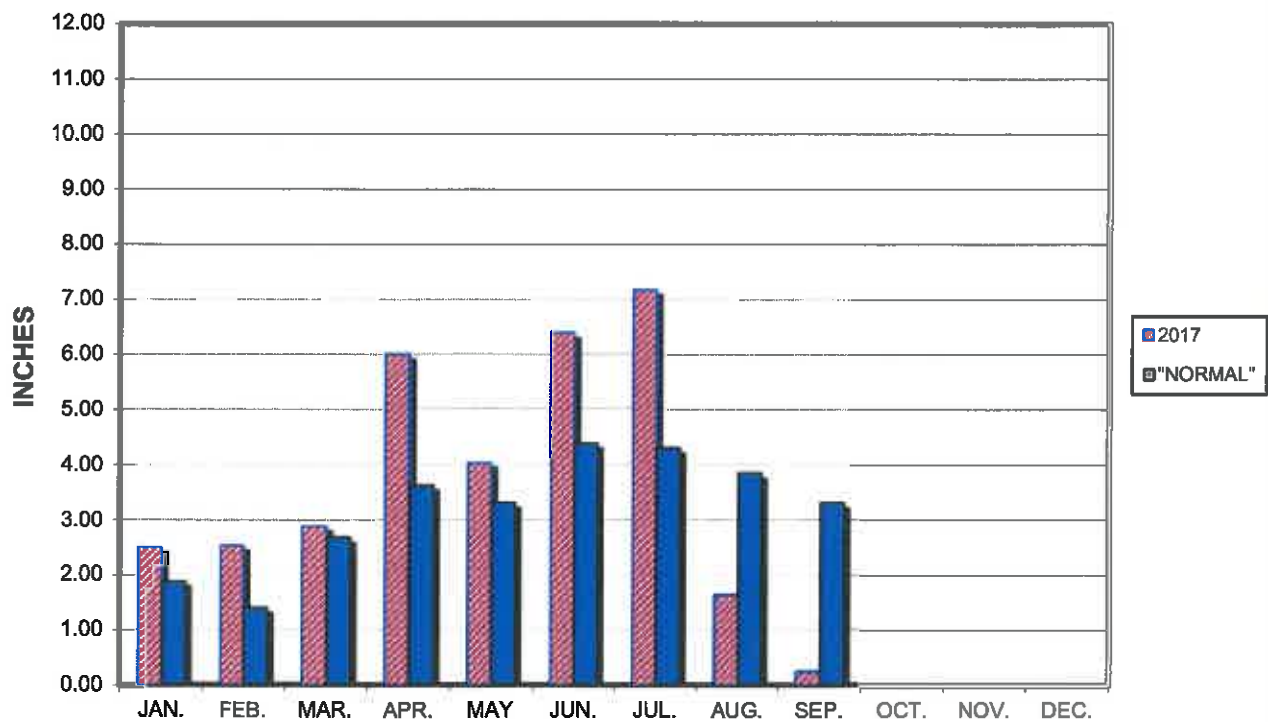
Through September 27th the harvesters have removed approximately 3,446 cubic yards of plant material in 2017.

Encl.: (3)

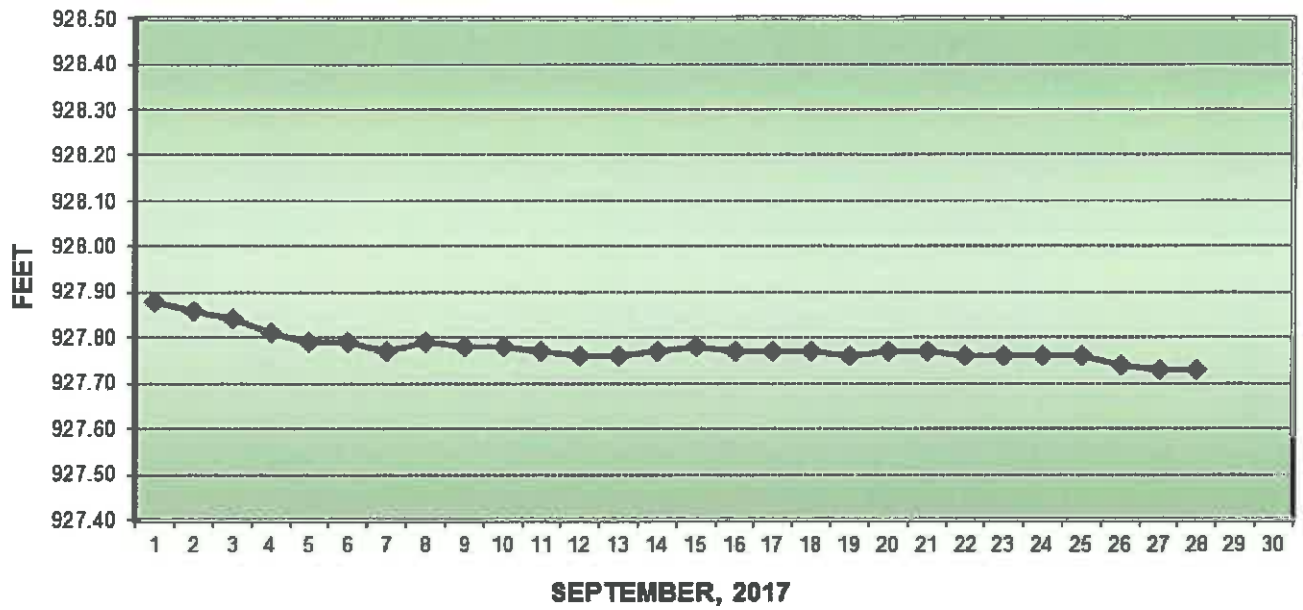
PRECIPITATION - DELAVAN LAKE, WI



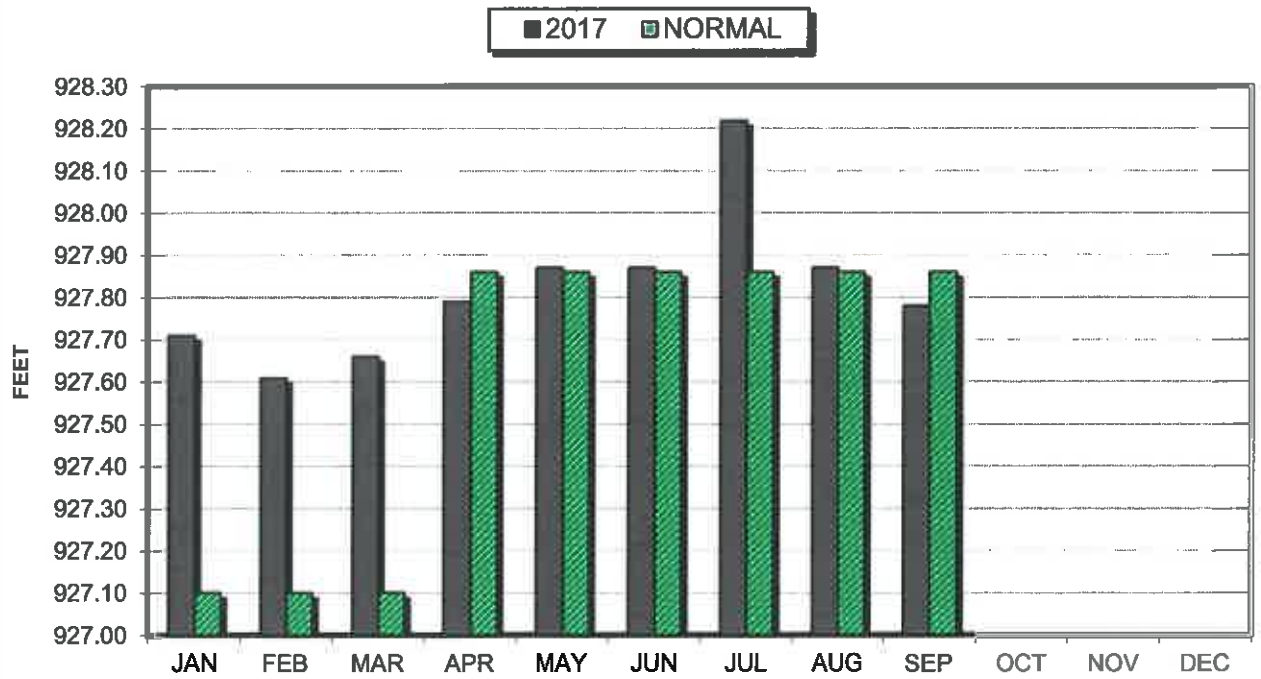
PRECIPITATION - DELAVAN LAKE, WI



LAKE ELEVATION - DELAVAN LAKE, WI



AVERAGE LAKE ELEVATION - DELAVAN LAKE, WI



**DATA SUMMARY
DELAVAN LAKE, WISCONSIN**

Month	Ice On Date	Ice Off Date	Air Temperature			Precipitation		Lake Water Temp.	Average Lake Elevation	Secchi Disc		Cubic Yards Harvested	
			Max.	Min.	Mean	Month (In Inches)	Yr to Date (In Inches)			Average (In Feet)	Maximum (In Feet)	Month	YTD
2015													
JAN	1/2/15		40	-10	15	0.26	0.26	-	927.71	-	-	-	-
FEB			39	-13	13	0.71	0.97	-	927.73	-	-	-	-
MAR			71	-14	28	0.90	1.87	-	927.76	-	-	-	-
APR		4/2/15	78	26	52	2.61	4.48	41	927.85	4.2	4.0	-	-
MAY			82	32	57	4.96	9.44	55	927.87	18.0	35.0	367	367
JUN			88	40	64	6.26	15.70	66	927.89	16.5	35.0	1417	1784
JUL			88	47	68	3.06	18.76	74	927.86	9.9	15.0	1493	3277
AUG			90	48	69	4.43	23.19	74	927.75	8.3	9.0	1058	4335
SEP			89	42	66	6.18	29.37	-	927.93	-	-	328	4663
OCT			79	28	54	1.62	30.99	57	927.74	9.7	13.0	228	4891
NOV			73	4	39	5.17	36.16	-	927.84	-	-	-	-
DEC			60	13	37	5.21	41.37	-	927.81	-	-	-	-
2016													
JAN	1/11/16		42	-6	18	0.99	0.99	-	927.73	-	-	-	-
FEB			59	0	29	0.63	1.62	-	927.82	-	-	-	-
MAR			68	1	34	4.10	5.72	42	927.74	18.7	23.0	-	-
APR		3/9/16	82	21	52	1.61	7.33	44	927.91	16.3	23.0	-	-
MAY			87	32	60	3.33	10.66	56	927.85	17.7	24.0	-	-
JUN			91	48	70	3.42	14.08	72	927.86	13.4	24.0	212	212
JUL			92	50	71	3.03	17.11	77	927.86	8.0	12.0	861	1073
AUG			90	51	71	3.93	21.04	79	927.88	8.7	11.0	608	1681
SEP			91	48	70	2.78	23.82	74	927.86	12.0	13.0	925	2606
OCT			81	32	57	3.07	26.89	64	927.81	6.8	7.5	395	3001
NOV			75	18	47	3.26	30.15	57	927.80	13.7	14.0	277	3278
DEC	12/18/16		47	-14	17	1.90	32.05	-	927.76	-	-	-	-
2017													
JAN			54	-2	26	2.49	2.49	-	927.71	-	-	-	-
FEB			68	10	39	2.53	5.02	-	927.61	-	-	-	-
MAR			75	11	32	2.88	7.90	-	927.66	-	-	-	-
APR			81	30	56	6.01	13.91	49	927.79	30.0	30.0	-	-
MAY			86	32	59	4.03	17.94	54	927.87	19.7	26.0	296	296
JUN			93	47	70	6.39	24.33	68	927.87	12.6	19.0	1047	1343
JUL			89	54	72	7.18	31.51	76	928.22	5.9	10.0	840	2183
AUG			84	44	64	1.64	32.98	73	927.87	6.2	7.0	1157	3340
SEP			94	42	68	0.25	33.23	72	927.78	6.1	9.0	106	3446