

## MEMO

TO: Town of Delavan Lake Committee  
FROM: Delavan Lake Sanitary District  
RE: DLSD Lake Management Activities for July  
DATE: July 26, 2023

### LAKE MONITORING RECORDS

July Precipitation – 1.97 inches  
Number of Run-off events – 0  
Precipitation Year-to-date – 17.21 inches  
Ice On Date – December 19, 2022  
Ice Off Date – March 10, 2023

July Secchi Disc Readings: Maximum – 8.0 feet  
Average – 6.0 feet

### LAKE LEVEL

DNR Summer Lake Elevation Expectations – 927.86 feet  
Average Lake Elevation – 927.66 feet

Due to the low lake level, we are unable to use Blue Gill Road as an offload site on the west end of the lake. As a result, all weeds on the main lake are being transported to the Town Park for offloading which has decreased harvester production due to the increased travel time.

### LAKE MANAGEMENT PROGRAM

The Duckweed Harvesting Pilot Program on the Inlet has ended for the 2023 season. We are working with Aquarius Systems to put a new Duckweed program in place for 2024. Ongoing regular harvesting on the Inlet will continue through the end of the season.

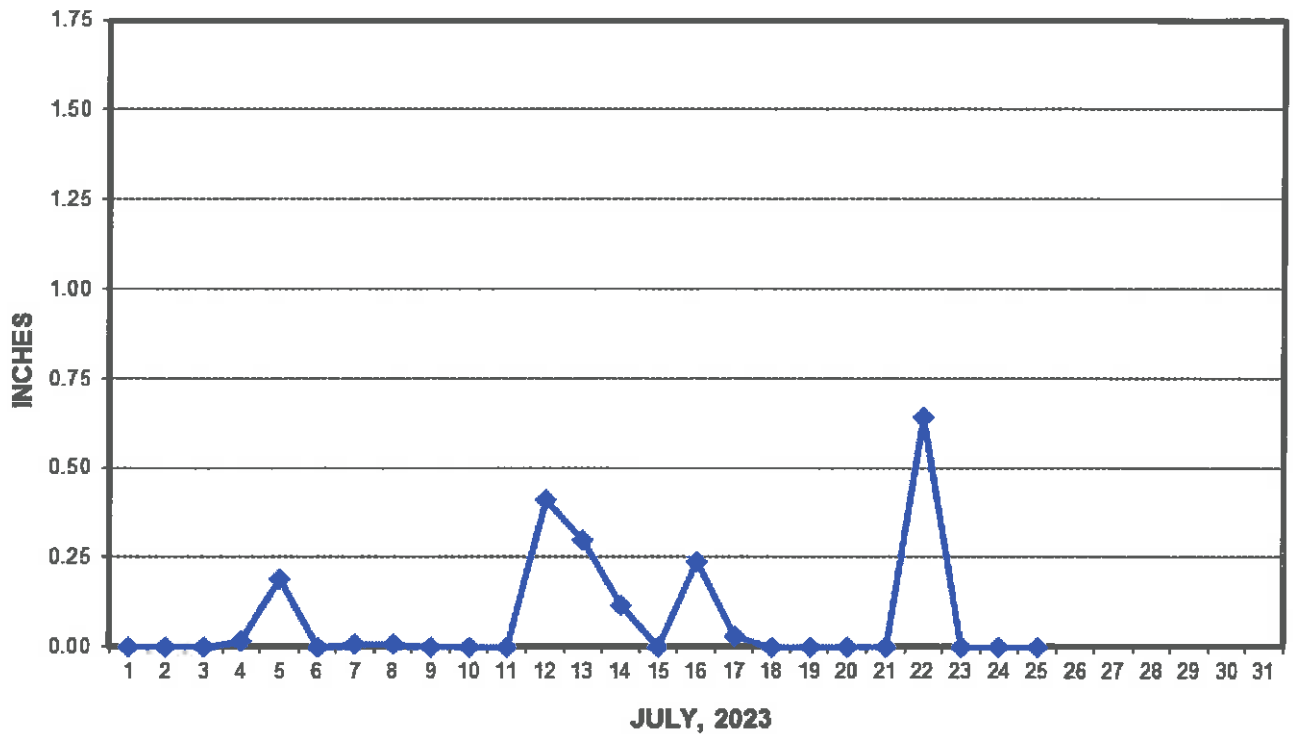
Wild Celery is releasing early this year from the bottom of the lake for repopulation to different areas of the lake. If you look, some of the plants still have their roots attached. The released plants always end up on the wind driven side of the lake. The early release is due to the low lake level and above average water temperatures which is caused by the lower water level. Typically, Wild Celery will release from the bottom each year toward the end of August.

The sewer utility is busy working with projects on HWY O, LS #4 and Borg Road easements.

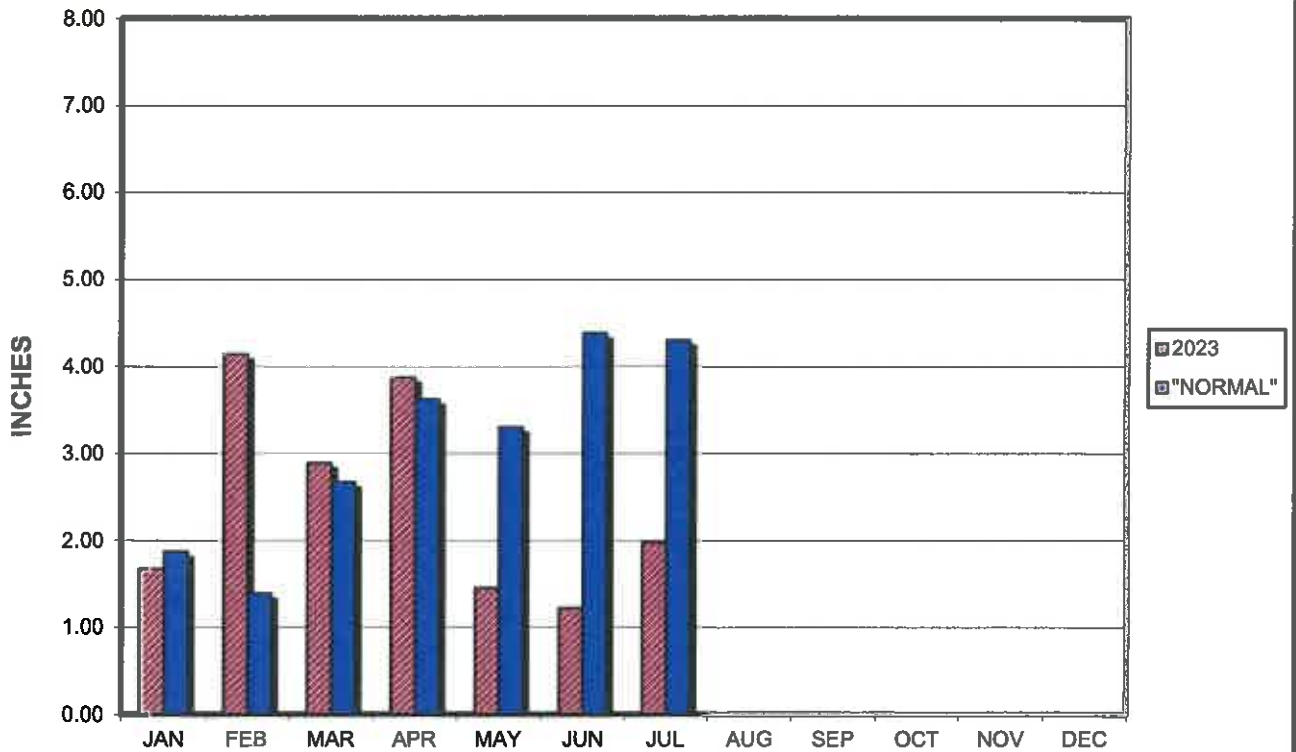
Dry hot weather continues through July.

Encl.: (3)

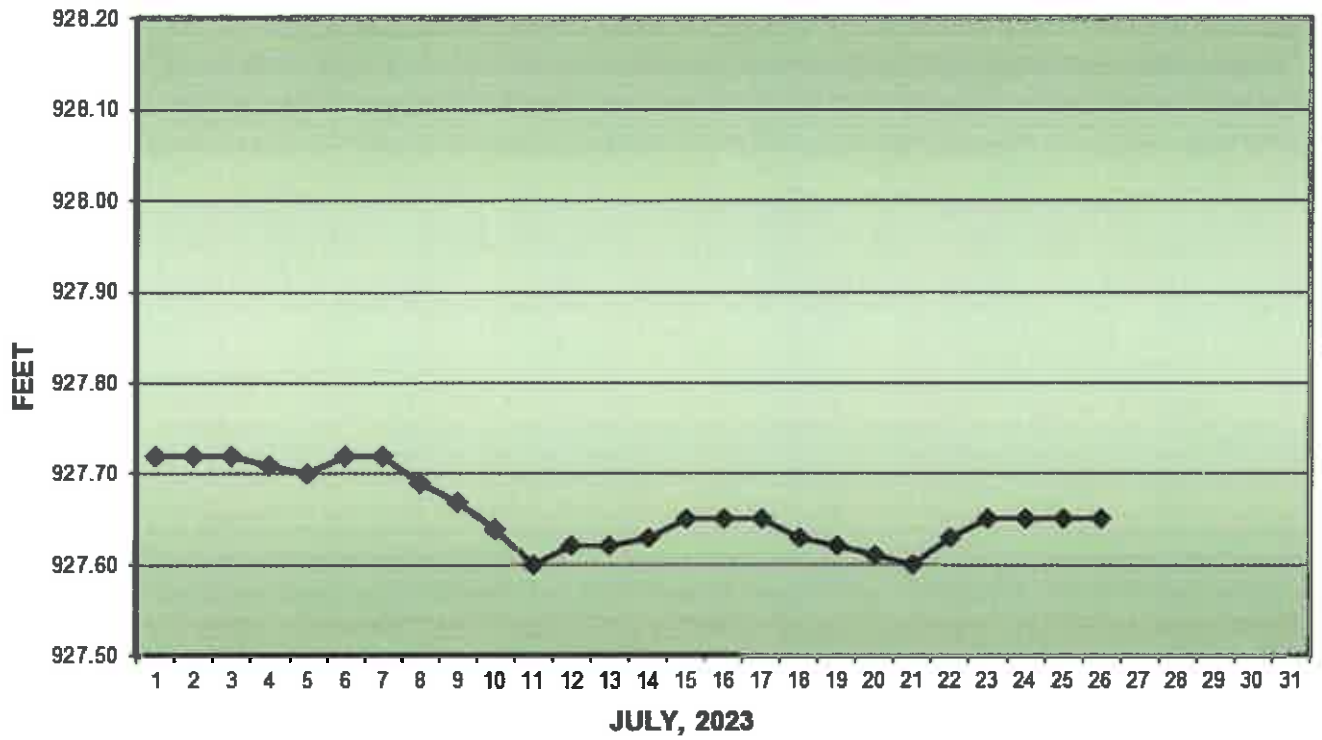
### PRECIPITATION - DELAVAN LAKE, WI



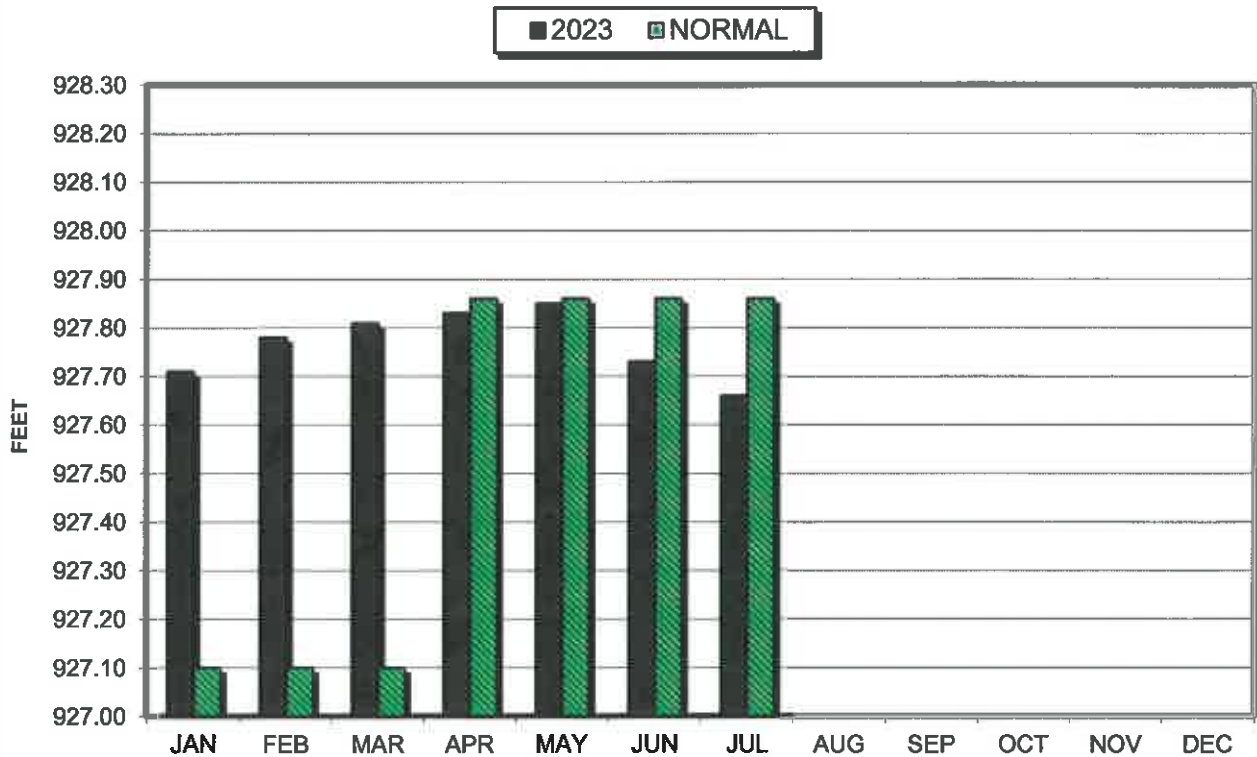
### PRECIPITATION - DELAVAN LAKE, WI



### LAKE ELEVATION - DELAVAN LAKE, WI



### AVERAGE LAKE ELEVATION - DELAVAN LAKE, WI



**DATA SUMMARY  
DELAVAN LAKE, WISCONSIN**

Month	Ice On Date	Ice Off Date	Air Temperature			Precipitation		Lake Water Temp.	Average Lake Elevation	Secchi Disc		Cubic Yards Harvested	
			Max.	Min.	Mean	Month (In Inches)	Yr to Date (In Inches)			Average (In Feet)	Maximum (In Feet)	Month	YTD
<b>2021</b>													
JAN	1/21/21		38	-6	22	1.39	1.39	-	927.58	-	-	-	-
FEB			47	-15	16	1.45	2.84	-	927.50	-	-	-	-
MAR		3/18/21	65	9	37	1.54	4.38	-	927.67	-	-	-	-
APR			84	21	53	0.76	5.14	46	927.75	8.7	9	-	-
MAY			88	30	59	1.52	6.66	67	927.87	18.3	32.0	547	547
JUN			95	46	71	2.58	9.24	76	927.84	10.1	19.5	2495	3042
JUL			92	52	72	2.87	12.11	78	927.89	10.2	14.0	1800	4842
AUG			93	51	72	3.96	16.07	77	927.78	9.0	12.0	1910	6752
SEP			89	45	67	1.33	17.40	66	927.53	7.8	11.0	595	7347
OCT			87	29	58	4.78	22.18	67	927.55	9.3	11.0	59	7406
NOV			66	15	41	0.46	22.64	51	927.57	9.7	13	-	-
DEC			64	7	35	1.81	24.45	-	927.61	-	-	-	-
<b>2022</b>													
JAN	1/10/22		40	-18	11	0.63	0.63	-	927.72	-	-	-	-
FEB			49	-3	23	0.77	1.40	-	927.70	-	-	-	-
MAR		3/23/22	73	6	34	2.91	4.31	-	927.80	-	-	-	-
APR			81	24	52	5.05	9.36	42	927.88	20.0	20.0	387	387
MAY			91	33	62	2.42	11.78	62	927.90	12.7	20.0	2184	2571
JUN			98	47	72	2.21	13.99	74	927.87	9.7	13.0	1431	4002
JUL			90	52	71	2.98	16.97	79	927.68	8.7	10.0	1585	5587
AUG			92	52	72	4.28	21.25	79	927.60	6.6	9.0	305	5892
SEP			85	35	60	7.51	28.76	59	927.85	6.7	7.0	39	5931
OCT			78	29	54	1.67	30.43	-	927.79	-	-	-	-
NOV			75	9	42	1.23	31.66	51	927.77	12.3	15.0	-	-
DEC	12/19/22		56	-13	22	1.67	33.33	-	927.72	-	-	-	-
<b>2023</b>													
JAN			49	-14	18	1.67	1.67	-	927.71	-	-	-	-
FEB			51	-7	22	4.14	5.81	-	927.78	-	-	-	-
MAR		3/10/23	69	9	39	2.89	8.70	-	927.81	-	-	-	-
APR			82	26	54	3.87	12.57	49	927.83	8.0	9.0	855	855
MAY			91	35	63	1.45	14.02	62	927.85	21.8	38.0	1553	2408
JUN			92	43	67	1.22	15.24	70	927.73	9.6	17.0	1224	3632
JUL			91	53	72	1.97	17.21	75	927.66	6.0	8.0	-	-