

**DELAVAN LAKE SANITARY DISTRICT  
ADMINISTRATOR'S REPORT  
MAY ACTIVITY 2024**

**ADMINISTRATION**

Lift Station #3 and #10 generators are installed. Final wiring methods are also being completed to tie in control panel.

New experimental mesh put on harvester again to experiment with better ways to pick up algae and duck weed.

Villa Clare Development Sanitary Sewer review is in progress.

Lift Station #2A contractor getting things ready to start project.

Modifications to the barge are complete and it is a float and ready for use.

Shores of Delavan held preconstruction for site grading. Utility meetings are soon.

Audit has been completed.

**SEWER SYSTEM OPERATIONS**

**Building Sewer Connections**

**New Connections for the Month - 0**

**Reconnections for the Month - 1**

**Disconnections for the Month - 1**

**Total Number of Structures Connected to Date - 3,131**

**Total ERU Count for the Month - 4,055**

**Operation and Maintenance**

**Average May Daily Wastewater Flow to WalCoMet - 585,311 gallons**

**Peak May Flow - 887,364 gallons**

**Diggers Requests Marked for the Month - 114**

**Emergency Call Outs - 15**

**Lateral Leaks**

**Sump Pump Discharges - 4**

**Current Lateral Leaks - 51**

**Completed Lateral Leak Orders - 5**

The following charts are attached: *Wastewater Flow comparison with Precipitation May, 2024*  
*Average Daily Wastewater Flow comparison with Peak Flow*  
*Precipitation comparison with "normal"*  
*Wastewater Flow comparison with "normal"*  
*Environmental Data Summary*  
*Daily Lake Elevation for May, 2024*  
*Lake Elevation comparison with "normal"*

#### **Lake Monitoring/Lake Level**

**Precipitation Total for the Month – 5.93 inches**  
**Above Normal – 2.63 inches**  
**Ice On Date – January 15, 2024**  
**Ice Off Date – February 27, 2024**

**Secchi Disc Reading Main Lake – 28.0 feet 5/6/2024**

*See attached Lake Elevation Graph and Chart.*

#### **Lake Information**

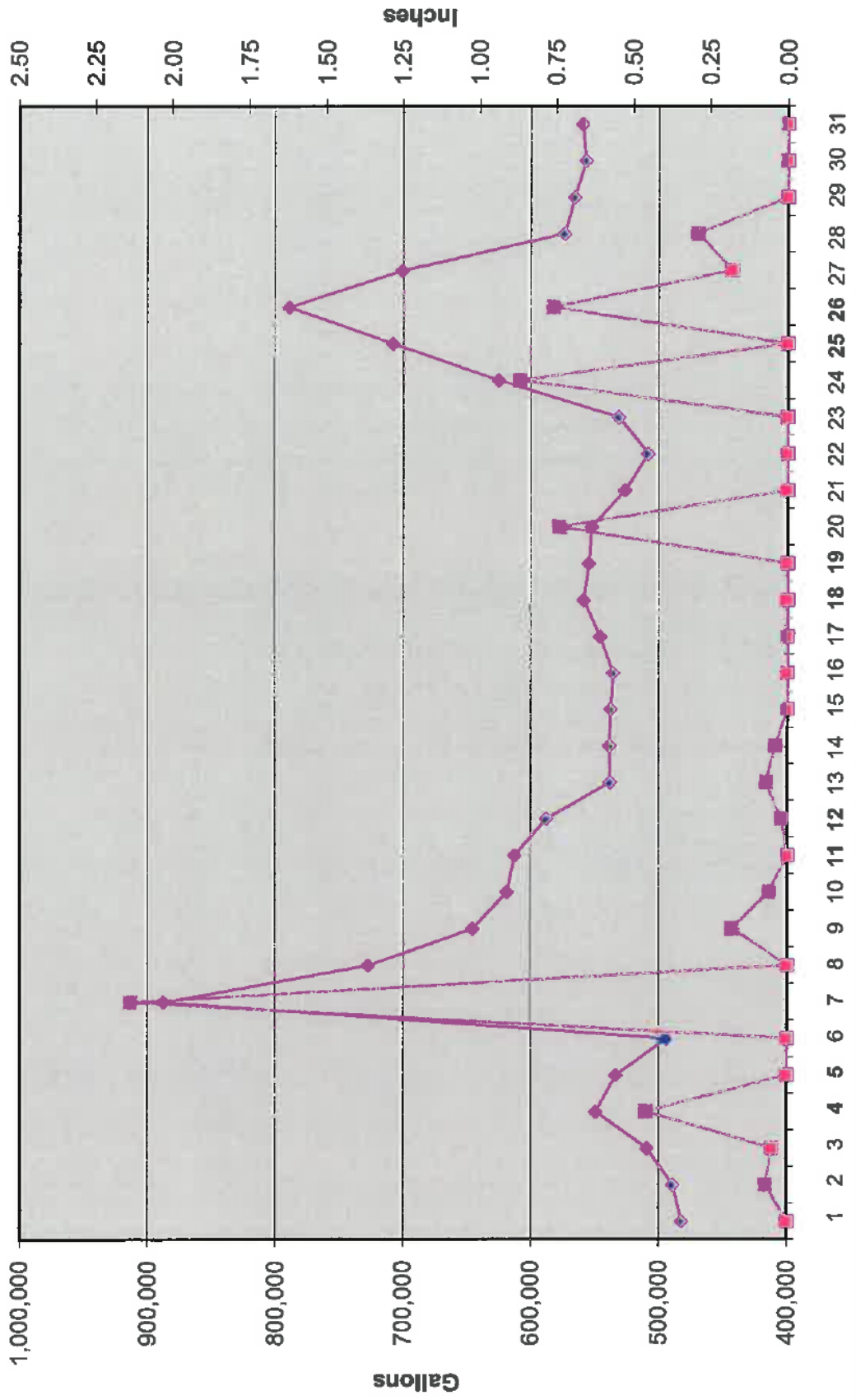
**DNR Lake Level Goal – 927.86 feet**  
**Average Lake Elevation – 927.95 feet**

#### **Lake Committee**

The next meeting of the Lake Committee is scheduled for 7:00 P.M. on Wednesday, July 3, 2024 at the Town Hall.

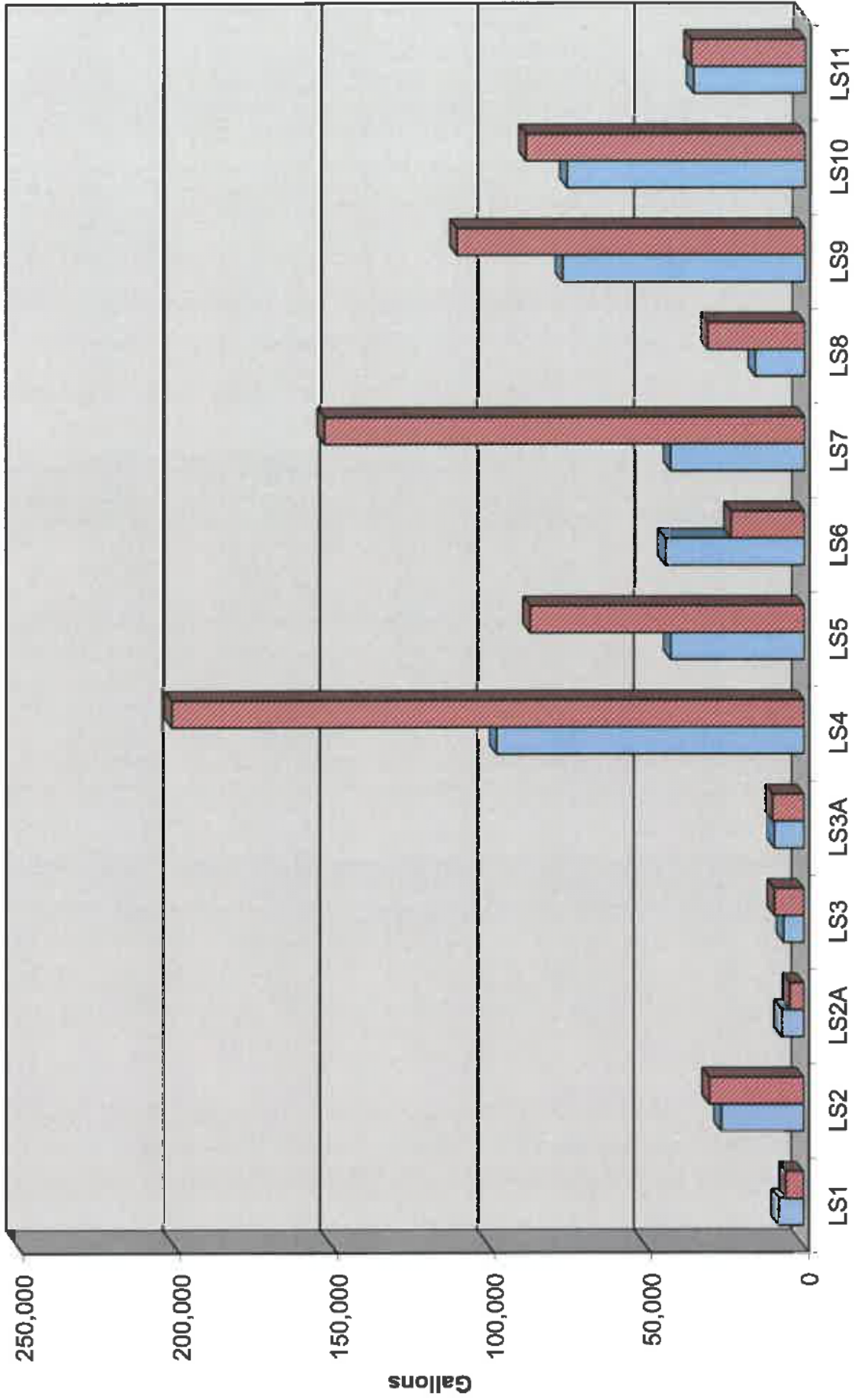
#### **Attachments**

### Wastewater Flow/Precipitation - May, 2024

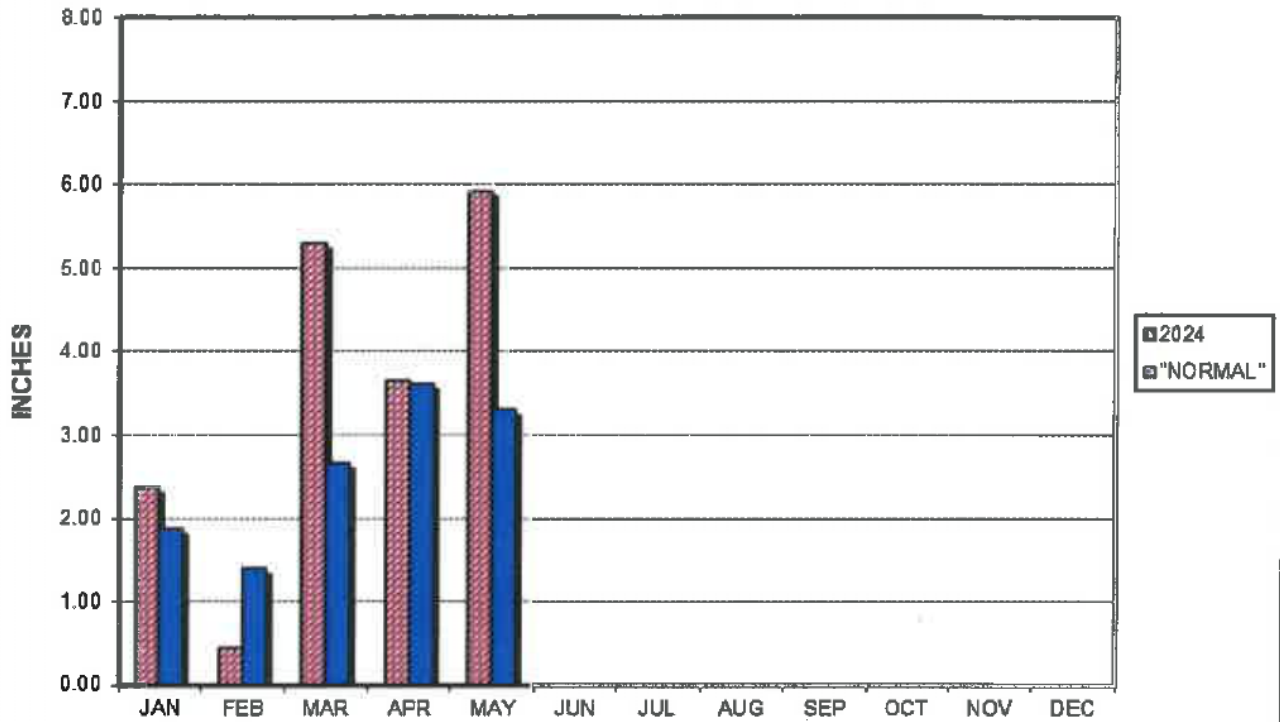


Average Daily Flow/Peak Flow by Area - May, 2024

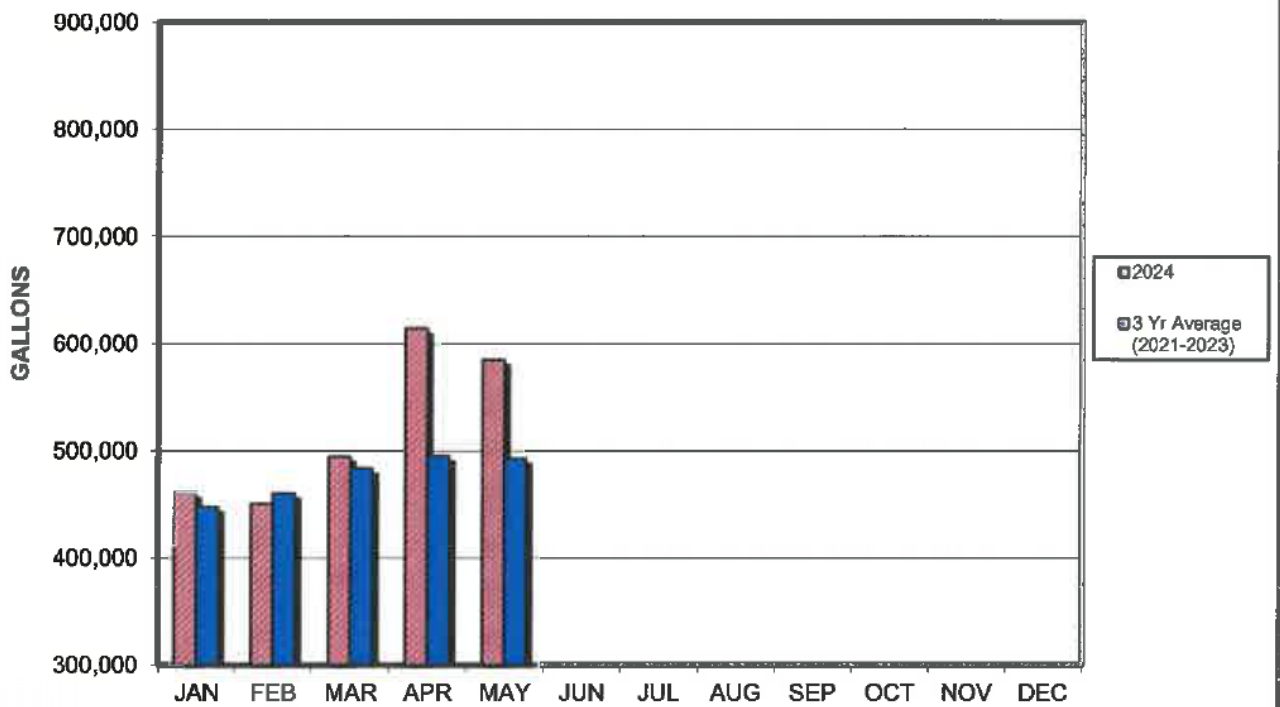
□ Average    ■ Peak



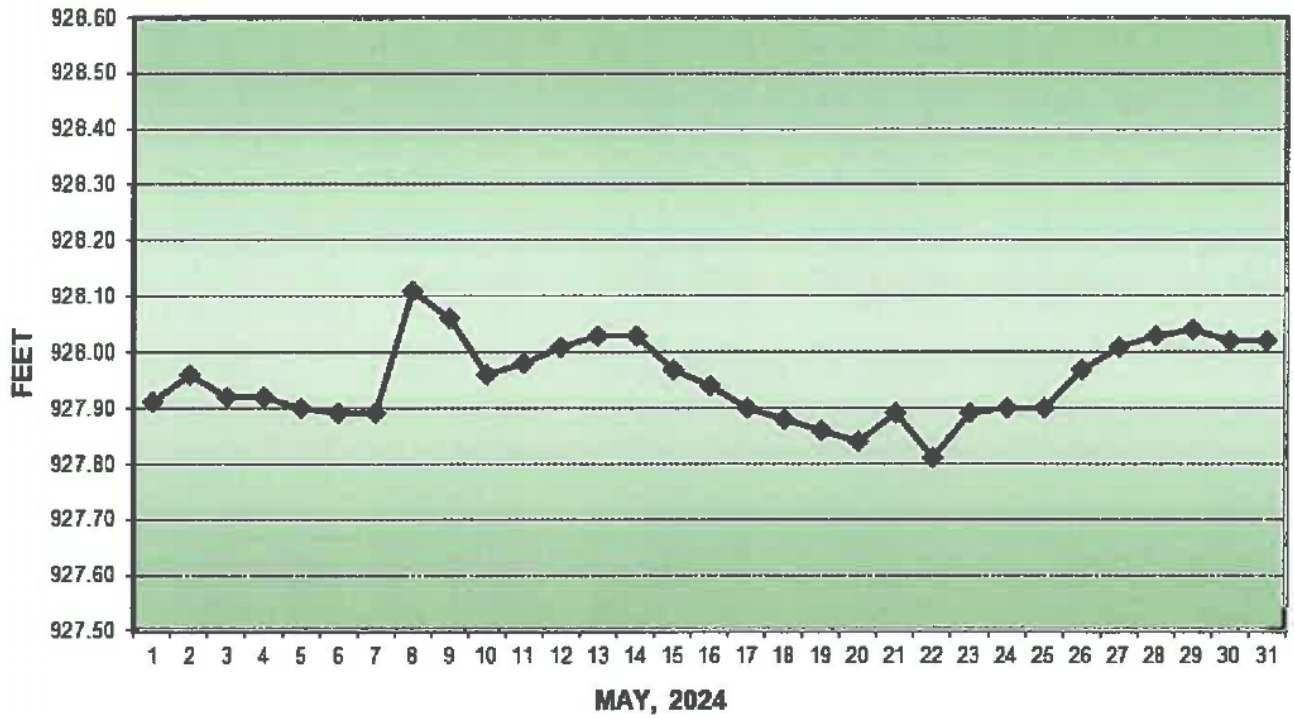
### PRECIPITATION - DELAVAN LAKE, WI



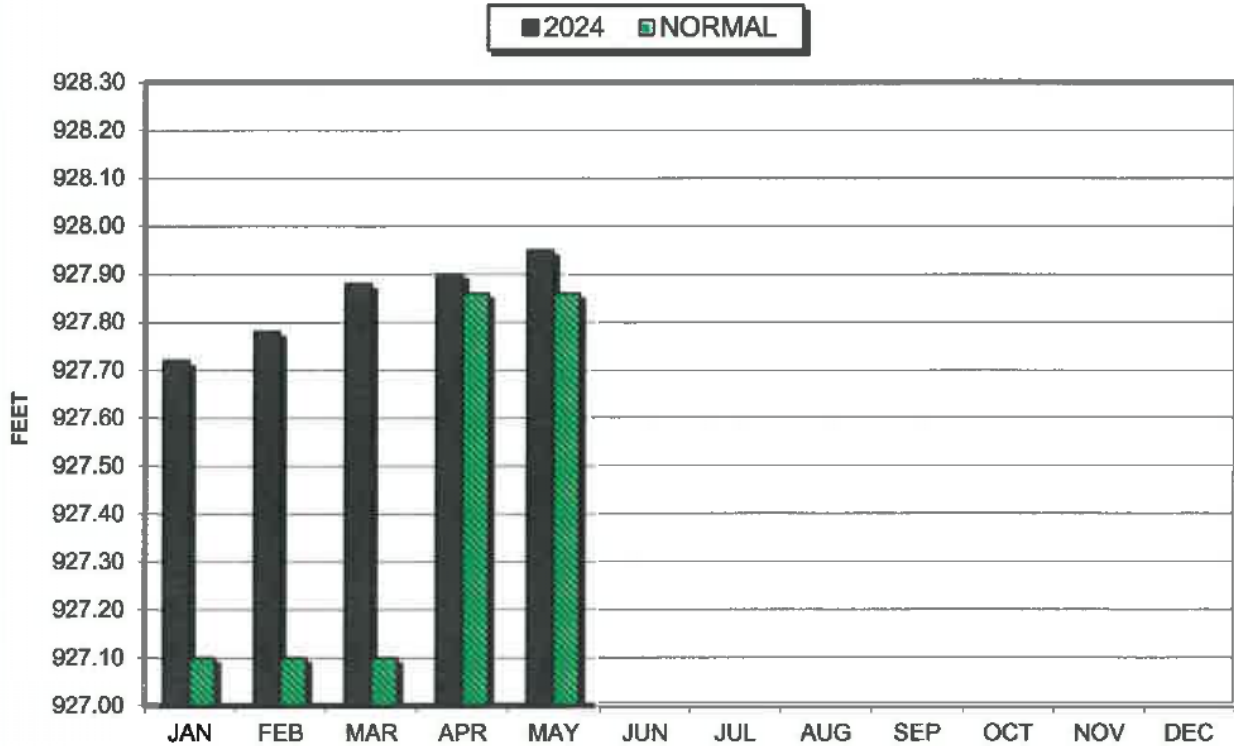
### AVERAGE WASTEWATER FLOWS



### LAKE ELEVATION - DELAVAN LAKE, WI



### AVERAGE LAKE ELEVATION - DELAVAN LAKE, WI



**DATA SUMMARY  
DELAVAN LAKE, WISCONSIN**

Month	Ice On Date	Ice Off Date	Air Temperature			Precipitation		Lake Water Temp.	Average Lake Elevation	Secchi Disc		Cubic Yards Harvested	
			Max.	Min.	Mean	Month (In Inches)	Yr to Date (In Inches)			Average (In Feet)	Maximum (In Feet)	Month	YTD
<b>2022</b>													
JAN	1/10/22		40	-18	11	0.63	0.63	-	927.72	-	-	-	-
FEB			49	-3	23	0.77	1.40	-	927.70	-	-	-	-
MAR		3/23/22	73	6	34	2.91	4.31	-	927.80	-	-	-	-
APR			81	24	52	5.05	9.36	42	927.88	20.0	20.0	-	-
MAY			91	33	62	2.42	11.78	62	927.90	12.7	20.0	387	387
JUN			98	47	72	2.21	13.99	74	927.87	9.7	13.0	2184	2571
JUL			90	52	71	2.98	16.97	79	927.68	8.7	10.0	1431	4002
AUG			92	52	72	4.28	21.25	79	927.60	6.6	9.0	1585	5587
SEP			85	35	60	7.51	28.76	59	927.85	6.7	7.0	305	5892
OCT			78	29	54	1.67	30.43	-	927.79	-	-	39	5931
NOV			75	9	42	1.23	31.66	51	927.77	12.3	15.0	-	-
DEC	12/19/22		56	-13	22	1.67	33.33	-	927.72	-	-	-	-
<b>2023</b>													
JAN			49	-14	18	1.67	1.67	-	927.71	-	-	-	-
FEB			51	-7	22	4.14	5.81	-	927.78	-	-	-	-
MAR		3/10/23	69	9	39	2.89	8.70	-	927.81	-	-	-	-
APR			82	26	54	3.87	12.57	49	927.83	8.0	9.0	855	855
MAY			91	35	63	1.45	14.02	62	927.85	21.8	38.0	1553	2408
JUN			92	43	67	1.22	15.24	70	927.73	9.6	17.0	1558	3966
JUL			92	53	72	3.67	18.91	75	927.68	6.0	8.0	1620	5586
AUG			97	44	71	1.88	20.79	76	927.83	7.3	10.0	854	6440
SEP			93	42	68	3.78	24.57	68	927.75	8.7	12.0	146	6586
OCT			86	24	55	3.01	27.58	-	927.89	-	-	-	-
NOV			68	10	39	1.01	28.59	-	927.84	-	-	-	-
DEC			56	13	34	2.13	30.72	-	927.75	-	30.0	-	-
<b>2024</b>													
JAN	1/15/24		38	-16	11	2.36	2.36	-	927.72	-	-	-	-
FEB		2/27/24	74	10	42	0.44	2.80	-	927.78	-	-	-	-
MAR			72	22	47	5.31	8.11	-	927.88	-	-	-	-
APR			82	28	55	3.65	11.76	-	927.90	-	-	-	-
MAY			87	44	65	5.93	17.69	67	927.95	18.2	28.0	466	466