

**DELANVAN LAKE SANITARY DISTRICT
ADMINISTRATOR'S REPORT
OCTOBER ACTIVITY 2024**

ADMINISTRATION

Villa Clare Development Sanitary Sewer review is in progress.

Lift Station #2A contractor in progress with the wet-well getting set first.

Shores of Delavan moving strong.

Ravenswood repaving project set for October, crews are repairing manholes prior to asphalt.

Walworth County placed LS #2A and LS #5 into board of appeals as they object to the repairs and improvements being done.

Weed harvesting crews are headed back to college and a small staff will continue to cut into October before pulling the last of the equipment.

SEWER SYSTEM OPERATIONS

Building Sewer Connections

New Connections for the Month - 1

Reconnections for the Month - 0

Disconnections for the Month - 0

Total Number of Structures Connected to Date - 3,140

Total ERU Count for the Month - 4,060

Operation and Maintenance

Average October Daily Wastewater Flow to WalCoMet - 490,979 gallons

Peak October Flow - 540,356 gallons

Diggers Requests Marked for the Month - 97

Emergency Call Outs - 1

Lateral Leaks

Sump Pump Discharges - 4

Current Lateral Leaks - 51

Completed Lateral Leak Orders - 5

The following charts are attached: *Wastewater Flow comparison with Precipitation October, 2024*
Average Daily Wastewater Flow comparison with Peak Flow
Precipitation comparison with "normal"
Wastewater Flow comparison with "normal"
Environmental Data Summary
Daily Lake Elevation for October, 2024
Lake Elevation comparison with "normal"

Lake Monitoring/Lake Level

Precipitation Total for the Month – 0.60 inches
Below Normal – 1.74 inches
Ice On Date – January 15, 2024
Ice Off Date – February 27, 2024

Secchi Disc Reading Main Lake – 12.0 feet 10/10/2024

See attached Lake Elevation Graph and Chart.

Lake Information

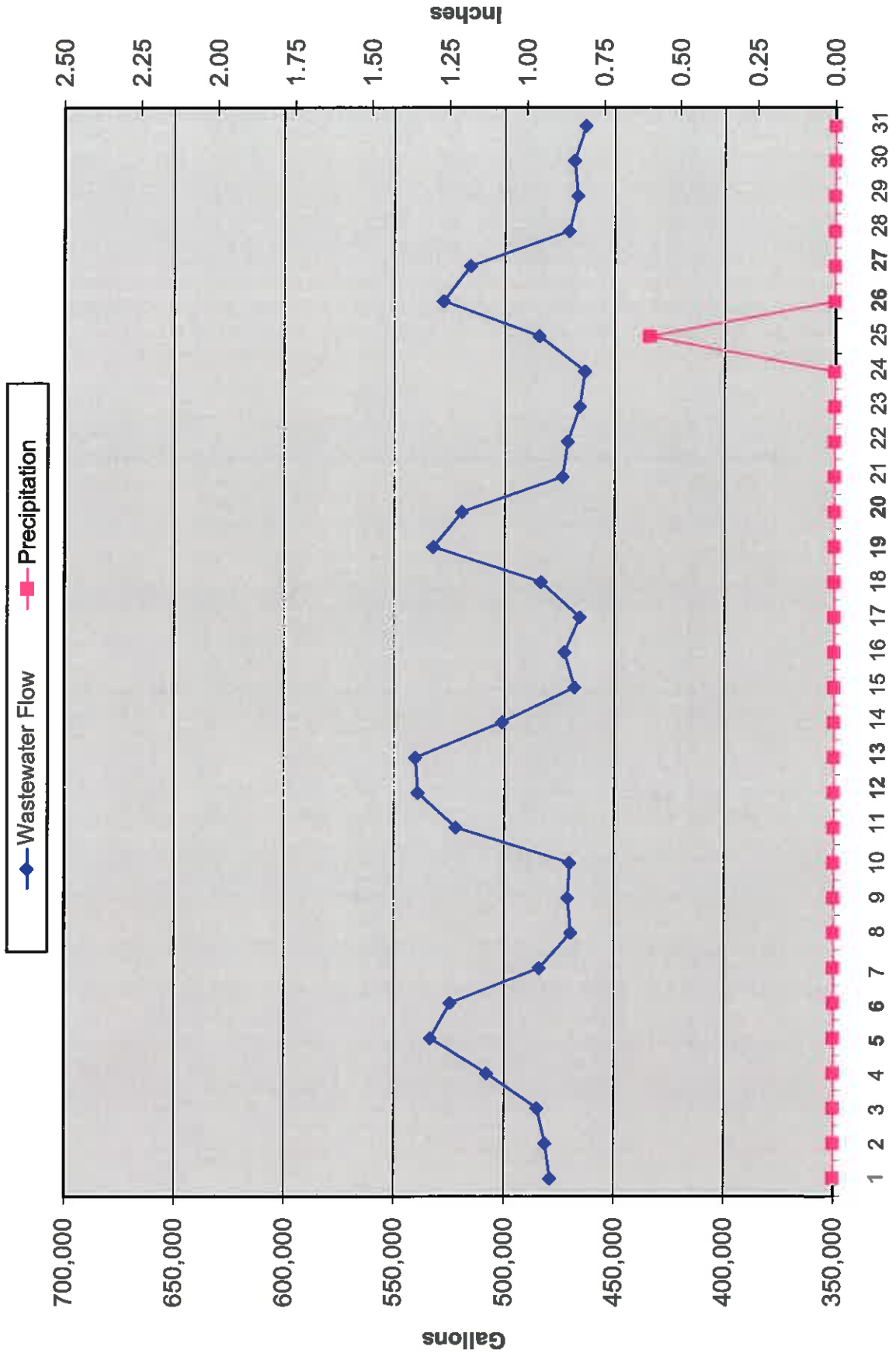
DNR Lake Level Goal – 927.86 feet
Average Lake Elevation – 927.74 feet

Lake Committee

The next meeting of the Lake Committee is scheduled for 7:00 P.M. on Wednesday, December 4, 2024 at the Town Hall.

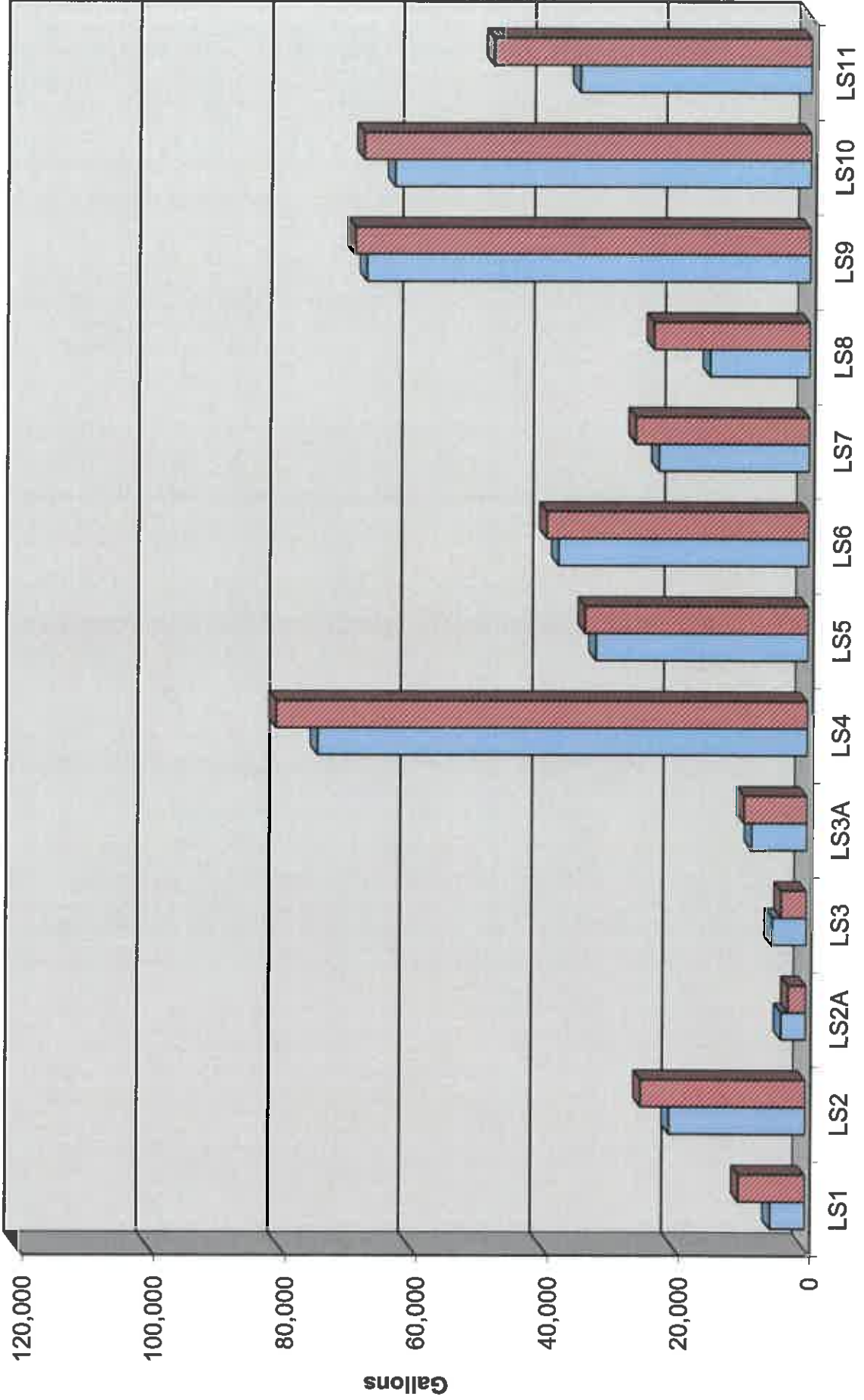
Attachments

Wastewater Flow/Precipitation - October, 2024

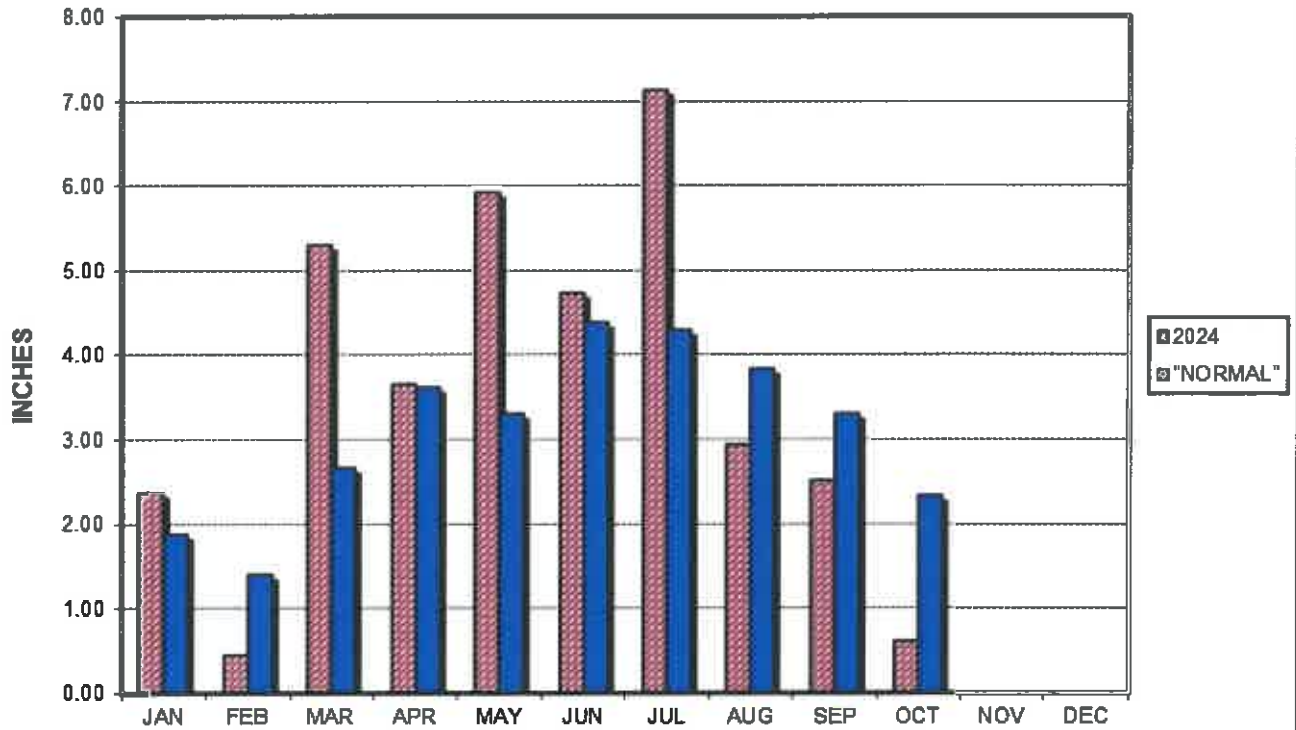


Average Daily Flow/Peak Flow by Area - October, 2024

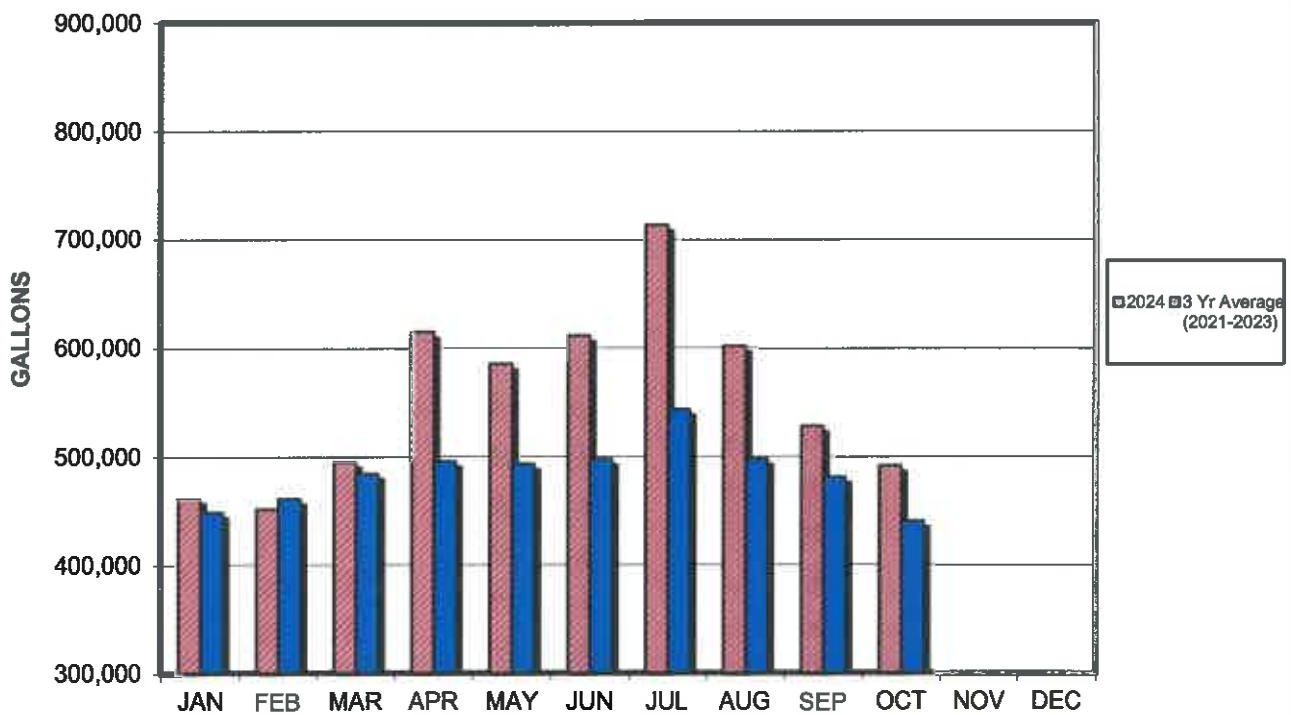
□ Average ■ Peak



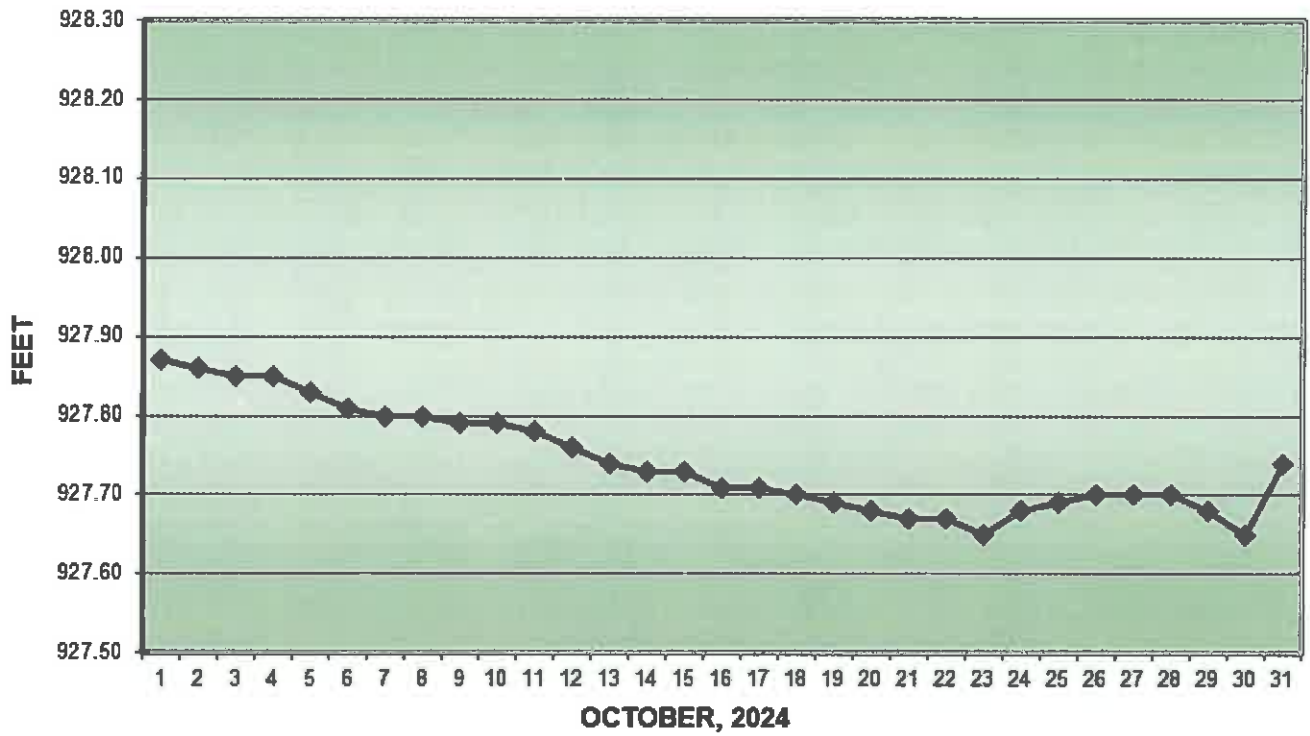
PRECIPITATION - DELAVAN LAKE, WI



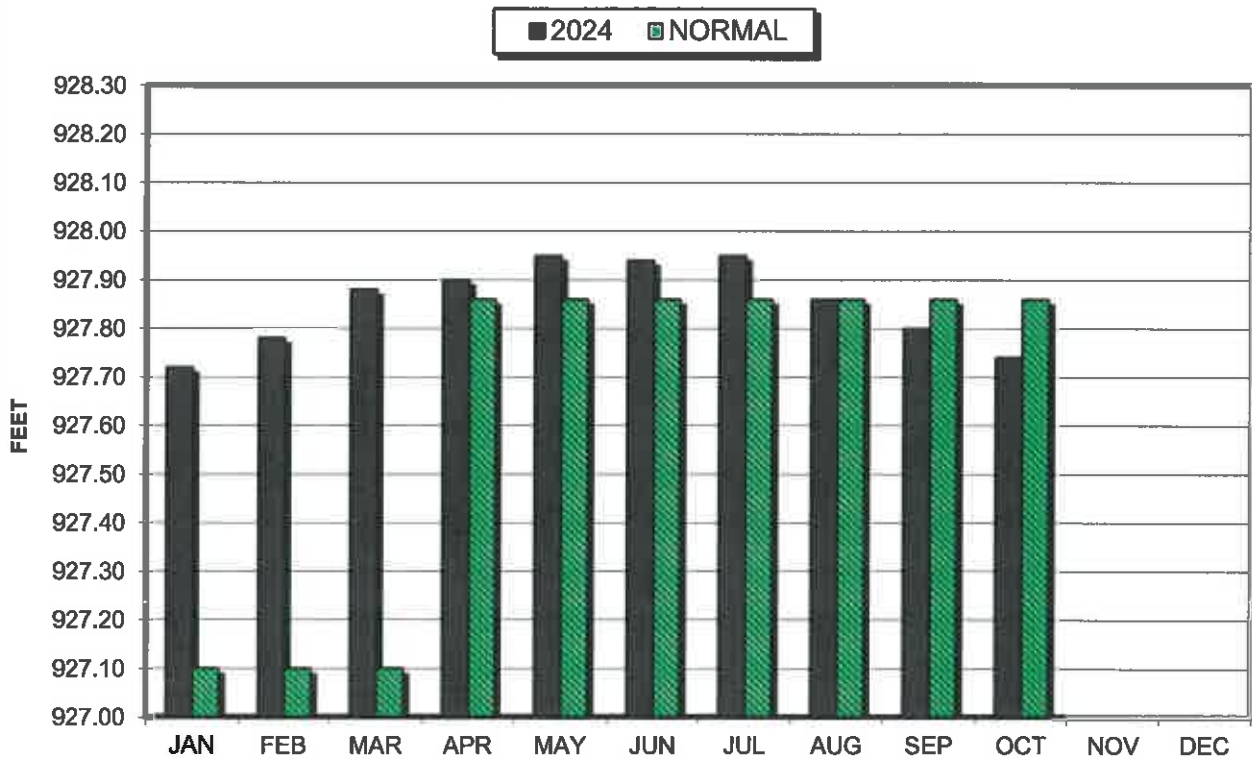
AVERAGE WASTEWATER FLOWS



LAKE ELEVATION - DELAVAN LAKE, WI



AVERAGE LAKE ELEVATION - DELAVAN LAKE, WI



**DATA SUMMARY
DELANAVN LAKE, WISCONSIN**

Month	Ice On Date	Ice Off Date	Air Temperature			Precipitation		Lake Water Temp.	Average Lake Elevation	Secchi Disc		Cubic Yards Harvested	
			Max.	Min.	Mean	Month (In Inches)	Yr to Date (In Inches)			Average (In Feet)	Maximum (In Feet)	Month	YTD
2022													
JAN	1/10/22		40	-18	11	0.63	0.63	-	927.72	-	-	-	-
FEB			49	-3	23	0.77	1.40	-	927.70	-	-	-	-
MAR		3/23/22	73	6	34	2.91	4.31	-	927.80	-	-	-	-
APR			81	24	52	5.05	9.36	42	927.88	20.0	20.0	387	387
MAY			91	33	62	2.42	11.78	62	927.90	12.7	20.0	2184	2571
JUN			98	47	72	2.21	13.99	74	927.87	9.7	13.0	1431	4002
JUL			90	52	71	2.98	16.97	79	927.68	8.7	10.0	1585	5587
AUG			92	52	72	4.28	21.25	79	927.60	6.6	9.0	305	5892
SEP			85	35	60	7.51	28.76	59	927.85	6.7	7.0	39	5931
OCT			78	29	54	1.67	30.43	-	927.79	-	-	-	-
NOV			75	9	42	1.23	31.66	51	927.77	12.3	15.0	-	-
DEC	12/19/22		56	-13	22	1.67	33.33	-	927.72	-	-	-	-
2023													
JAN			49	-14	18	1.67	1.67	-	927.71	-	-	-	-
FEB			51	-7	22	4.14	5.81	-	927.78	-	-	-	-
MAR		3/10/23	69	9	39	2.89	8.70	-	927.81	-	-	-	-
APR			82	26	54	3.87	12.57	49	927.83	8.0	9.0	855	855
MAY			91	35	63	1.45	14.02	62	927.85	21.8	38.0	1553	2408
JUN			92	43	67	1.22	15.24	70	927.73	9.6	17.0	1558	3966
JUL			92	53	72	3.67	18.91	75	927.68	6.0	8.0	1620	5586
AUG			97	44	71	1.88	20.79	76	927.83	7.3	10.0	854	6440
SEP			93	42	68	3.78	24.57	68	927.75	8.7	12.0	146	6586
OCT			86	24	55	3.01	27.58	-	927.89	-	-	-	-
NOV			68	10	39	1.01	28.59	-	927.84	-	-	-	-
DEC			56	13	34	2.13	30.72	-	927.75	-	30.0	-	-
2024													
JAN	1/15/24		38	-16	11	2.36	2.36	-	927.72	-	-	-	-
FEB		2/27/24	74	10	42	0.44	2.80	-	927.78	-	-	-	-
MAR			72	22	47	5.31	8.11	-	927.88	-	-	-	-
APR			82	28	55	3.65	11.76	-	927.90	-	-	-	-
MAY			87	44	65	5.93	17.69	67	927.95	18.2	28.0	466	466
JUN			94	47	70	4.73	22.42	71	927.94	7.6	15.0	1476	1942
JUL			91	50	71	7.14	29.56	84	927.95	6.0	6.0	2035	3977
AUG			95	48	71	2.93	32.49	75	927.86	7.0	7.0	1692	5669
SEP			91	42	66	2.51	35.00	77	927.80	8.8	10.0	1769	7438
OCT			84	32	58	0.60	35.60	66	927.74	7.3	12.0	590	8028